

GREENWAYS

Newsletter of
Delaware & Raritan Greenway, Inc.
Volume 5, Number 1
Winter 1997

In Perpetuity

Gateway to the Hamilton/Trenton Marsh Roebling Park is Rejuvenated

Once the site of a thriving amusement park, the John A. Roebling Memorial Park is now a nature reserve where people come to enjoy the wild side of the natural world and perhaps, lose a little of themselves at the same time. Amble along the shore trail around Spring Lake and you are likely to see a diverse population of songbirds, herons, ducks, and other waterfowl. Depending on the season, tracks of deer and evidence of turtle nests are mapped out in the trails. The observant eye will also gather evidence of beavers gnawing and lumbering food and a home in the surrounding marshlands. In spring, summer and fall, turtles bask in the warm sunshine and wildflowers bloom in a seasonal succession of color and beauty, attracting a diverse population of insects, birds and other wildlife. The park thrives as a dynamic wild natural area.

These lands claim a rich human history as well. The park is part of the Abbott Farm National Historic Landmark where Native Americans once thrived. Artifacts dating back more than 6,000 years have been found here. The Watson House, the oldest standing house in Mercer County today is also located at Roebling Park. Built in 1708, it has been restored and serves as the state headquarters for the Daughters of American Revolution.

In the late 1800's, man-made dikes contained the gurgling water from the natural springs and created the lake now known as Spring Lake, as part of the White City Amusement Park.

People from throughout the region visited this popular attraction. The remains of the ornate steps that linked the trolley at the top of the bluffs to the park below, and a concrete slide used for one of the first water rides—a chute-the-chute—are still visible today.

At one time a series of catwalks, constructed to service the power lines that stretch across the marshlands, provided access to the area. Time and the weather have claimed them and visitors to the park must now confine their rambles to more firm ground. Even so there are more than two miles of trails to explore.

Last year, D&R Greenway and the marsh task forces, in partnership with Hamilton Township, Mercer County, and Public Service Electric and Gas Company, spearheaded a project to rejuvenate and enhance the Mercer County-owned park. Deeded to the county by the Broad Street Civic Association in 1958 as a natural wildlife area, the park provides the only public access to the marsh in Mercer County. Most of the outdoor school programs and public events D&R Greenway sponsors at the marsh are held at Roebling Park.

The Roebling Park Enhancement Project grew out of the goal planning process the marsh task forces for Public Access and Recreation, Protection of

Continued on page 5

Inside

- Annual Report
- Trustees Named
- Appointments Announced
- Upcoming Events

Greenway Receives Grant

The J. Seward Johnson, Sr. Charitable Trusts have awarded D&R Greenway a grant of \$45,000 to support our land conservation programs including land preservation and management and public events. A portion of the grant, \$25,000, is earmarked for the Hamilton/Trenton Marsh Project and helps meet the challenge set forth by The William Penn Foundation. These funds support the development of a coordinated management plan and expanded educational program at the marsh.

Calling All Volunteers

We are seeking volunteers to help with our spring events: the Hamilton/Trenton Marsh Trash Stash, the Earth Day Planting Celebration, Marsh Madness (before and on the day of the event), and National Trails Day. (See story on page 4) Call Dani-Ella Betz at 609/924-4646 and let us know where you are willing to help.

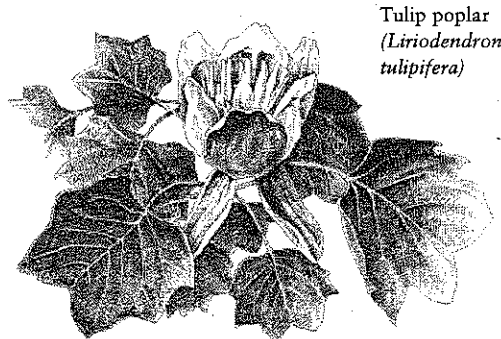
Thanks for your participation, enthusiasm and support!

Institute Lands Update

D&R Greenway and the Institute Lands Preservation Committee made another significant step toward our goal of protecting the Institute Lands through the purchase of a conservation easement when, in January, the Mercer County Freeholders approved a \$2.6 million contribution to repay the Green Acres loan to Princeton Township.

Wish List

Book shelves, file cabinets, slide projector, computer stand, laser printer, binoculars. ☛



Tulip poplar
(*Liriodendron tulipifera*)

Common Ground

1996 Highlights

BY PEGGY MCNUTT

The past year was fast-paced, exciting and successful for D&R Greenway. We preserved nearly 450 acres of sensitive lands throughout the greenway. Since its inception D&R Greenway has preserved 1,512 acres and generated, through public and private contributions more than \$34 million for land preservation. The Hamilton/Trenton Marsh project continued to flourish with new programs, the enhancement of Roebing Park, a community celebration day and the Trash Stash. D&R Greenway and the Institute Lands Preservation Committee worked hard to raise the necessary funds to purchase the conservation easement and was very close to its goal by year end. Our art exhibition, *Delaware & Raritan Greenway:*

Reflections Along the Canal, was shown in two locations and seen by thousands of people. Membership continued to increase and additional staff was hired to enable us to service the increased demand for programs and land management.

Land Preservation

Our land preservation projects continue to grow with the addition of five properties totaling 438 acres throughout the watershed. The acquired lands include properties in the Hamilton/Trenton Marsh and along the Bedens Brook and two sections of the Stony Brook. Three of the acquisitions added over 100 acres to the Northern Stony Brook Greenway. The preservation of the 178-acre Ingersoll Rand property

involved the cooperation of D&R Greenway, Montgomery Township, Rocky Hill, the State Green Acres program and Somerset County. We also continued our landowner outreach program and are discussing land preservation with several interested landowners. To support additional efforts, D&R Greenway received approvals from NJ Governor Whitman for six Green Acres projects totaling \$2.5 million.

The preservation of the 589 acres of farmlands and woodlands owned by the Institute for Advanced Study continued to be a priority again this year. The Institute Lands Preservation Committee spent much of the year fundraising for the project in order to complete the deal by year end. Generous support was received from the community, businesses and foundations and the fund raising efforts were very successful. The Institute Lands Preservation Committee raised more than two million dollars toward the project. The deadline was extended to the end of

Continued on facing page

New Trustees and Officers Named

The board of trustees of Delaware & Raritan Greenway recently appointed two new members to the board—Dr. Mary Alessio Leck and Paul Rubincam. Cathleen Litvack of Princeton was re-elected as chair. Hella McVay of Princeton was elected as vice chair. Also re-elected as vice-chairs were, Edmund T. Stiles of Hopewell, and William Swain, Jr. of



Mary Alessio Leck

Princeton. Alan Hershey of Pennington was re-elected treasurer.

Dr. Mary Alessio Leck is a professor of biology at Rider University. She has been conducting research in plant ecology at the Hamilton/Trenton Marsh since 1978. Currently she is studying plant colonization at the newly constructed wetlands on Duck Island. Mary has led programs for D&R Greenway for several years. She has also served on the Board's Marsh Committee and the Marsh Education Task Force.

Mary has been a trustee of the Stony Brook Millstone Watershed Association for four years and chairs their Education Committee. She will also become president of the Torrey Botanical Society in March.

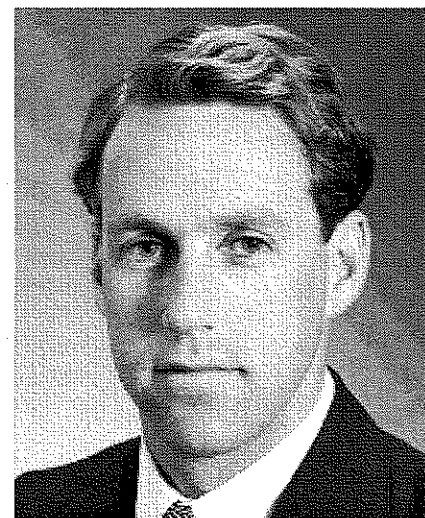
Mary earned an undergraduate degree from the University of Massachusetts, Amherst, and graduate degrees from the University of Colorado. She lives in Kendall Park.

Paul Rubincam is vice president of leasing for Matrix Development Group where he is responsible for directing all commercial and industrial leasing and sales efforts. Paul has

extensive experience in development, construction management, market analysis, and property acquisition. As a partner in one of the regions premier real estate development firms, Paul is acutely aware of the need for development balance and intelligent growth.

In addition to serving on D&R Greenway's board, he is a volunteer with the American Cancer Society and the March of Dimes.

Paul holds a BA in Economics from the University of Pennsylvania. He lives in Princeton.



Paul Rubincam

Greenway Announces Appointments

Delaware & Raritan Greenway announces two new appointments. Patricia B. Shapella has been named development director and Patricia Orban Quinby has been promoted to director of public outreach for the regional land conservancy.

These new positions were created through a recent organizational restructuring. In announcing the appointments, executive director, Peggy McNutt explains, "D&R Greenway's mission is to preserve land along stream corridors throughout the 400 square mile watershed of the D&R Canal in central New Jersey. To date, we have preserved more than 1,500 acres. The Board of Directors recognizes that, in addition to being successful in preserving land, we need also to develop a strong public outreach effort and diverse funding base. With these appointments we are looking to expand our



Patricia Orban Quinby

efforts in these areas and strengthen our organization."

Shapella comes to D&R Greenway after three years as development officer for the Shoestring Players, a performing arts/arts education group in New Brunswick, NJ, where she did extensive research and proposal writing for foundation and corporate support, organized fund raising events and worked closely with the Board of Trustees to meet fund raising goals.

Shapella also counts to her credit eight years as a field sales representative for a natural products broker. "It was an excellent training ground for fund raising work," she explained, "and my customers made me very conscious of our stewardship role on the earth."

An outdoor enthusiast and avid gardener, Shapella is delighted to be working for D&R Greenway. "As a resident of the Delaware Valley for 11 years, I am pleased to be part of



Patricia B. Shapella

Highlights

Continued from previous page

January so Mercer County freeholders could approve their participation in the repayment of the Green Acres loan. D&R Greenway continued to serve as the administrator of the project and worked closely with Florence Kahn, the fundraising director. We also worked with the

Institute for Advanced Study, Princeton Township, Mercer County and the State Green Acres program to formulate the conservation easement for the 589 acres.

D&R Greenway's GIS mapping capabilities continued to grow with the receipt of a grant from The Conservation Fund's DuPont American Greenways program to purchase digitized aerial photographs. D&R Greenway has been using the GIS

the effort to preserve the natural beauty of this area."

Shapella received a BA from Memphis State University.

Quinby has directed D&R Greenway's widely recognized Hamilton/Trenton Marsh project for the past three years. During that time she developed and implemented an intensive outreach program to promote and enhance the marsh and lay the ground work to permanently protect and preserve it as a nature reserve. Nearly 8,500 residents, students and visitors have participated in D&R Greenway's very popular series of nature walks, historical talks and tours, canoe trips, workshops and school programs. Quinby also serves as editor of the organization's newsletter, *Greenways*.

Prior to joining Greenway, Quinby spearheaded an adult and industry education program and county-wide PA youth apprenticeship program in Bucks County and was an independent consultant in management and leadership development. In addition to volunteering with Bucks County Audubon, she has served on the board of the Central Bucks Chamber of Commerce, and A Woman's Place, a shelter for abused women and children.

She sees her new role with Greenway as an extension of her work with the marsh.

"Greenway's work is important to our times and to our area. If we don't preserve the land now, we may lose the opportunity forever. It's the land and nature that I love, that I draw nourishment from—for my writing, my photography, my art, my life. I want to inspire others to appreciate the land in the same way."

Quinby earned a BA from East Stroudsburg University and an MBA from Lehigh University.

maps to evaluate acquisition projects and assist with the management and monitoring of preserved properties.

We continue to work with other local land conservation groups. This year we assisted in the creation of the Hunterdon Land Trust Alliance. Gordon Smith, a Greenway trustee and Peggy McNutt, executive director, were elected as trustees of the

Continued on page 6

Upcoming Special Events

D&R Greenway is sponsoring several special community events this spring. We invite you to join the fun, enjoy the great outdoors, and help celebrate and support our land preservation programs!

Second Annual Marsh Trash Stash

Saturday, March 22, 9:00 a.m. – noon (Rain date: March 23)

Join us and help make the world more beautiful! Last year nearly 200 volunteers participated and made a tremendous impact. They removed an estimated 14 tons of trash from the environment—making the marsh a nicer place for wildlife and people! You can help make a difference! Groups and individuals are welcome; there's room for all! Call the hotline at 609/452-0525 to register yourself or your group today!

Earth Day Planting Celebration

Saturday, April 19, 9:00 a.m. – noon (Rain date: April 20)

Roll up your sleeves, get down and dirty and plant to have a great

time! Join D&R Greenway, the Stony Brook Garden Club and area school children in planting native wildflowers and grasses at Roebbling Park at the marsh. It's a great way to celebrate Earth Day and Spring. Call the hotline at 609/452-0525 to register today!

Donald B. Jones Conservation Award Reception

Sunday, May 4, 4:00 – 6:00 p.m.

Join D&R Greenway as we present our third annual Donald B. Jones Conservation Award. This year, we will honor Wendy Mager and the Friends of Princeton Open Space for their efforts to preserve Mountain Lakes, the Woodfield Reservation and the Institute Lands. The event will be held at the gallery in Summit Bank, Carnegie Center, Route 1 where the renowned artist Tom George will exhibit a collection of pastels, paintings and drawings of the Institute Lands and other open spaces. At the reception, Mr. George will discuss how the natural beauty of these lands inspired his art. Plan to join the celebration! Invitations

will be mailed to all members in early April.

Hamilton/Trenton Marsh Madness

May 17, 1997 8:30 a.m. – 12:30 p.m. (Rain date: May 18)

This event offers something fun for everyone! Bring the family to the Spring Lake area of the John A. Roebbling Memorial Park and enjoy nature walks, wagon rides, exhibits and other activities. Learn how the Native Americans who lived at the marsh made their tools of bone and stone. The Mercer County Wildlife Center will also provide the chance to meet several wild hawks and owls up-close and personal. At 10:30 we will dedicate the plantings, signs and other enhancements made to Roebbling Park during the last year. (See article on page one). Admission is \$3 per person for Greenway members, (\$10 per family); \$5 per person for non-members, (\$15 per family). No need to pre-register—just come out and enjoy these wild wonderful woodlands and wetlands! ♣

Marsh Musings

Thousands of students have visited the marsh in the past three years. We've enjoyed the many letters and drawings of thanks we have received. Through their comments we gain a fresh perspective every day.

"Thank you for guiding us. We saw four snakes, a great blue heron, and a frog. The mud was yucky, but I could stand it."

"Thank you for letting us come to the marsh. It was really cool that the Native Americans lived there. Was Pocohontas one of them?"

"Thank you for the great walk. I am going to bring my mom and my dad. I bet they are going to enjoy it."

"The marsh was a lot of fun. We were hot, wet and tired when all of us were done, but that would never stop us from doing it again. The coolest thing that we saw was the beaver dam and lodge."

And from a teacher:

"That was the most fun and educational field trip I've taken the kids on in three years. We were fortunate to have discovered you and the marsh."

Join the fun and schedule a trip to the marsh. Discover the magic and mysteries for yourself! ♣

In Perpetuity

Continued from page 1

Resources, and Education and Public Outreach undertook in the fall of 1995. While each of the three task forces had its own focus, because of Roebbling Park's focal role as a public access point to the marsh, all three identified priority goals that would enhance and protect Roebbling Park.

The enhancement of Roebbling Park facilitates public access to the marsh and helps to protect the tremendous natural and historical resources the marsh harbors. It also enables visitors to better appreciate, understand and enjoy the abundant educational and recreational opportunities available to them.

Hamilton Township Mayor Jack Rafferty summed it up well for many task force members and partners when he said, "Roebbling Park is one of the finest natural resources in Mercer County and maybe the State of New Jersey. We are more than pleased to be a partner with the county in the rehabilitation of Roebbling Park, the benefits of which, inure to all residents."

In early 1996, D&R Greenway worked with Hamilton Township to develop the plans for the enhancements based on the goals established by the task forces and submitted a grant application to MSM (Mercer, Somerset, Middlesex Regional Council) for a Mercer County Green Links Project. We received a grant for \$10,000 and the work began shortly thereafter.

PSE&G designed and built attractive gates, and together with Suburban Fence Company of Trenton, installed them at the Sewell Avenue and Watson House entrances to Roebbling Park. A third gate was installed in an area by Spring Lake that had been damaged by inappropriate vehicular use over the years. This area was restored to create a more attractive natural and interpretive area and will serve as an educational display for students and the general public visiting the marsh.

Two trails were developed in this area—one a 4-foot wide walking path along Spring Lake, the second an 8-foot wide path that follows the shore of the north marsh providing access to future lookout stations and allowing for access by maintenance vehicles. Hamilton Township donated and hauled fill and landscaping rocks.



New trails and an interpretive display of native plantings were installed along Spring Lake in Roebbling Park.

Mercer County Parks and a hired excavator, Ace Excavating of Lawrenceville, graded the trail around the lake and an area between the two trails, to create an island of native plantings for an interpretive and educational display. The Whole Earth Center of Princeton purchased \$1,000 in plantings for the project. The balance of the plantings were purchased with the remaining Green Links grant money and a total of nearly 90 native trees and shrubs were supplied and planted by Doerler Landscaping of Crosswicks.

In addition, Hamilton Township built an attractive bridge over the spillway to complete the trail around the lake and added a concrete flooring to lessen maintenance requirements on the bridge leading to the woodland trails.

In the spring, four benches donated by Marturano Recreation Co., Inc. of Brick Town, NJ will be placed to provide seating along the lake and trails, and interpretive, access, and other park signs will be installed. The plantings will also be labeled to enable visitors to identify the species in the display area as well as the same species found along the trails in the woods and the marsh shore.

Several community groups are also involved in the project. The Stony Brook Garden Club is coordinating the efforts of several garden clubs who are participating in the design and planting of native wildflowers. Together with D&R Greenway, the garden club will also

be conducting outreach into area schools where students will participate in growing and planting native flowers. A special 'planting day' will be held on April 19 to celebrate Earth Day and plant the wildflowers.

A group of students from Granville Academy is designing and installing a butterfly garden. A local scout, Rob Markley, has nearly completed his Eagle Scout project to build and install nest boxes for tree swallows, screech owls and American kestrels in the area.

Donations have been received from individuals to purchase trees in honor or memory of friends and family members. We are extending this opportunity to individuals and groups from the community. If you would like more information, call Patti Quinby at 609/924-4646.

The project has been a tremendous success and has made a very positive impact on the park and the Hamilton/Trenton Marsh. The Roebbling Park Enhancements will be dedicated at a special ceremony during *Marsh Madness: A Community Celebration*, on May 17 at 10:30 a.m.

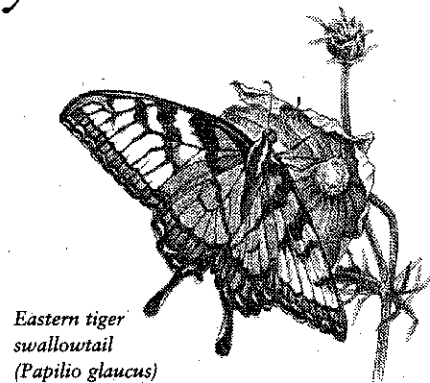
D&R Greenway is grateful for the commitment of our partners and their generous contributions toward this project. We are also delighted with the results and think you will be too. Plan a visit to the park this spring, join us at Marsh Madness and the dedication and enjoy the fruits of our labor and the improvements to your park! ♣

Granville Academy Students Explore Marsh

D&R Greenway has teamed up with American Re-Insurance Company, Building Environmental Education Solutions, Inc. (BEES), and Granville Academy to offer a year-long program about the Hamilton/Trenton Marsh. During the year, thirty-five tenth grade students from high schools throughout the area will explore various aspects of the marsh.

Using the BEES model and a hands-on approach, the students will learn more about the diverse habitat and wildlife at the marsh, its rich human history and the issues stakeholders of the marsh face today. The students will also explore a variety of water issues including the value and protection of wetlands, water treatment, health implications and pollution prevention measures.

Student teams have also taken on



Eastern tiger swallowtail
(*Papilio glaucus*)

projects that complement D&R Greenway's programs to protect and preserve these valuable wetlands. Student projects include developing a butterfly garden with native species at Roebbling Park, developing and mapping trails, providing nest boxes, storm drain stenciling, researching and developing the oral history of local residents, water monitoring, and researching and writing for marsh publications. ♣

Highlights

Continued from page 3

new group. Another Greenway trustee, Neil Upmeyer, was named as an advisor.

Land Management

The first annual Marsh Trash Stash was held in March with nearly 200 volunteers helping to remove an estimated 14 tons of debris including more than 300 tires from the marsh. D&R Greenway led a major enhancement project at John A. Roebling Park, the only public access to the Marsh in Mercer County and the location of most of our education and outreach programs. The enhancements were funded by cash grants of \$11,000 and in-kind gifts of nearly \$60,000 contributed by

partners including Hamilton Township, PSE&G, Mercer County and others. Attractive entrance gates were installed and a large area damaged by inappropriate vehicular use over the years was restored to create a more attractive natural and interpretive area. Two trails were developed and an island of native plantings including nearly ninety trees and shrubs, was installed in an interpretive and educational display. In addition, a bridge was installed over the spillway to complete the trail around Spring Lake and the bridge leading to the woodland trails was enhanced to lessen maintenance requirements. Project partners have also committed resources to maintain the enhancements as needed.

On National Trails Day in June, a new trail was created at McBurney Woods Preserve as part of the North-

ern Stony Brook Greenway. The Land Management Committee extended the native hardwood regeneration project to two other properties along the Stony Brook this year. More than 80 additional saplings were "tubed" to protect them from deer predation. We also worked with the D&R Canal State Park, the Department of Environmental Protection and Bristol-Myers Squibb to enhance the canal park facilities.

Public Outreach

This year D&R Greenway continued to sponsor events related to the 'Art and the Environment' theme through the development of an art exhibition, "Reflections Along the Canal: Delaware & Raritan

Continued on facing page

Greenway." The exhibition opened at The Gallery at Bristol-Myers Squibb in July and at Prallsville Mills in October. Featured in the exhibition were en-plein air paintings by Dorothy Bissell, Sylvia Cummings Kokatnur, Lucy Graves McVicker and photography by Clem Fiori, illustrating the beauty of the Delaware & Raritan Canal Greenway. Through the art exhibition the four artists and D&R Greenway highlighted the natural connection between art and the environment with the goal of fostering an appreciation of, and desire to protect, our sensitive lands in central New Jersey. A portion of the proceeds from the sale of the art works benefitted D&R Greenway's land preservation projects. More than 3,000 attended the two exhibitions.

D&R Greenway sponsored nearly one hundred events involving more than 4,600 participants and more than 1,600 people attended slide presentations about D&R Greenway programs.

Interest in, and support of, the marsh continued to build as D&R Greenway promoted this tremendous resource through our public outreach and education programs. More than 4,500 people attended the ninety-three events including nature walks, historical talks and tours, canoe trips, workshops, and outdoor classroom activities we presented at the marsh. We reached nearly 1,000 school students (K-12) through slide presentations and provided outdoor classroom presentations and a walking tour of the marsh to nearly 1,400 students from area schools. The Marsh Hotline, received more than 600 calls.

D&R Greenway also helped plan and made a presentation at the State's first Land Trust Rally held in December. The rally was very successful with participants attending throughout the State.

Development

In March, we hosted an evening of folk music which began as a benefit concert and turned into an event in memory of one of our employees, Lee Tetzeli who died in a car accident in late 1995. Lee had been developing and planning the event as part of her work. It was a wonderful tribute to this special woman.

In May, we again honored the memory of Donald B. Jones with a

walk and award reception. Mary Tanner of Lawrence Township was presented the Donald B. Jones Conservation Award for her years of activism in preserving open space in the region.

D&R Greenway and a private landowner also hosted a walk and reception at the landowner's home along the Stony Brook to introduce neighbors and friends to the Stony Brook Greenway and D&R Greenway's land preservation efforts. More than forty people attended the party and experienced first hand, the benefits of our preservation work.

We also continued to broaden our fundraising efforts. Our membership continued to grow as a result and now totals 584. In addition to support from individuals, we received funding from foundations, corporations, governments and other nonprofits to continue our preservation activities.

Administrative

To meet the increased demand for programs, D&R Greenway hired Dani-Ella Betz as the full-time program coordinator for the Hamilton/Trenton Marsh. In October, Jo Ann West joined the staff as an assistant for land management and events. We continued to have the pleasure of Peg Benton serving as an office volunteer for the Hamilton/Trenton Marsh project.

Future Plans

The D&R Greenway Board of Trustees formed a planning committee this year to review organizational needs with the immediate focus on personnel policies. The Committee recommended, and the Board approved, a reorganization that integrates the Hamilton/Trenton Marsh more fully into the organization. Through the reorganization, Patti Quinby became director of public outreach and a full time development director was hired in early 1997 (see story on page 3). The Committee and the Board, in approving these personnel changes, affirmed land preservation as D&R Greenway's main function and viewed these organizational changes as supporting and furthering this mission.

You can make a difference— Join today!

Enclosed is my contribution to help D&R Greenway preserve vital stream corridors and wetlands throughout central New Jersey.

- \$2,500 Greenway Donor
- \$1,000 Headwater Donor
- \$500 Tributary Donor
- \$250 Woodland Donor
- \$150 Trail Donor
- \$100 Wildflower Donor
- \$50 Maple Leaf Donor
- \$40 Family Membership
- \$35 Individual Membership
- \$20 Senior Citizen/Student
- My company will match my gift. Enclosed is the matching gift form.

Also enclosed is a gift towards D&R Greenway's:

- Land Acquisition Fund \$ _____
- Land Management Fund \$ _____

I'd also like information about:

- preserving my stream corridor lands
- D&R Greenway footpaths
- Hamilton/Trenton Marsh
- volunteer opportunities



Name _____

Address _____

City/State/Zip _____

Tel (area code) _____

Please make check payable to D&R Greenway and mail to:

Delaware & Raritan Greenway, Inc.
570 Mercer Road, Princeton, NJ 08540

Gifts, Gifts, Gifts

Need a gift for yourself or another special person? You can purchase a variety of unique and attractive items and help to save open space and support environmental education programs in central New Jersey at the same time.

Notecards

Notecards feature artwork by Dorothy Bissell, Clem Fiori, Sylvia Cummings Kokatnur and Lucy Graves McVicker from our exhibit, *Reflections along the Canal: Delaware & Raritan Greenway*.

Set of 4 cards, \$6.00; set of 8, \$12.00.



NOTE CARD (left):
Summer on the Canal,
by Dorothy Bissell

POST CARD
(below left):
*The Hamilton/Trenton
Marsh*, by Patti Quinby

SHIRTS,
TOTE BAGS:
*Hamilton/Trenton
Marsh*



T-shirts, Sweat shirts, and Tote bags

These attractive T-shirts, sweat shirts and totes feature an original design created especially for the Hamilton/Trenton Marsh.

Adult T-shirt. Hanes Beefy-T. 100% cotton.
S, M, L, XL, XXL. \$15.00, two for \$25.00,
2 or more \$12.50 each.

Youth T-shirt. Hanes Beefy-T. 100% cotton.
L (14-16). \$12.00, two for \$20.00, 2 or more \$10.00 each.

Adult Sweat shirt. Russell Activewear. 50% cotton / 50% polyester. M, L, XL, XXL. \$22.00.

Tote bag. Cotton canvas. \$12.00.

Post Cards

Six different cards featuring the Marsh are available;
\$.25 each, 5 for \$1.00.

Item / size	Quantity	Amount
_____	_____	_____
_____	_____	_____
_____	_____	_____
_____	_____	_____
Merchandise total \$		_____
Shipping & Handling (\$4.00 per address) \$		_____
Total enclosed \$		_____

Name _____

Address _____

City, State, Zip _____

Telephone _____

Items can also be picked up at D&R Greenway's office. Please be sure to call ahead so we can pull your order together and save you a return trip.

D&R Greenway, Inc. Board of Trustees

Cathleen R. Litvack
Chair

Hella McVay
Edmund Stiles

William M. Swain, Jr.
Vice-Chairs

Alan M. Hershey
Treasurer

Peggy McNutt
Secretary

Rosemary Blair
Katherine Buttolph
Beryl Robichaud Collins
Joyce Copleman
Alice Eno

Fred Gaskin
Richard S. Goldman, Esq.
Samuel M. Hamill, Jr.
Charles Hartman

Livingston Johnson
Robert C. Johnston
Mary Allesio Leck

Hella McVay
Thomas Poole
John Rassweiler
Paul Rubincam
Gordon Smith
Lisa Stockman
Neil Upmeyer

ADVISORS

Edward W. Adams, CPA
James Amon
Dennis Davidson

DELAWARE & RARITAN

GREENWAY 

STAFF

Peggy McNutt
Executive Director

Patricia Orban Quinby
Director, Public Outreach

Patricia B. Shapella
Director of Development

Dani-Ella Betz
*Program Coordinator,
Hamilton/Trenton Marsh Project*

Laurie Emde
Administrative Assistant

Jo Ann West
*Land Management and
Events Assistant*

Delaware & Raritan Greenway, Inc.,
is a regional, 501(c)(3) nonprofit land
conservancy dedicated to the preservation of
open space throughout central New Jersey.

Mahlon Lovett, *Design*
Heather Lovett, *Illustrations*
Printed on recycled paper

Our thanks to the following donors

(Gifts received from December 1 to December 31, 1996. Gifts received after January 1, 1997 will be acknowledged in our annual report at the end of the year.)

GREENWAY DONORS

J. Seward Johnson Sr. Charitable Trusts, The Curtis W. McGraw Foundation

HEADWATER DONORS

Kenneth Agle, Mr. & Mrs. Arthur Collins, Mr. & Mrs. Charles Hartman

TRIBUTARY DONORS

Phyllis Frakt & Alan M. Hershey, Dr. & Mrs. David Smith, Mr. & Mrs. Robert Stockman

WOODLAND DONORS

Stephea Fillo, Geraldine R. Dodge Foundation, Mr. & Mrs. Richard S. Goldman, The Robert Wood Johnson Foundation, Mr. & Mrs. Robert C. Johnston, Mr. & Mrs. Edward E. Matthews, Hella & Scott McVay, Mr. & Mrs. Tom Poole, Mr. & Mrs. William Roth, Kenette Sohmer & Gordon Smith, Janine L. Winant

TRAIL DONORS

Mr. & Mrs. James Amon, Elizabeth Cutler, Mary Jo Flaherty & Ray Marquez, Mr. & Mrs. Frederick L. Gaskin, Dr. & Mrs. Edmund Stiles, Mr. & Mrs. William W. Ward Sr., Donald E. West

WILDFLOWER DONORS

Mr. & Mrs. Lew Arno, Mr. & Mrs. Peter Benchley, Joe Bird, Mr. & Mrs. George J. Carcagno, Mr. & Mrs. Jeremiah Ford, Mr. & Mrs. James Hester, Mr. & Mrs. Charles Jaffin, Mr. & Mrs. David O. Johnson, Mr. & Mrs. Livingston Johnson, Beverley Jones, Florence & Steven Kahn, Drs. Robin & Gary Karpf, David N. Kinsey, Mr. & Mrs. Harry Levine, David F. Moore, Joyce Rainear, Paul R. Rubincam III, Roger M. Schwarz, Mr. & Mrs. Frank Sinden, Mr. & Mrs. Richard H. Willever

MAPLE LEAF DONORS

Barbara Andrew & Gerald Seid, Mr. & Mrs. Byron A. Campbell, Mr. & Mrs. Rene Carrillo, Richard M. Cohn, Thomas P. Cook, Mr. & Mrs. Donald Craver, Leslie Cubberley, Dr. & Mrs. Gordon Douglas, Louise Dunham, Mr. & Mrs. Peter Eaton, Mr. & Mrs. Zvi Eiref, A. Verdi Farmanfarmanian, Mr. & Mrs. William Forbes, Mr. & Mrs. Moore Gates Jr., Mr. & Mrs. Christopher Golden, Mr. David Goldfarb, Mr. & Mrs. Fred Goldstein, Mr. & Mrs. James Harford, Mr. & Mrs. Gavin Hildick-Smith, Mr. & Mrs. Rush Holt, Marlaime Lockheed & Steve Frakt, Mr. & Mrs. Michael Mathews, Rev. David H. McAlpin Jr., Judith M. Pollack & James C. Ohls, Craig N. Oren, Mr. & Mrs. Richard G. Osborne, Mr. & Mrs. William H. Osborne III, Judith M. Pollack & James C. Ohls, Denyse Reid, Mr. & Mrs. William Reuter, Elizabeth M. Sanford, Mr. & Mrs. Thomas H. Shelley III, Mr. & Mrs. John Trask, Mr. & Mrs. Terrence Wadsworth, Jo Ann West & Larry Veit, Mr. & Mrs. Jack Wise, Ann Yasuhara, Mr. & Mrs. Lucien Yokana, Thomas Zolandz

MEMBERSHIP

Mrs. Gerald Breese, Mr. & Mrs. Charles H. Burkman, Melissa Bohl & Ronald Sverdlow, Ann M. Cannon, SAFE/The College of NJ, Mr. & Mrs. Carl L. Danbury, Norman Denard, Jessie M. Ebischbach, Karen Stefaneli Ellis, Mr. & Mrs. Robert Fleming, Mr. & Mrs. Fred I. Greenstein, Elizabeth B. Hagedorn, Mr. & Mrs. Eugene M. Haring, Mr. & Mrs. Robert Harris, Lee W. Herrick, Gordon Hillgartner, Susan Hockday & Maitland Jones, Mr. & Mrs. George Holt, Mary T. Huber, Mr. & Mrs. John Jones, Mr. & Mrs. Haig Kasabach, Hamilton Township Water Pollution Control, Jeannette Manello & Richard Mueller, Mr. & Mrs. David C. Mattek, Mr. & Mrs. John McLoughlin, Dr. & Mrs. T. J. McNeill, Susan Michniewski, Mr. & Mrs. Joshua Milstein, Mohawk Canoe Club, Margaret Morgan, Beth Nichols, Ruth Palmer, Mr. & Mrs. Joseph Rochford, Dr. & Mrs. David N. Sharlin, Martha Shaw, Gale M. Smith, Caren V. Sturges, Caroline Suesserman, Mr. & Mrs. Christopher Tarr, Dorothy Morgenstern Thomas, Mr. & Mrs. Henry Weiss, Barbara Wethe, Elena Williams, Mr. & Mrs. Robert A. Woodman Jr., Mr. & Mrs. Brew Young

FRIENDSHIP DONORS

Mr. & Mrs. Martin Bloomenthal, Pat Sayles

IN-KIND

Peg Benton

Many thanks to James Irish Tree Experts for beautifying and maintaining our office landscaping.

Delaware & Raritan Greenway, Inc.

570 Mercer Road
Princeton, New Jersey 08540
(609) 924-4646

Patricia Orban Quinby
Editor

Nonprofit
organization
U.S. postage
PAID
Permit no. 54
Princeton, NJ