

GREENWAYS

Newsletter of
Delaware & Raritan Greenway, Inc.
Volume 8, Number 1
Fall 2000

In Perpetuity

Neighbors Preserve Land in Historic Griggstown

Two important steps combined to achieve a major leap forward in Greenway's preservation of the historic landscape along the Delaware & Raritan Canal. This achievement is a shining example of how neighbors who join together to protect their lands can make a lasting impact on their community.

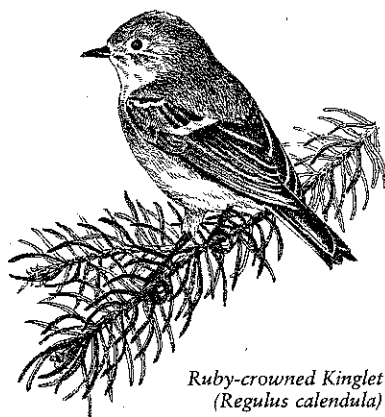
Neighboring property owners Cindy & Bart Hoebel and Dr. Lois Speiden have committed their historic farms to permanent preservation with D&R Greenway. These two adjoining properties protect 130 acres of woods and fields that border the canal between Griggstown and Rocky Hill. The properties are situated directly along Canal Road, linking across the D&R Canal and the Millstone River to lands preserved by Greenway along the Bedens Brook.

American Indians once used the Millstone River Valley as a transportation route. During the American Revolution, New Jersey patriots living in this region helped Washington's Continental Army. At the end of the war, General George Washington lived on a nearby farm, Rockingham, while the Continental Congress met in Princeton. Thomas Jefferson, Thomas Payne, and James Madison came down the road to Rockingham to celebrate and discuss Washington's number one priority, a federal government. You could say our nation was born right here, based on a letter to the colonies penned by Washington in 1783.

Fifty years later, the D&R Canal was built connecting the Delaware River at Lambertville and Trenton with the Raritan River in New Brunswick. Canal boats carried coal, iron, hay and lumber to help the northern states industrialize and win the Civil War.

The Speiden property was once part of a larger tract of land owned by Captain Jacob Van Dyke and his descendants during the 18th and 19th centuries. Maps and deeds tell us that structures existed on the property as early as 1766. Evidence including beams and a corner fireplace in the basement indicates that the current house was possibly constructed in the 19th century on the foundation of the older house. During the early 20th century, the Speiden property and the neighboring Hoebel property were associated with the Atlantic Terracotta Company, whose factory still stands today along Canal Road.

Dr. Lois Speiden's family grew organic vegetables and blueberries on their 85 acre farm. Their harvest was distributed through Princeton's Whole



Ruby-crowned Kinglet
(*Regulus calendula*)

Inside

- Fullam Conservation Legacy
- Two Gifts Announced
- Hamilton/Trenton Marsh
- New Greenway Video
- Galas for Greenway

Foundations, Corporations Support Land Preservation

Greenway announces new contributions that support our land preservation mission:

The Mary Owen Borden Foundation awarded a \$21,000 grant to support Partnerships for Preservation, a program to preserve environmentally sensitive lands by partnering the Greenway vision with local community goals for land preservation.

Public Service Electric & Gas Company contributed \$10,000 to support Greenway's efforts to increase the number of protected lands throughout central New Jersey.

Elizabethtown Water Company gave \$2,000 to support Greenway's land preservation work throughout central New Jersey.

The Martin Group of PaineWebber, Inc. contributed \$10,000 to support our education and outreach programs, including our new video, and the first in a series of case studies for landowners.

The William Penn Foundation awarded the second year payment of a grant totaling \$269,500 toward strengthening Greenway's capacity to preserve open lands through acquisition.

And special thanks goes to Educational Testing Service (ETS) for sponsoring Greenway's Annual Event and Galas kick-off on June 4. Our largest crowd ever enjoyed a delightful afternoon at the beautiful Chauncey Conference Center. Thanks to Eleanor Horne, vice president and corporate secretary of ETS, for offering to host us again next year. Mark your calendars and save June 3, 2001 to support Delaware & Raritan Greenway! ♡

Continued on page 4

Conservation Options

Two Gifts Enable a Green Future

BY LINDA J. MEAD, EXECUTIVE DIRECTOR

Greenway is pleased to announce two significant gifts that benefit all of us who care about a green future.

Bill and Linda Swain, Princeton residents and long-time Greenway supporters, have named D&R Greenway as a remainder beneficiary in a Charitable Remainder Unitrust (CRUT). A CRUT is an important estate planning tool that affords many benefits:

- Donor(s) receive income for life

or for a designated term of years,

- Donor(s) select the rate of income they will receive,
- Donor(s) avoid capital gains on appreciated property,
- Donor(s) receive a charitable income tax deduction when they set up the CRUT,
- Donor(s) reduce the value of their estate to lessen inheritance tax, and
- Greenway receives the principal at the end of the CRUT term.

The Many Faces of Greenway

The Board of Trustees is pleased to announce the election of Cynthia L. Reed to Greenway's Board. A committed environmentalist who has devoted her time and



Reed

energy to making a difference in the Princeton community, Cindy is working closely with Greenway to support land preservation. Cindy has worked in

public and private park restoration in New York City, where she is involved in efforts in Central Park. She and her husband, John, make their permanent home in Princeton.

John Mitchell is an honorary curator at the New York Botanical Gardens. He is a published author, and expert on anacardiaceae (the plant family that includes sumac, cashews, and mangoes). John has a vast knowledge of New Jersey plants. He is



Mitchell

involved with a number of non-profit boards including Wildlife Preservation Trust International, the American Bird Conservancy, and Bat Conservation International. John has joined Greenway as an advisor to help us with identifying and preserving critical plants and habitats.

Greenway sends best wishes to two people who have moved on to new adventures:

Katherine Buttolph served as a Greenway trustee from 1993 to 2000. An attorney for Princeton University, Kate made a significant contribution by providing legal documents and assistance with negotiations for Greenway lands. She recently moved to Massachusetts where she has been named attorney for the Massachusetts Community College System.

Patti Orban Quinby was Greenway's Director of Public Outreach. During her six years on staff, Patti developed the Hamilton/Trenton Marsh preservation initiative, and created many colorful and educational materials including Greenway's new video. Patti has been named in a new position as Communications Coordinator for the NJ State Green Acres Program.

Both Kate and Patti made important contributions to Greenway. We wish them the best. ♡

Bill served on Greenway's board of trustees until 1998. He helped Greenway in our early years to structure and complete land preservation deals in Lawrence, Hopewell and East Amwell townships.

In announcing their long-range endowment gift to Greenway, the Swains noted, "Greenway has and continues to be a very important part of our lives here in Princeton. We applaud the great strides that Greenway has made in the last decade in programs, in prudent administration and leadership, and in community relations and outreach.

"It is our sincere hope that this gift will act as a springboard for Greenway to attract other foundation and estate planning gifts that will ensure that the mission of Greenway and all its component parts will continue in perpetuity."

Greenway's vision of green is further enabled through a gift received in the form of a Bequest in a will from local environmentalist Roberta F. (Polly) Holden. Polly cared about protecting the environment and especially about saving land in her own community of Hopewell. Greenway's land preservation work began in Hopewell at our Northern Stony Brook Preserve, the first land preservation acquisition completed by a non-profit in partnership with the New Jersey Green Acres Program. We continue to be active in the Hopewell community, having preserved another 169 acres just this summer!

Polly's bequest in her will was designated by her estate for support of both our current land preservation work, and toward our future. A portion of Polly's bequest was dedicated to an endowment fund that will provide Greenway with long-term stability. Polly's estate shared her wishes in a letter to Greenway, "I hope that the gift will serve to support and reinforce D&R Greenway's role as central New Jersey's land acquisition organization."

These two methods of giving, a CRUT and a Bequest, provide donors with individual benefits

Continued on page 4

Common Ground

Walter Fullam's Legacy of Conservation

A generation goes, and a generation comes, but the earth remains for ever.—Ecclesiastes 1:4

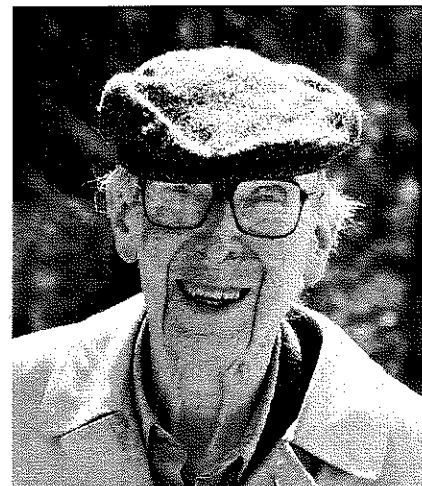
Walter Fullam loved the quiet beauty and serenity of his rural Hopewell property, Cedar Ridge, and wanted to share it with others. When his sons were young, he shared the land with Boy Scouts who enjoyed nature hikes and camping trips at Cedar Ridge. When it came time to decide the future of his land, Walter placed his trust in Delaware & Raritan Greenway.

Walter began his conservation journey years before when he placed a conservation easement on family lands he owned in Massachusetts. Working with the Trustees for Reservations, the oldest land trust in the country, Walter was a pioneer in land conservation long before others took up the cause. In 1991, he made a commitment to preserve his 80 acres on Van Dyke Road in Hopewell with Greenway.

The conservation easement on Cedar Ridge ensures that the land will never be developed. In a further act of generosity, Walter invited the public to experience the land by providing public access trails that he helped to clear and maintain over the years. Walter shares his stewardship philosophy in Greenway's new video, *A Legacy of Land Protection*: "It's important to preserve the land we love. I feel peace and calm when I walk the fields and woods among birds and wildflowers."

The entire 80-acre preserve is part of the 21-mile Stony Brook Greenway which will one day link protected lands from the brook's headwaters in the Sourland Mountains to the Delaware & Raritan Canal State Park in Princeton.

Today, the Cedar Ridge Trail winds through 30 acres of the Fullam property, offering visitors a walk through protected meadows and woodlands abundant with



Walter Fullam

wildlife. Numerous native wildflowers grow in the meadows, and bluebirds can be found nesting in

Louise Wilkens Joins Staff to Oversee Stewardship of Preserved Lands

Louise Wilkens, a resident of Hillsborough and dedicated conservationist, has been named Greenway Land Steward. A growing inventory of preserved land has led Greenway to recognize the need for close monitoring and stewardship to protect the integrity of the woods and fields we permanently preserve. Louise has already made a significant contribution at Greenway's McBurney Woods, Cedar Ridge, and Woods Brook preserves, among others. She has managed site improvements and organized volunteer crews. Louise enthusiastically shares, "I am just amazed at how beautiful these lands are, and it's heartening to me to know that these properties will stay preserved and not sprout houses."

Louise comes to Greenway with experience in developing and implementing environmental projects that have benefitted central New Jersey. As Environmental Project Leader for AT&T Pioneers,

the boxes placed along the meadow's edge. Hikers can follow the trail along the spring-fed Stony Brook where may fly and stone fly nymphs are thriving, indicating clean water. Beyond the meadows stands a majestic oak-hickory forest and a thick stand of cedar, a unique habitat favored by long-eared owls, Cooper's hawks and prairie warblers. A small parking area can be accessed along Van Dyke Road, where a colorful kiosk welcomes visitors to the trail.

When Walter passed away earlier this year, he left a legacy of conservation by ensuring that the place he cared for so deeply would remain forever wild. He also passed his philosophy of stewardship on to his family. His wife Dorothy and sons Francis, W. Ross, and Caleb carry on with the values that Walter espoused. All of us at Greenway are grateful for Walter's foresight. He knew the value of land to restore us and bring us together as a community. ♡

her former company's community service organization, she coordinated 64 projects at Six Mile Run involving nearly 2,000 volunteers. The volunteers built 12 miles of nature trails, removed 90 tons of debris, cleaned 10 miles of river bank and began restoration of five historic buildings. Thanks to Louise, Greenway has been awarded a \$5,000 grant from AT&T Cares to fund an educational nature trail.

Her accomplishments include serving on the Hillsborough Open Space Advisory Committee, and development of the Hillsborough Open Space Master Plan which qualified the township for \$3 million in grants and loans from the Green Acres Planning Incentive Program.

Louise has received several awards for her community service including Volunteer of the Year from the New Jersey State Park Service, and Pacesetter from the AT&T Pioneers. ♡

In Perpetuity

Continued from page 1

Earth Center. With Lois' parents no longer living, and the family living elsewhere, Lois decided to sell her property. She was pleased to learn of Greenway as an option.

D&R Greenway explained the tax benefits of a bargain sale to Dr. Speiden. Although she had been offered more money from developers, Lois chose to sell her property at a bargain sale price to Greenway for preservation. Lois made a donation of part of the value of her property, which enabled her an income tax deduction, and received cash for the remaining value. Most importantly, Lois was able to preserve the property in the name of her family, recognizing her parents' keen love of the land.

Cindy and Bart Hoebel purchased the neighboring property, "Little Valley Farm," twenty-five years ago as a real estate investment. The land includes gently sloping forest and fields, paddocks, and an historic house that was once a boardinghouse for the terracotta factory. Bart says he struggled with rent control, muddy roads and repairs on the old house with its five apartments. He planted 3,000 pine seedlings, and gradually fell in love with the property's beauty and history and wanted to see it preserved. He and

Conservation Options

Continued from page 2

during their lifetime and within their estate. Greenway applauds the leadership and vision of the Swains and of Polly Holden. Thanks to their foresight, we can all enjoy a green future.

To find out more about estate planning tools to help you enable a vision of green through Delaware & Raritan Greenway, call Executive Director, Linda Mead at (609) 924-4646.

Note: Special thanks to Bob Sajdak of Comerica Bank for technical advice on this article. ♣

Cindy chose a conservation easement with Greenway that permanently protects the land from any future development. The Hoebels continue to own the property and receive income from its agricultural uses.

Bart points out with obvious delight, "This is a very different and far better investment than I ever imagined. Greenway supporters and New Jersey taxpayers can be proud of contributing to a beautiful recreational area, avian flyway, wildlife sanctuary, waterway, and a heritage corridor in the midst of a densely populated area."

Bart and Gary Forsythe, who rents the barn and runs Canal View Stable, are creating two miles of walking and riding trails for public access that connect to the canal towpath at the Little Valley bridge. Bart invites Greenway members and the community to come see the place first-hand. "Come for a walk where you cannot hear a car, but you may hear birds and horses, and see pine trees decorated with fireflies."

With money from the bargain sale, the Hoebels are trying to start a "floating classroom" on the Delaware River with an historic

steamship that once operated on the Ohio Canal. Bart's goal is to give students and teachers an exciting opportunity to learn about clean water ecology. He is modeling his program after the Clearwater sloop on the Hudson.

Franklin Township, Somerset County, and the NJ Green Acres Program joined with Greenway to preserve these lands. The Speiden property has been transferred to Somerset County Parks, and Greenway holds the Hoebel conservation easement jointly with Franklin Township. Partnerships are the wave of future land preservation. Greenway is in the forefront by establishing partners that are committed to work together for common goals.

Tom Boccino of Somerset County Parks shares the county's enthusiasm. "It was actually D&R Greenway that brought these properties to our attention. It was a really great starting point for the county in Franklin Township. It opened a lot of doors to partnering and we've come a long way in establishing a presence in that area. It's been a totally positive experience." ♣



Little Valley Farm

"Come for a walk where you cannot hear a car, but you may hear birds and horses, and see pine trees decorated with fireflies."

—Landowner, Bart Hoebel

Greenway Unveils New Ways to Learn about the Hamilton/Trenton Marsh

New milestones have been reached in protecting the Marsh and making it accessible to all who wish to learn about this natural and cultural treasure in our own backyard.

On a picture-perfect September afternoon, Greenway launched a flotilla of canoes to inaugurate the new Marsh Canoe and Kayak Trail. Led off by Hamilton Mayor Glen Gilmore, canoeists learned about shipwrecks, pre-historic relics and Joseph Bonaparte. Naturalists Mary and Charlie Leck pointed out rare plants including Wild (Indian) Rice. We were thrilled to spot a wood duck, great blue heron, and red-tail hawk. Participants learned that the Marsh includes a National Historic Landmark at Abbott Farm, the largest Native American site in the Northeast.

The Marsh Canoe and Kayak Trail provides visitors with new ways to explore the marsh. Greenway has created a self-guid-

ing brochure that is coordinated with signs placed along the "water trail." Anyone with canoeing skills can check the tide charts from the web site listed in the brochure and plan an educational adventure at their leisure.

American Beaver
(*Castor canadensis*)

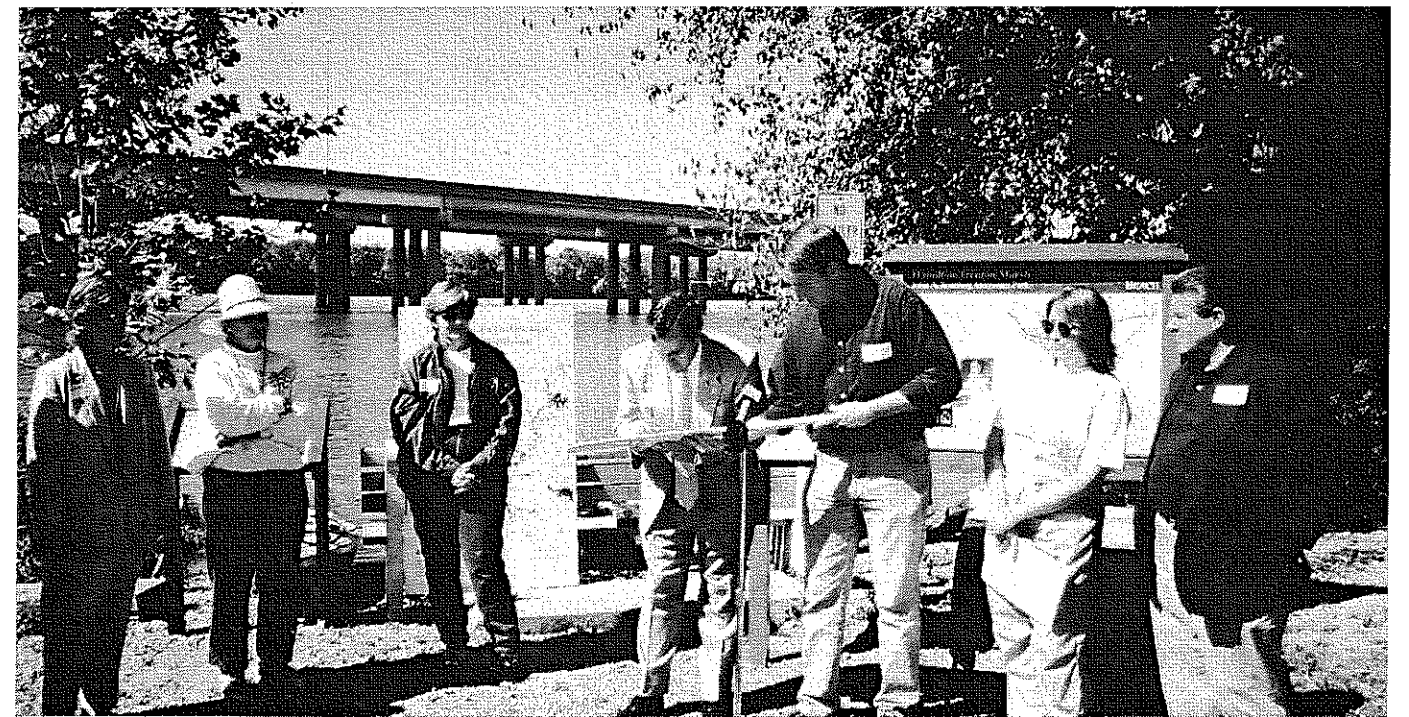


Funding for the trail was provided by the NJ DEP Division of Parks & Forestry, Recreational Trails Program. Lance Miller, Director of the NJ DEP Division of Watershed Management, presented

a proclamation from Governor Whitman declaring September 26th to 30th as "Rivers 2000 Days," urging people to increase their awareness of rivers and watersheds. As part of the celebration, Greenway was joined by state, county, municipal and business partners who signed a special canoe paddle that traveled across the United States and was presented to President Clinton on October 7.

Brochures for the Marsh Canoe and Kayak Trail can be obtained by calling the Greenway office. They will be made available in public offices and libraries.

An accomplishment of the Marsh Education Committee has been announced by Dr. Mary Leck, biologist at Rider College and expert on marsh ecology. The committee has created a new teacher guide and established a web site for those who want to learn about the special features of the marsh. The teacher guide includes lesson plans, information, and resource lists. It will be made available to local schoolteachers and nature centers along with teacher resource kits. Those who wish to visit the web site can access <http://www.rider.edu/sites/marsh/> ♣



(l to r) Carol Collier, Exec. Director, DRBC; Dr. Mary Leck; Donna Lewis, Mercer County; Lance Miller; Mayor Glen Gilmore; Linda Mead; and Assemblyman Gary Guear pass the Rivers 2000 Paddle



General George Washington and Greenway Chair Neil Upmeyer present Dennis Davidson of NJ Green Acres with the Year 2000 Donald B. Jones Award

"Our vision is to preserve the landscape and link the lands that played such a pivotal role in our nation's history. D&R Greenway is the leading organization to help us achieve this goal throughout central New Jersey."

—Dennis Davidson,
Deputy Administrator, NJ DEP
Green Acres Program

Good Times for All at Greenway Galas

gala: a celebration, festivity, party, pleasure, extravaganza, happening, social gathering, as of invited guests at a private home, for conversation, refreshments, entertainment.

This summer Greenway launched a new series of fifteen fun events to support our mission of protecting our region's treasured open space. Who would have thought it could be so easy and so

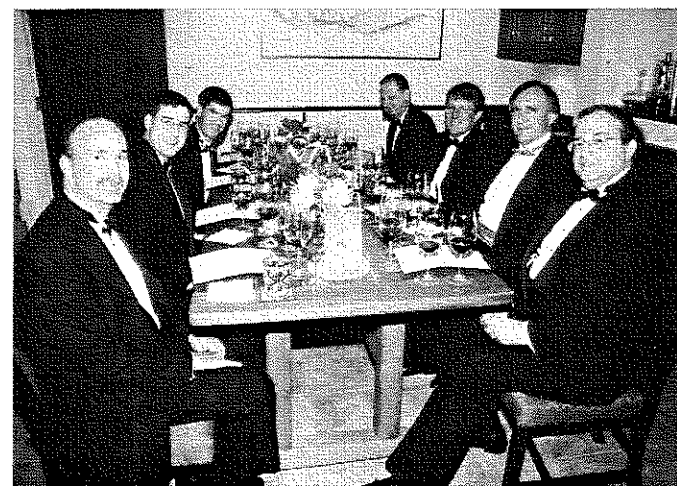
much fun to support a good cause! We are grateful for the wonderful response from sponsors, event-goers, and art-purchasers which has generated over \$90,000 to date. Those who have had the pleasure of participating will remember the magical evening of dressage & champagne, the gentleman's black tie wine-tasting, and the many forms of wild life we've enjoyed from neotropical migrant birds to alpacas. If you've missed the op-

portunity to join us, you still have a chance. Call us now to sign up for one of the four remaining Galas:

- On November 28, 2000 you and a dozen friends can be treated like VIPs at the *Trenton Titans Power Play*. Your party will enjoy a deluxe corporate suite at the new Sovereign Bank Arena. You'll be served a gourmet dinner and drinks compliments of PSE&G. Your party is the lucky winner of an all-star shirt and a hockey stick, both signed by the Titan team. Suggested group ticket price: \$2,000 or highest bid. *Call now!*

Continued on following page

Below: A distinguished group of Greenway supporters enjoy a wine-tasting Gala at Tusculum



Above: Musical dressage riders perform for crowds at magical Gala event

Good Times

Continued from previous page

- On April 21, 2001 at 7 a.m. we'll learn *Fly Fishing on the Stony Brook*, an "on stream" fly fishing seminar at historic Honey Brook Farm. You'll be fully outfitted to pursue your catch of the day, after which you'll enjoy an outdoor brunch on this preserved farm. Tickets: \$100 per person includes fishing gear and bug basics!
- On May 5, 2001 we will *Paddle the Pines*. This canoe journey down the Oswego will be led by Greenway Chair Neil Upmeyer. Sorry, we're sold out! Try again next year.
- On May 12, 2001 we'll meet at Lawrenceville School at 3 p.m. for a *Bluebird Trail Walk and Afternoon Tea*. After exploring twenty bluebird houses, we'll settle in for

teatime at the Mott residence adjacent to the school. Tickets: \$40 per person or \$100 per family.

Greenway extends many thanks to our excellent Galas Committee for planning memorable and distinctive good times: Sophie Glovier (Chair), Kem Barbosa, Rosemary Blair, Alice Eno, Irvine Gaskin, Alix Gerry, Deborah Strom Gibbons, Laura Hanson, Chuck Hartman, Carolyn Healey, Jane Keller, Lisa Marttila, Hella McVay (Co-Chair, Kick-off Event), Jo-Ann Munoz, Diane Rosenberg, Tibbie Samios, Amanda Stanton, Lisa Stockman, Regan Tuder, Mary Weeden, and Liz Wert. Welcome to new committee members Dorothy Bissell, Liz de Turo and Meredith Peterson. Planning for 2001 has already begun. To learn more, call Sophie Glovier at (609) 252-1708. Stay tuned for fun times! 🍷

New Video Illustrates Land Preservation through the Eyes of a Landowner

I think the Greenway's great... it's a group of dedicated professionals who really care about what they're doing, and who do their best to help you walk through the bureaucracy, the paperwork...the Greenway staff really know how to explain all that.

—Deborah Strom Gibbons,
Greenway landowner

Have you ever wondered what motivates the people who preserve their land with Greenway? Have you secretly wished you could walk the fields and forests with Greenway landowners, and ask why they chose to make this most important commitment? Greenway's new video, *A Legacy of Land Protection*, will allow you to experience the answers to your questions first-hand while enjoying the warmth and comfort of your armchair. Designed especially for landowners and their advisors, the new video showcases permanently preserved lands and illustrates how landowners can achieve financial

and land conservation goals. You'll hear from landowners who have protected their lands with a conservation easement, and who have reaped the tax benefits of land preservation. You'll hear from Greenway founders and supporters about why it is so critical to preserve land here in central New Jersey - before the bulldozers destroy the special places we still have left.

Our video "stars," trustees, and sponsors were recently treated to a "red carpet" premiere. As the weather turns chilly, now is the perfect time to pop some popcorn and host your own video party as a way to introduce your friends to Greenway. Landowners and supporters who would like to learn more can do so by calling Pat Shapella at (609) 924-4646.

Special thanks to video sponsors J. Seward Johnson Sr. Charitable Trusts, The Martin Group of PaineWebber, Inc., PSE&G, and a generous anonymous donor. 🍷

Greenway Gives Thanks

In celebration of Thanksgiving, D&R Greenway gratefully acknowledges the support of our business and corporate sponsors. Your contributions enable us to reach out to landowners to preserve the quality of life in central New Jersey.

Many thanks to:

AT&T Foundation
Banisch Associates: Michael Bolan and Frank Banisch
Benner Valuation Services
Bloomberg L.P.
Bristol Myers-Squibb Company
By Design
Central Lewmar / Pick Quick Papers, Inc.
Charles Jones, LLC
Drinker, Biddle & Shanley LLP
Educational Testing Service
Elizabethtown Water Company
Ethicon, Inc.
Gillespie Advertising
Glenmede Trust Company of New Jersey
Italian People's Bakery, Inc.
Jamieson, Moore, Peskin & Spicer
Janssen Pharmaceutica, Inc.
Lucent Technologies
Marie H. Katzenbach School for the Deaf
Maser Consulting P.A.
Mason, Griffin & Pierson, P.C.
Mathematica Policy Research, Inc.
Middlesex Water Company
Miele, Inc.
PaineWebber, Inc. of Princeton - The Martin Group
Princeton University
Public Service Electric & Gas Company
Roma Federal Savings Bank
Ronald A. Curini Appraisal Company, Inc.
Sarnoff Corporation
Sir Speedy
Site Works Consultants, Inc.
Smith, Stratton, Wise, Heher & Brennan
Summit Bank
U.S. Trust Company of New Jersey
Whole Earth Center of Princeton, Inc.
Williams Transco Gas Pipe Line Company
Woodwinds Associates, Inc.

D&R Greenway, Inc. Board of Trustees

Neil Upmeyer
Chair

Charles M. Hartman
Hella McVay
Edmund Stiles, Ph.D.
Vice-Chairs

Alan M. Hershey
Treasurer

Linda J. Mead
Secretary

Rosemary Blair
Thomas J. Cawley
Joyce Copleman
Alice Eno
Fred L. Gaskin
Sophie Glover
Richard S. Goldman, Esq.
Ashton Harvey
Robert C. Johnston, Esq.
Mary Alessio Leck, Ph.D.
Cathleen R. Litvack
Thomas A. Moore
Thomas M. Poole
John Rassweiler, Ph.D.
Cynthia L. Reed
Lisa Stockman
James Trowbridge
John Weingart

ADVISORS

James Amon
Dennis Davidson
John Mitchell
Lewis W. Parker III, CPA

DELAWARE & RARITAN

GREENWAY

STAFF

Linda J. Mead
Executive Director
Patricia B. Shapella
Director of Development
William C. Rawlyk
Land Acquisitions Specialist
Laurie Emde
Office Manager
Nancy Breden
Administrative Assistant
Louise Wilkens
Land Steward

Delaware & Raritan Greenway, Inc.,
is a regional, 501(c)(3) nonprofit land
conservancy dedicated to the preservation
of open space throughout central New Jersey.

Kathryn Wannemacher, *contributing writer*
Mahlon Lovett, *design*
Heather Lovett, *illustrations*
Printed on recycled paper

Your Gift Can Make a Difference

The future of our region depends to a large degree on the foresight and generosity of today's visionaries who are willing to support the protection of open space and consider new ways to make gifts. In our first decade, D&R Greenway has protected more than 3,200 acres in central New Jersey. We are working day-to-day to protect valuable open space and reach the ambitious goal established by Governor Whitman and endorsed by the citizens of New Jersey to protect 1,000,000 acres in the next ten years. To accomplish this goal, D&R Greenway is aggressively pursuing landowners with a commitment to land conservation and implementing a broad range of techniques to protect land and meet the unique needs of each landowner.

Funds from the State Green Acres Program and county and local government open space funds help to meet this challenge but can only be used for direct land purchase. Support from individuals, corporations and foundations provide critical support to D&R Greenway's land acquisition operations.

GIFTS OF CASH OR MARKETABLE SECURITIES

- Gifts may be designated to support specific programs or applied to D&R Greenway's general operating purposes.

GIFT OF LIFE INSURANCE

- Name D&R Greenway as the policy owner and beneficiary, and receive immediate tax deductions on your premium payments.

NAMED ENDOWMENT FUNDS

- The principal of a fund established in your name, or someone you wish to honor or memorialize, is managed for growth, while the income from the fund supports programs.

CHARITABLE REMAINDER TRUST (CRT)

CHARITABLE REMAINDER UNITRUST (CRUT)

- You can provide D&R Greenway or yourself with a steady income stream, an immediate income tax deduction, and also leave a significant future gift to D&R Greenway. Both arrangements may entitle you to substantial tax savings.

BEQUEST

- Name D&R Greenway as a beneficiary in your will and make a lasting contribution to the organization and land preservation in central New Jersey.

For more information about any of these methods of giving, please call us at (609) 924-4646. We hope that we can count on your support today!

Delaware & Raritan Greenway, Inc.

570 Mercer Road
Princeton, New Jersey 08540
(609) 924-4646, Fax (609) 924-5577
Email info@delrargreenway.org

Nonprofit
organization
U.S. postage
PAID
Permit no. 54
Princeton, NJ