

GREENWAYS

Newsletter of
Delaware & Raritan Greenway, Inc.
Volume 10, Number 1
Winter 2002

In Perpetuity

D&R Greenway Announces a Watershed Year

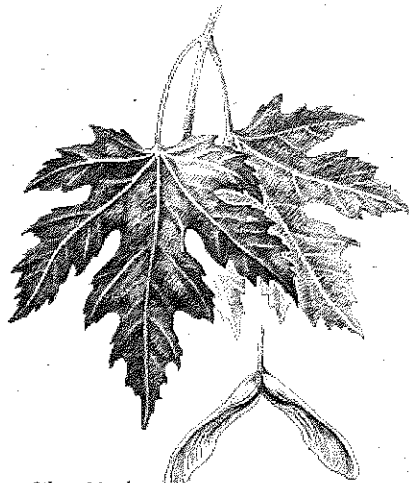
The year 2001 was a watershed year of achievement for Delaware & Raritan Greenway. We set new records in numbers of acres preserved (1,226) and properties protected (14). We raised significant contributions of funds at an unprecedented pace, and thanks to you—our supporters—we were able to permanently protect lands valued at more than \$40 million. D&R Greenway's supporters have told us in no uncertain terms that green parks and open space are important to their quality of life. As we embark on future directions (see story inside), D&R Greenway is committed to placing the preservation of our region's fields, forests and streams as our number one priority.

The wide, open spaces of Greenway Meadows and Coventry Farm in Princeton... the sweeping fields and majestic beech trees of Carson Road Woods in Lawrence Township... the original Robbins homestead in Robbinsville... two hundred and seventy-three acres along the Alexauken Creek in West Amwell... fields of butterflies along the Cedar Brook in Cranbury. These are but a few of the lands that will remain undeveloped in our local communities through the past year's efforts of D&R Greenway with assistance from our partners and friends.

Jim and Barbara Griffin were among the fourteen landowners who protected their properties with D&R Greenway this year. Barbara shares, "Our family feels a collective responsibility to maintain a natural world that can sustain us all. The grace and cooperation which the Greenway exhibited in meeting our personal needs, and their adeptness in persuading state, county and local groups to support our property's preservation, encouraged us throughout the process. D&R Greenway has made it possible for us to pass this property on to succeeding generations as it has come down to us over more than 200 years."

By involving their family in planning for their conservation easement, the Griffins were able to achieve important estate planning goals and assure that their farm will remain part

Continued on page 2



Silver Maple
(*Acer sacharinum*)

Inside

- Where Greenway is Going
- 2001 Accomplishments
- Annual Donor Recognition
- Greenway Will Have a Permanent Home
- Greenway Tops List

Foundations, Corporations Support Land Preservation

Many thanks to all our corporate and foundation supporters who contributed \$1,000 or more to support our mission in 2001: Accel Partners; AT&T; David and Patricia Atkinson Foundation; The Baldwin Foundation; Bloomberg L.P.; The Mary Owen Borden Foundation; Bristol-Meyers Squibb Company; Educational Testing Service; The Geraldine R. Dodge Foundation; Doerler Landscapes, Inc.; Elizabethtown Water Company; Ethicon; ExxonMobil Foundation; Fleet Asset Management; The Glenmede Trust Company; The Schnur Family Fund of the Jewish Community Foundation of Princeton Mercer Bucks; Charles Jones, LLC; The Robert Wood Johnson Foundation; The Larson Land Foundation; Mathematica Policy Research, Inc.; The William Penn Foundation; Public Service Electric & Gas Co.; Sierra Foundation, Inc.; Smith, Stratton, Wise, Heher & Brennan; Thompson Land; The Martin Arnold Group of UBS PaineWebber; U.S. Trust Company of New Jersey; Williams Gas Pipeline-Transco; York Fence Construction Co., Inc.

**Italicized names indicate new gifts to Greenway since the last newsletter.*

Save the Dates

- Saturday, April 26. Run for Open Space, sponsored by students of Princeton Day School to benefit Greenway. Call Coleen Casey at (609) 924-6700 x218 for more information.
- Sunday, June 9. The Good Time Galas for the Greenway Kickoff Event. Call Nancy at (609) 924-4646 for more information. ♣

Watershed Year

Continued from page 1

of the rural landscape forever.

Kathy and John Winant joined with John's brother, Eppy, to honor the wishes of their mother Janine to preserve Coventry Farm, a gateway to the Princeton community on The Great Road. Mike McIntire honored his grandmother's last wish for her property by carrying out the preservation she had begun on her 88 acres in the Sourland Mountains. The Frosztega family brought together three generations to celebrate the preservation of the "little farm my father bought to get away from the city" in Cranbury.

Landowners choose land preservation for many reasons. In Jay Gompper's case, partnering with D&R Greenway as a conservation buyer of 28 acres across from our Northern Stony Brook Preserve

enabled him to realize his dream of living in the woods. Jay joins with Greenway in his love for the land, *"I am forever grateful to the Greenway for making this happen. Preserving this property has made two dreams come true—mine, and the former landowners' who loved and cared for this land for many years and were able to retire knowing their property would be preserved, not developed."*

In another situation, a couple who had assembled six adjoining properties—including the land where 'Invisible Man' Claude Rains once lived—were pleased to preserve land with D&R Greenway, rather than sell the 273 acres to a developer as was previously considered. The houses that could have sprung up on the land will remain forever unbuilt, and the deep

forests and fields will instead provide a peaceful haven for wildlife and hikers.

All of these lands weave a thread of green through our backyards that makes all of us glad to call this place "home." D&R Greenway will continue to work to save the special places in our community that provide the unique character we treasure and that makes us want to live in central New Jersey. We will work toward creating greenway linkages where hikers can enjoy nature, and where birds and wildlife can roam. We will protect our water quality by protecting the lands that border our streams. And we will protect our quality of life by protecting the land for future generations. Our supporters deserve our full commitment. We pledge to continue to make land preservation our number one priority now and in the future. 🌿

Conservation Options

Honor Role 2001

County	Township	Acres	Type of Preservation
Hunterdon	East Amwell	88	Conservation easement
Hunterdon	East Amwell	29	Conservation easement
Hunterdon	West Amwell	173	Purchase with county
Hunterdon	West Amwell	273	Purchase with State
Mercer	Hopewell	122	Conservation easement
Mercer	Lawrence	183	Purchase from developer
Mercer	Princeton	60	Purchase from estate
Mercer	Princeton	165	Combined purchase and conservation easement
Mercer	West Windsor	49	Purchase facilitated for township
Mercer	Washington	23	Purchase facilitated for township
Middlesex	Cranbury	31	Joint purchase with township and state
Somerset	Franklin	0.5	Purchase with State
Somerset	Hillsborough	11	Conservation easement
Somerset	Montgomery	19	Conservation easement facilitated for township

D&R Greenway works with state, county and municipal partners to protect land throughout central New Jersey. We provide "know-how," skills and funds to ensure that these special places will remain as part of our landscape forever.

Because of our skill and our ability to engage many partners, we are asked more and more to take the lead in securing land preservation commitments for public agencies. We work with each individual landowner to meet the landowners' own unique financial and family interests while ensuring that the conservation values of the land are protected.

The honor roll grows longer every year—in 2001, the list of D&R Greenway preserved lands included the fourteen listed here. Call Greenway executive director Linda Mead at 609-924-4646 to find out how you can join in our honor roll of land preservation. 🌿

Where Greenway Is Going

The overwhelming and unprecedented support by private citizens for land preservation in our region has given Delaware & Raritan Greenway a mandate to continue doing what it does so well on an even more ambitious scale: that is to preserve and protect our natural landscape in central New Jersey.

In the past three years, Greenway has been an integral part of what can only be called "an enlightened land conservation movement" in central New Jersey. This year, more than five hundred individuals have joined the Greenway family of over 1,500 people who have supported our work to preserve more than 4,500 acres during the past twelve years. These individuals also belong to the constituencies of the 75 municipalities in our six county region, the majority of whom have voted not once, not twice, but three times at the local, county, and state level to support open space preservation with their tax dollars. This is a powerful family of contributors to Greenway's mission of preserving open space, protecting the waterways that provide clean water, securing scenic beauty, and linking significant parcels together as protective buffers for wild life and biodiversity.

The trustees and staff of Delaware & Raritan Greenway will spend the

next several months identifying the strategic areas in our region that most clearly meet the goals of Greenway. We recognize that the long-term health of our local communities depends on the acquisition and stewardship of these significant areas. Focusing on preserving large contiguous tracts of land in our region will actually improve our greenbelt areas for wildlife habitat, biodiversity, and recreation. The urgency of acquiring and protecting these larger and more significant parcels is obvious: they are under the greatest threat of development. The trustees and staff look forward to presenting these far-reaching plans to our contributors in the next few months.

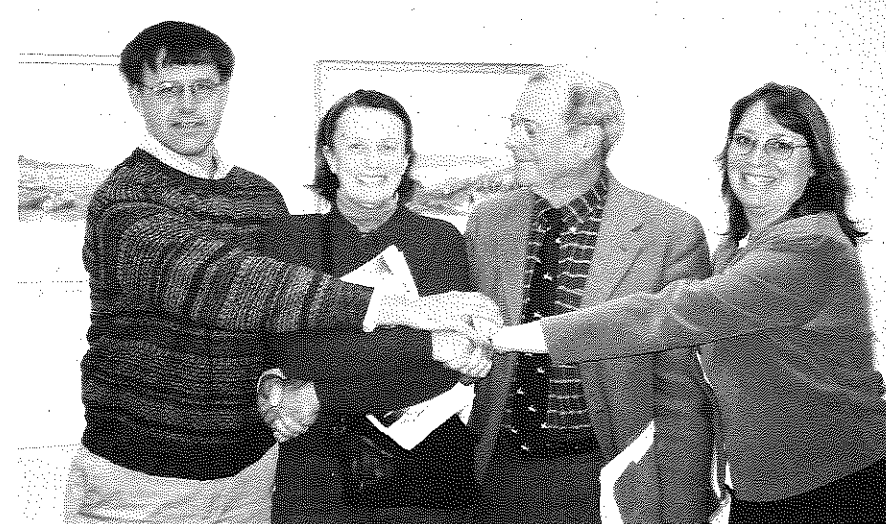
In order for Greenway to move quickly when one of these targeted parcels of land in a critical area under threat of development becomes available, the trustees are evaluating the creation of a "revolving land fund" over the next several years. A revolving land fund is essentially contingency cash that is available when state Green Acres funds already committed towards the purchase of a critical property have yet to be released. That can sometimes take up to a year. These funds will then be replaced when the state funds are paid to Greenway.

In addition to the unprecedented support of individuals for land conservation, the landowners of central New Jersey are also joining our "enlightened land conservation movement." Many more offers of land for easements, public access and permanent preservation are available than Greenway has staff or money to process. A revolving land fund will expand our capability by supplementing private donations from individuals when public money is either unavailable or we have exceeded our allotted commitment from the state. Both of these situations have occurred in the past two years, and in one case, a prime parcel of land was lost. A revolving land fund will eliminate this risk.

The trustees and staff are also developing plans to concentrate on fundraising for an endowment fund to help support Greenway's general operating expenses. As with most non-profit organizations, Greenway is dependent on contributions from grants and individuals to pay salaries and overhead. Interest from an endowment fund will provide a stable and predictable source of revenue for operating expenses. The ability to maintain our experienced professional staff is the key to Greenway's success in reaching our land preservation goals.

A more imminent goal is raising funds for the renovation of the barn on the former RW Johnson estate, now called Greenway Meadows, named in honor of Greenway's role in preserving this scenic property in the heart of Princeton. An accompanying article gives our supporters more detail about the barn and its role in attaining the ambitious goals outlined here.

Each one of these goals will require extraordinary fund raising efforts, especially for the preservation of thousands of acres of threatened open space in central New Jersey. Delaware & Raritan Greenway believes that the unprecedented support and enthusiasm of its contributors is a mandate to embark on these ambitious and far reaching plans for the future of land preservation in central New Jersey. 🌿



The Griffins join with Greenway in celebrating the preservation of a significant linkage

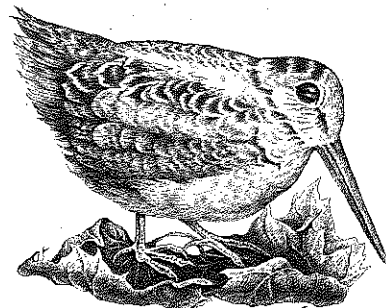
Did You Know?

Delaware & Raritan Greenway is central New Jersey's state leader in land preservation.

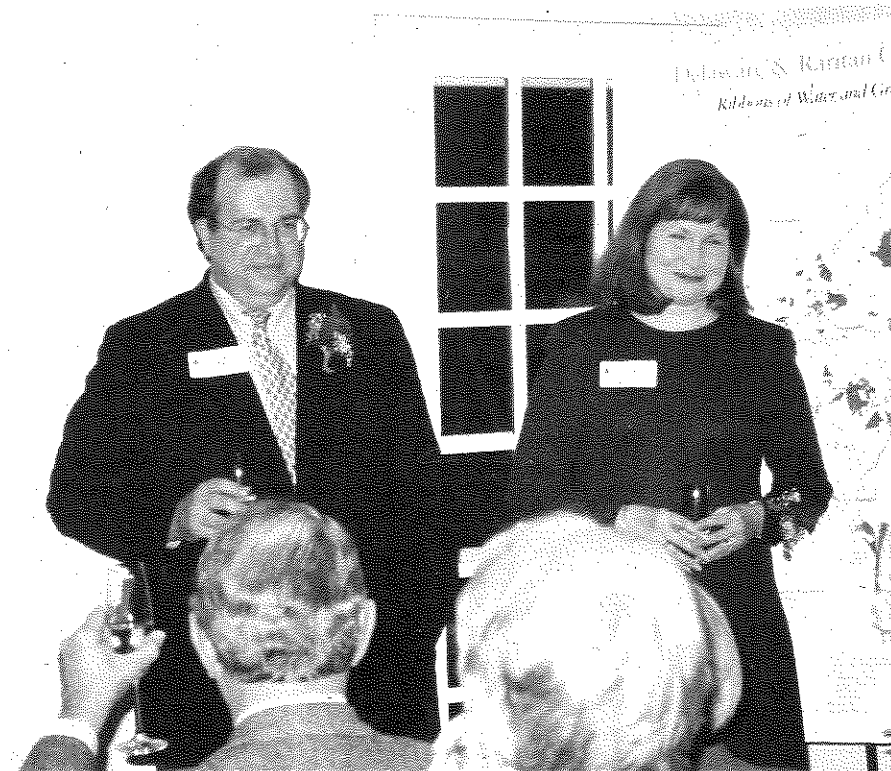
- We have protected a total of 4,593 acres since 1989.
- The total value of the land preserved by D&R Greenway is \$78.3 million.
- 1:35 ratio: For every \$1,000 spent on staff time and overhead, we have preserved lands valued at \$35,000.
- The total number of properties D&R Greenway has protected is 63.
- One-third of these properties have been protected in the past two years.
- The value of land donated by landowners for preservation is greater than \$10 million.
- We are actively working to preserve land in 6 counties: Hunterdon, Mercer, Middlesex, Somerset, Monmouth and Burlington.

D&R Greenway is preserving the critical features of central New Jersey's rural, urban and suburban landscapes including:

- The Sourland Mountains—at 20,000 acres, the region's largest contiguous forest;
- The Hamilton/Trenton Marsh - the largest freshwater tidal marsh on the Delaware River;
- The Stony Brook—home to endangered species and a greenbelt that connects suburban and rural communities from the Sourlands to Princeton; and many beautiful natural areas in *your* backyard that will be featured in upcoming newsletters.



American Woodcock
(*Scolopax minor*)



Hosts Tom and Avril Moore at the 2001 Landowners Reception held at Tusculum

Bequest information

We hope that you have put Delaware & Raritan Greenway in your will as a recipient for a Bequest. Sample wording to give to your attorney for inclusion in your will:

"I devise and bequeath to DELAWARE & RARITAN GREENWAY, INC., a not-for-profit corporation whose address is 1327 Canal Road, Princeton, New Jersey, the sum of \$_____ [or _____ percent of my residuary estate] for its general uses and purposes."

Delaware & Raritan Greenway's mission is the preservation and protection of open space in central New Jersey. Including Delaware & Raritan Greenway in your will is one of the most significant things you can do to save our landscape for your children and their children. It is a true legacy.

If you are interested in other giving opportunities such as a charitable remainder trust or the donation of your land for tax benefits, call Carol Christofferson at D&R Greenway (609-924-4646).

Delaware & Raritan Greenway Year 2001 Accomplishments

Preserving our Heritage  Protecting our Future

Thanks to overwhelming support from the community of Greenway contributors, Delaware & Raritan Greenway celebrates a year of unprecedented accomplishment. The fourteen individual sites we protected in 2001 include three signature properties in the Princeton-Lawrence communities and stretch across the region to create ribbons of green from Cranbury to the Sourland Mountains, central New Jersey's forested treasure. These lands are collectively valued at \$42 million. Donors joined with Greenway as never before to show their desire for saving the special places in our community that we call "home." It is with great appreciation to our partners and donors that we celebrate our significant accomplishments for the year. ♣

Year 2001 Accomplishments

To carry forth our vision of a greenway network in central New Jersey, D&R Greenway:


- Saved an unprecedented 1,226 acres of land located in four counties and eleven municipalities, bringing the total since our founding in 1989 to 4,593 acres preserved forever;
- Spearheaded the preservation of the two largest single properties remaining in Princeton Township, protecting 220 acres including 105 new acres of public parkland to benefit the Princeton community;
- Raised \$3 million in private contributions in partnership with Lawrence Township residents for the preservation of Carson Road Woods, 183 acres of fields and forest now protected as a public park for hiking, biking and nature appreciation;
- Received recognition of our leadership in land preservation from the State of New Jersey through the maximum award of Green Acres funding to a regional nonprofit land trust;
- Protected 562 acres in the Sourland Mountains, the largest contiguous forest in central New Jersey that provides critical breeding habitat for neo-tropical migrating birds;
- Completed the greenway linkage for a future trail from Highfields (the former Lindbergh estate) in the Sourlands to connect with the Hopewell greenbelt;
- Led the first phase of public outreach for the 'Crossroads of the American Revolution' study underway by the National Park Service which seeks to identify and protect historic landscapes that illustrate New Jersey's role in the Revolution;
- Established a new temporary home across from the Delaware & Raritan Canal in Griggstown where D&R Greenway can host landowners and partners to advance our goals for open space preservation;
- Completed the first phase of planning for the renovation of the barn on the Greenway Meadows property (the former RW Johnson estate in Princeton), slated to become Greenway's permanent home;
- Expanded our staff to include legal and fundraising professionals whose skills help us to respond to the interests of the community and to Greenway landowners;
- Created a 'Virtual Tour' of the D&R Greenway to illustrate the natural features and Greenway preserves in the region, and to encourage further protection; and
- Received \$341,000 from The William Penn Foundation (WPF) and \$75,000 from the Geraldine R. Dodge Foundation which includes a challenge: For every \$1 contributed to Greenway to support our staff, WPF will contribute another \$1 to be used directly for land preservation.

Please help us meet that challenge in 2002!

Delaware & Raritan Greenway

Donor Recognition

Preserving our Heritage  Protecting our Future

Delaware & Raritan Greenway gratefully acknowledges the many friends and supporters who helped us achieve new levels of accomplishment in land preservation in our communities in the year 2001. In response to Greenway's proactive preservation initiatives, generous supporters increased private contributions by a whopping 186 percent. We are pleased to welcome 449 new donors to the Greenway family—a number we can all be proud of. It is with great appreciation that we thank all of you, especially our long-time and loyal donors who have helped D&R Greenway preserve and protect over 4,500 acres of endangered open space in central New Jersey. 

As of December 31, 2001

LEGACY GIFTS (\$100,000 or more)

Anonymous
Anonymous
Bristol-Myers Squibb Company
Mr. & Mrs. Alexander K. Buck
Community Funds, Inc.-The
Scheide Fund
The Edward T. Cone
Foundation
Friends of Princeton Open
Space
Mr. & Mrs. Ward S. Hagan
Samuel M. Hamill, Jr.
Estate of Roberta F. Holden
Mr. & Mrs. Roddie Klotz
Dr. & Mrs. Timothy Patrick-
Miller
The William Penn Foundation
John & Cindy Reed
Mr. & Mrs. William Schreyer
Mr. & Mrs. John L. Steffens
Mr. & Mrs. Frank E. Taplin, Jr.

ENVIRONMENTAL HEROES (\$50,000 to \$99,999)

Mrs. Micaela de Lignerolles
Geraldine R. Dodge Foundation
Stuart Essig & Erin Enright
Mr. & Mrs. Robert Harris
Mr. & Mrs. Charles Mapes
Tenacre Foundation
Susan & Donald Wilson

GREENWAY LEADERS (\$10,000 to \$49,999)

Mr. & Mrs. John Ager
Anonymous
Francine Besselaar
Mary Owen Borden
Foundation
Mr. & Mrs. Gary Brickner
Catherine D. Brown
Comerica Bank
Mr. & Mrs. Ed Cichurski
Mr. & Mrs. Henry Clancy
Mr. & Mrs. William Coyer

Mr. & Mrs. Desmond Davies
Elizabeth C. Dilworth
Educational Testing Service
Steve Ficarro's Auto Body, Inc.
Boris Fridman
Oliver Frot
Mrs. Walter F. Fullam
Jill Goldman & Larry Richards
Donald Goodrich & Nancy
Dudas
Charles & Mary Louise
Hartman

Mr. & Mrs. Ashton Harvey
Mr. & Mrs. John Healey
Sally Hodder & Adel
Mahmoud
Betty Wold Johnson & Douglas
F. Bushnell
Wendy & Grant Kvalheim
Randal Langdon
Lawrence Township
Conservation Foundation
Mr. & Mrs. Peter Lawson-
Johnston
Mr. & Mrs. Robert Lerner
Sharon & Frank Lorenzo
Mr. & Mrs. Andrew Love
Helen M. Maddock
Mr. & Mrs. Michael K.
Marshall

The Martin Arnold Group, UBS
PaineWebber Inc.
Mr. & Mrs. James Mitchell
Mr. & Mrs. Joseph Mo
North Lawrence Citizens
Association
James & Nora Orphanides
Brian & Lois Perkins
Honesto Poblete
Mr. & Mrs. David P. Prescott
PSE&G
Mr. & Mrs. Jude Rich
Mr. & Mrs. Francois Rigolot
Leon E. & Diane D. Rosenberg
Mr. & Mrs. David Ross
Mr. & Mrs. Marcel Rozencweig
Sierra Foundation, Inc.
Mr. & Mrs. John Slapp
Mr. & Mrs. Menachem
Sternberg

Jonathan Strassberg
Lawrence Sucharow
Rush Taggart & Dorothy
Bedford
Mr. & Mrs. Eric Van Heyst
Williams Gas Pipeline - Transco
Denise Wood & William
Borchert

GREENWAY CONSERVATORS (\$5,000 to \$9,999)

Mr. & Mrs. Henry Acselrod
Hoyt Ammidon, III
AT&T Foundation
Mr. & Mrs. Thomas Byrne, Jr.
Barbara Chancellor
Carol Christofferson & Ed
Tapper
Olivia Cox-Fill
Steven & Brooke Doerler &
family
Eber Dudley & Mark Johnston
Gregory & Diane Eshleman
Murray & Elaine Gilbert
Mr. & Mrs. Daniel R.
Goldenson
Mr. & Mrs. William Hamill
Casey Hegener
Robert & Cynthia Hillas
Mark Honigman
Susan Hoover & Dennis
Connaughton
Dr. Kirk Huckel
Mr. & Mrs. Robert Hunsicker
Helen Hunt
James Kaplan
Elliot & Lily Krauss
Lot 66.08 Partnership
Drs. Burton & Nancy Malkiel
Hella & Scott McVay
William Creed Myers
Thomas & Carol Nied
William Noonan & Dorothy
Butz Noonan
Rao & Sasi Pasupuleti
Mr. & Mrs. Stuyvesant Pell
Mr. & Mrs. Robert Schwartz
Mr. & Mrs. Guy Speciale
Mr. & Mrs. Leo Stinson
Stuart Hill Association

Charles E. Taverner
Melanie Teasley
Bryce Thompson
Mr. & Mrs. Douglas Tunnell
U.S. Trust Company of New
Jersey
Mr. & Mrs. Erik Jan Walson
Andrea Warriner

GREENWAY BENEFACTORS (\$2,500 to \$4,999)

Anthony Arcuni
The David R. & Patricia D.
Atkinson Foundation
Bloomberg L.P.
Uffe & Emily Christensen
The Glenmede Trust Company
James McDonald
Mr. & Mrs. Prakash C. Reddy
Mr. & Mrs. Alexander
Robertson
Schnur Family Fund of the
Jewish Community
Foundation of Princeton
Mercer Bucks
Barbara Vanderkolk
Mr. & Mrs. Jung-Yi Wu

GREENWAY PARTNERS (\$1,000 to \$2,499)

Accel Partners
Winfred & Carol Applegate
Mr. & Mrs. Theodossios
Athanassiades
Angeline Austin
William Carl Baldwin
The Baldwin Foundation
Laurie Barker & Ahmad Moini
Robby & James Begin and
Barbara A. Lee
William H. Bell
Mr. & Mrs. Charles Biddle
Jane Bonthron
Benjamin T. Brickner
John F.V. Carbone
Eloise Caswell & Donald
Chandler
Mr. & Mrs. Philip B. Caton
Charles Jones, LLC
Peter Christensen
Mr. & Mrs. John Clarke

Mr. & Mrs. Deane K. Dayton
Mr. & Mrs. William Dickey
Doerler Landscapes, Inc.
Elizabethtown Water Co.
Mrs. Amos Eno
Ethicon, Inc.
Holly Ferris & Kirk Moldoff
Mr. & Mrs. Thomas Finnerty
Fleet Asset Management
Mr. & Mrs. Frederick L.
Gaskin
Mr. & Mrs. M. David Giardino
Sophie & Curtis Glover
Mr. & Mrs. Richard S.
Goldman

Mr. & Mrs. Mark Hamrick
Alex & Laura Hanson
Alan M. Hershey & Phyllis
M. Frakt
Mr. & Mrs. Philetus H. Holt
Eleanor V. Horne
Florence Hurley
Selden Dunbar Illick
Mrs. Thomas Jamieson
Mr. & Mrs. Eric Jensen
Mr. & Mrs. David O. Johnson
Jamie Kamph
Mr. & Mrs. Kenneth Keisling
Carroll K. King
Sue Kirkland & Mitch
Leibowitz

Kathryn W. Lamb
Mr. & Mrs. Samuel W.
Lambert, III
Janet Lasley & Marc Brahaney
Bernard J. Lechner
Mrs. A. Levadie
Mr. & Mrs. John Loetscher
Peter & Marlene Lucchesi
Charles & Sharyn Magee
Philip W. Marden
Mathematica Policy
Research, Inc.
Brian McDonald
Sally & David Mikkelsen
Rick Miller & Sharon
Lauchaire
Gregory & Linda Millert
Diane Montagne & Andrew
Kulley

Tom & Avril Moore
Pam & Gary Mount
David R. Mueller
Polly & John O'Donoghue
Mr. & Mrs. Stephen H.
Paneyko
Alex & Howie Powers
Mr. & Mrs. Michael Pressel
Susan Quinn & Bernie
Tenenbaum
Mr. & Mrs. William Rankin
John & Anne Rassweiler
Mr. & Mrs. Richard Rosen
Fred Slivon
Smith, Stratton, Wise, Heher &
Brennan
Earl K. Snedeker
Mr. & Mrs. Michael Spicer

Lisa & Bob Stockman
Mr. & Mrs. D. Hunt
Stockwell, Jr.
Linda & Bill Swain
Mary C. Tanner
Mr. & Mrs. Jesse Treu
Mr. & Mrs. Ramsay Vehslage
Thomas L. Waldron
John R. Weingart & Deborah
Spitalnik
The Whole Earth Center
Mary O. Witherbee
Dr. Peter J. Wojtowicz
Mr. & Mrs. Philip Yang

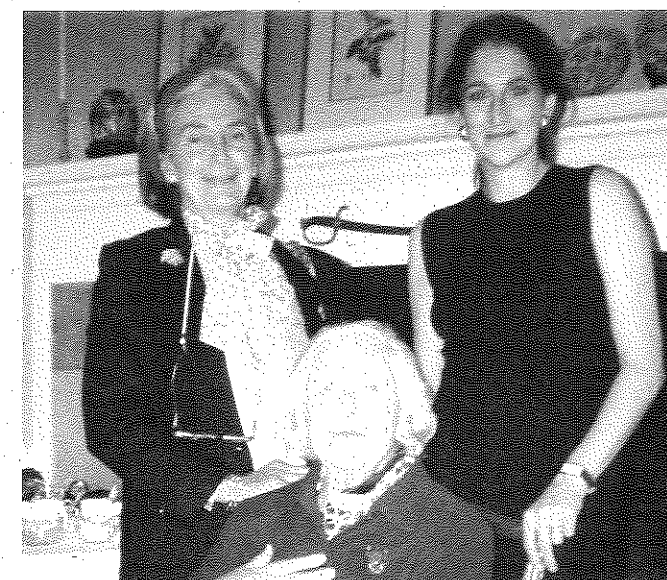
TRIBUTARY DONORS (\$500 to \$999)

Mr. & Mrs. James Amon
Don & Ruth Barringer
Ira & Debra Baseman
Peter & Wendy Benchley
Rosemary & David Blair
Sheila Bodine
Lucille Bongiovanni
William D. Bridgers &
Debra Weir
Barbara L. Brizzee & John
T. Hunt
Mr. & Mrs. Nathaniel Burt
Mr. & Mrs. Horace Chandler
Mr. & Mrs. Milton
Charbonneau
Beryl Collins
Joyce M. Copleman
Mr. & Mrs. Peter Eaton
Mrs. Brooks Emeny
Mr. & Mrs. Peter E. B. Erdman
Dr. Parvin Saidi Farmanfarmain
& A. Farmanfarmain
Fleet Bank
Mr. & Mrs. Moore Gates, Jr.
Karen Gordon & Fred Cooper
Mr. & Mrs. Raymond Hallows
Mr. & Mrs. John Heffern
Kathi & Kurt Hoffman
Dr. & Mrs. Henry Horn
Mr. & Mrs. David Huse
James S. Irish
Jacquelin Foundation Fund of
the Princeton Area
Community Foundation
Janssen Pharmaceutica
Products, L.P.
Bob & Lynn Johnston
Mr. & Mrs. Robert Jones
Nancy & Stephen Jusick
The Kaltman Family
Catherine Knight & Dr. Donald
F. Denny, Jr.
Mr. & Mrs. Joseph Kossow
Mr. & Mrs. Leighton Laughlin
Lawrence Historical Society
Beverly Fichera Lester &
Robert Lester
Mary C. Lincoln
Ann & Michael Mantell
Mr. & Mrs. Edward E.
Matthews

Mr. & Mrs. Gene McHam
Middlesex Water Company
Miele, Inc.
Mr. & Mrs. Bradford Mills
Mary Jean & Joe Mollica
JoAnn & Tim Munoz
Mr. & Mrs. Vincent
Noonan, Jr.
Mr. & Mrs. Charles J. O'Brien
Matthew Pickens
Dr. & Mrs. Robert Pickens
Mr. & Mrs. John A. Pitarresi
Judith Pollack & James Ohls
Jay & Amy Regan
Hollis Robbins & Michael
Rothman
Dr. & Mrs. Lester Robbins
Mr. & Mrs. Thomas P.
Roddenberry
Steven & Sally Schroeder
E. K. Snedeker, Jr.
Amanda & Bill Stanton
Mr. & Mrs. Albert Stark
Barry & Marilyn Steiner
Elizabeth Stetson
Joseph & Janice Stonaker
Richard Switlik, Sr.
Mr. & Mrs. Christopher Tarr
Mr. & Mrs. Denis Taura
Megan E. Thomas & Robert
M. Olson
Mr. & Mrs. Robert Trelstad
Neil & Mimi Upmeyer
Mr. & Mrs. George Vaughn
Mr. & Mrs. Derek Weatherill
Mr. & Mrs. F. Helmut Weymar
Mr. & Mrs. Van Zandt
Williams, Jr.
Mr. & Mrs. John J. Wise
Mr. & Mrs. Edwin W. Wislar
Judith Yaskin

WOODLAND DONORS (\$250 to \$499)

Charles A. Alden
Barbara J. Andrew & Gerald
P. Seid
Dr. & Mrs. James Barnshaw
Steven & Kathy Benner
Peg Benton
Geraldine Boone
B.J. and Kevin Booth
Mr. & Mrs. Charles Carmalt
Tom & Adele Cawley
Mr. & Mrs. Edward Crane
Mr. & Mrs. Daniel Cuoco
Mr. & Mrs. Richard De Falco
Mr. & Mrs. Robert Del Tufo
Barbara & Roy Dollard
Dr. & Mrs. David Dondero
Drinker Biddle & Shanley
Ed Driver
Sue, Robert, Samuel &
Callum Dupre
Mr. & Mrs. Stephen Fillo
Mr. & Mrs. Allen Fisher
Julie Fox & Albert Gates
Col. & Mrs. James J. Freda
Jack & Bev Gallagher
Garden Club of Princeton
Mr. & Mrs. Paul Gerard
Mr. & Mrs. Fred Goldstein
Jay Gompper
Toby Goodyear & Gerald
Neary
Mr. & Mrs. Doug Green
Lawrence F. Guidi, Jr.
Gordon & Llura Gund
Robert B. Hargraves
Mr. & Mrs. Thomas Harvey
Betsy Hely & Bruce Simon
Mr. & Mrs. Blake Henry
Peter Hegener
Mr. & Mrs. Lincoln Hollister



Three generations of landowners attending the Landscape & Architecture Gala for the Greenway at Willow Gate, preserved by hosts Deborah and Erik Jan Walson

Mr. & Mrs. Michael Johngren
Mr. & Mrs. Glenn R. Johnson
Mr. & Mrs. Michael G. Johnston
Dr. & Mrs. Steven Kahn
Mr. & Mrs. Philip Kirstein
William Kurtz
Mary & Charles Leck
Dawna Lemaire & Scott Burnham
Donna Lewis
Mr. & Mrs. Andrew Littauer
Melinda & Charles Martinson
Candace McCoy
Elizabeth S. Murray
Michael & Elyse Newhouse
Charlotte & Pat O'Connell
Mr. & Mrs. Stephen Parrish
Henry S. Patterson, II
Mr. & Mrs. Richard Pennington
Ralph F. Peters
Mr. & Mrs. Michael Peterson
Michael Powers & Mark Sebastian
Frances L. Preston
Princeton Junction Engineering, P.C.
Edward J. Raser
Ann Reichelderfer & Doug Blair
Bill & Jeanine Rosen
Beverly Rubman & Mark Goldfus
Mr. & Mrs. Mark Rudnick
Mr. & Mrs. George Sands
Mr. & Mrs. John Sayer
Patricia Sayles
Joseph Schmeltz
Mr. & Mrs. Thomas Seessel
Mr. & Mrs. John Sienkiewicz
Mr. & Mrs. Frank Sinden
James R. Snyder
Dr. David L. Spanel

Donald Stryker, Diane Gruenberg & Sarah Stryker
Caren Sturges
James & Jane Swift
Patricia Tee & Alan Dunton
Judith L. Teller
Mr. & Mrs. Edward D. Thomas
John L. Thurman
Susan B. Travers
Mr. & Mrs. James Trowbridge
Mr. & Mrs. Jeffrey M. Tuder
Jeffrey D. Vernam
Barbara & Peter Westergaard
Eileen White & Greg Diamond
Mr. & Mrs. John Williams
Cliff & Louise Wilson
Kate Winton
Mr. & Mrs. Mitsuru Yasuhara

TRAIL DONORS (\$150 to \$249)

Mr. & Mrs. Lewis Arno
Edward E. Atoeff
Dan Auslander & Molly McDougald
Maxine Baicker
Banish Associates, Inc.
Dr. Betty Barcevac
Mr. & Mrs. Stanley C. Baron
Maria Benito-Herrero & Stephen Griffies
Helena & Peter Bienstock
Dorothy Wells Bissell
John & Gloria Borden
Helen R. Cannon
Mr. & Mrs. George J. Carcagno
Wayne Carlson & Ellen Hoenig-Carlson
Dr. Shirley Suiling Chan & Dr. Robert H. Austin
Mr. & Mrs. Robert Chandler
Dr. & Mrs. Theodore Chase, Jr.
Mr. & Mrs. Bruce Coe
Philip S. Collins
Andrew J. Cosentino

R.A. Curini Appraisal Co., Inc.
The Cutler-Kreutz Family
Mr. & Mrs. William DeMeritt
Jane R. & Charles P. Dennison
Liza & Pepper deTuro
Eden Institute Foundation
Mrs. R. Kenneth Fairman
Peter & Shaness Farrell
Mr. & Mrs. John Flemming
Mr. & Mrs. Jeremiah Ford, III
Ford Farewell Mills & Gatsch
Elizabeth Lynn Frazee & Theodore P. McNulty III
Mr. & Mrs. Brian Fullerton
Bruce Gage & Joan Van der Veen
Ruth & Lloyd Gang
Mr. & Mrs. Carl Gensib
Dr. Alexandra Gerry
Peter G. Gerry
Eugene Gladston
Evann Gleeson
Mr. & Mrs. Bruce Godfrey
Mr. & Mrs. Madan Goel
Dr. & Mrs. Robert F. Goheen
Ford & Katherine Graham
Barbara M. Greer
Mr. & Mrs. Larry Grisham
Mr. & Mrs. Everett D. Gross
Mr. & Mrs. Peter Grosz
Helen D. Hamilton
Louise Handelman
Patricia Haneline & Alan Kozikowski
Mr. & Mrs. Eugene M. Haring
John & Margaret Harper
Daniel A. Harris
Mr. & Mrs. Robert F. Hendrickson
Mr. & Mrs. William Herbert
Pam Hersh-Princeton University
Liz Highley
Dr. & Mrs. Gavin Hildick-Smith
Jeannine Hofmann
Representative Rush Holt & Dr. Margaret Lancefield
Mr. & Mrs. Hallett Johnson, Jr.
Mr. & Mrs. Landon Jones
Stephanie B. Jones
Peter Josten
Mr. & Mrs. Charles King
Benjamin B. Kirkland
Carol Kleis & Rex Parker
Mr. & Mrs. Barclay J. Knapp
Ludwig Koerte
Denise Koetas-Dale & William Koetas
Anton & Alison Lahnston
State Senator Leonard Lance
Lee Lauchaire
Lynn Lederer & Peter Johnson
Cate & Jim Litvack
Mr. & Mrs. David Loevner
Mr. & Mrs. Dan Longhi
James Luce
Mr. & Mrs. Sabry Mackoul

Dr. & Mrs. David C. Marshall
Lisa & Kurt Marttila
Maser Consulting P.A.
Mason, Griffin & Pierson, P.C.
Mr. & Mrs. Carmelo Mauro
Mill Roofing
Mr. & Mrs. Robert Mintz
Glenn Mohrman
Mr. & Mrs. John Mulvey
Chiara Nappi & Edward Witten
Susan Naquin
Kim Augustus Otis
Martin Padovani
Mr. & Mrs. Peter Paine
John & Dee Patberg
Mr. & Mrs. Edward Percarpio
Mr. & Mrs. Tod S. Peyton
Mr. & Mrs. John Phelan
Pinto and Butler
Jane & Tom Poole
Mr. & Mrs. Warren Powell
Dorothy K. Powers
Mr. & Mrs. Peter W. Radice, Jr.
Mr. & Mrs. Michael Rapoport
Peter N. Rayner
Mayor & Mrs. Marvin Reed, Jr.
Mr. & Mrs. Philip D. Reed, Jr.
Richard & Jill Reid
Mr. & Mrs. William Robins
Roma Federal Savings Bank
Robert Ruliffson
John Sabino
Gregory & Elizabeth Samios
Mr. & Mrs. Larry Sanford
Mr. & Mrs. Carter Sednaoui
Joan Semenuk
Hal & Janie Shute
Stephen M. Skoczylas
Mr. & Mrs. Austin C. Starkey, Jr.
Gustav L. Stewart, III
Edmund W. Stiles & Michele S. Byers
Marie Louise Stokes
Heather Swartz
Mr. & Mrs. Stowe Tattersall
Robert Tomaselli & Michael Dawson
Triassic Technology, Inc.
Alan & Mindi Turin
Susan D. Ultan
Van Cleef Engineering Associates
Donald Vandegrift
Mr. & Mrs. Terrence Wadsworth
Margaret C. Wallace
Mary Weeden
Scott Weiner
Mr. & Mrs. Alexander Wert
Mr. & Mrs. Thomas R. Wilkinson
Amelia Willson
Bob & Barbara Wolfe
Sam & Johanna Woodworth
Mr. & Mrs. Jay Wrobel
Mr. & Mrs. Robert Zagoria



Key players at the closing of Carson Road Woods in Lawrence Township

WILDFLOWER DONORS (\$100 to \$149)

George Amick
Clinton Andrews
Mr. & Mrs. Andrew Armstrong
Dr. Jean Pierre Arnoux
Mr. & Mrs. Paul Babicki
Susan Bachus
Lynn Baranski
Melba Battin
Mr. & Mrs. Peter Baughan
Mr. & Mrs. Roger Bergquist
Mr. & Mrs. Leonard Berlik
Mr. & Mrs. Jay Biggins
Louise Blodgett
Mr. & Mrs. J. Douglas Breen
Mr. & Mrs. David Breithaupt
Terry Brown
Barbara D. Buermeyer
Mr. & Mrs. John Burghardt
Mr. & Mrs. Charles H. Burkman
Steve Buyske
Leslie Campbell & Mark Zaininger
Mr. & Mrs. Frank Carolan
Mr. & Mrs. Neil Citrone
Thomas Clarkson
Janet Tom Collins
Colette A. Coolbaugh
Lynn Coopersmith
Mr. & Mrs. Donald Coppola
Mr. & Mrs. Walter S. Corson, Jr.
Eve Coulson & Nelson Obus
Margaret W. Cross
Lila J. Cruikshank
Patricia A. Cullen
Mr. & Mrs. Fred Dailey
Thomas Dallesio
Mr. & Mrs. Dennis Davidson
Mr. & Mrs. Craig Deardorff
Mr. & Mrs. John de Grouchy
Isabella de la Houssaye & David Crane

Mr. & Mrs. William Doerler
Dr. & Mrs. R. Gordon Douglas, Jr.
Mr. & Mrs. David Dufresne
Friedrich Dursch
East Amwell Environmental Commission
Mr. & Mrs. Thomas Ebeling
Verena Edwards
Dr. & Mrs. Jan Egberts
Kay Fairbanks
Elaine Fantham
Jacquelyn Fay
Mr. & Mrs. Clem Fiori
Mr. & Mrs. William Fogler
Steven Frakt & Marlaire Lockheed
Jeffrey G. Furey
Mr. & Mrs. Alec M. Gallup
Mr. & Mrs. Thomas Gates
Mr. & Mrs. William L. Gates
Robert & Evelyn Geddes
Charles Gillispie
Mr. & Mrs. Richard A. Ginman
Diane J. Goff
Mr. & Mrs. Graham Goldsmith
Mr. & Mrs. Carl Good
Mr. & Mrs. George Goodman
Mr. & Mrs. Robert Gottlieb
Assemblywoman Linda Greenstein
Joseph H. Greer
Assemblyman Gary Guear
Jill & John Guthrie
Mr. & Mrs. Randall Hack
Elizabeth B. Hagedorn
Mary Margaret Halsey
Lynne Harkness & Vincenzina Di Falco
Mr. & Mrs. Arthur Harvey
Mr. & Mrs. David Harwood
Maximillian Hayden
Dr. & Mrs. William Haynes
Mr. & Mrs. Richard Henkel
Mr. & Mrs. Robert Hoffman
Mr. & Mrs. Paul Hofreiter

Mr. & Mrs. Peter Hoover
Mr. & Mrs. Peter Hughes
Mr. & Mrs. Adrian Huns
Mr. & Mrs. Robert Isham
Dr. Daniel K. Jass
Rev. MaryAnn Jensen
Erica Johanson
Mr. & Mrs. Livingston Johnson
Mr. & Mrs. Robert C. Johnston
Beverley Jones
Mr. & Mrs. Charles Jones
Peter Jungblut
Drs. Robin & Gary Karpf
Mr. & Mrs. Haig Kasabach
Adam Kaufman
Mr. & Mrs. Andrew King
David N. Kinsey
Kenneth H. Klipstein
Mr. & Mrs. Patrick Kreger
Mr. & Mrs. Barton Kreuzer
Nancy Kriegner
Mr. & Mrs. Chris Kuenne
John & Eleanor Kuser
Steve Laubach
League of Women Voters
Mr. & Mrs. Simon Levin
Mr. & Mrs. R. Todd Lincoln
Walter H. Lippincott
Mr. & Mrs. Joseph Logan
Mr. & Mrs. Christopher Long
John & Jackie Lopez-Ona
Laura Lynch
Mr. & Mrs. Roland Machold
Wendy Mager & Eric Monberg
Mr. & Mrs. Michael Mathews
Mr. & Mrs. Gregory E. Matthews

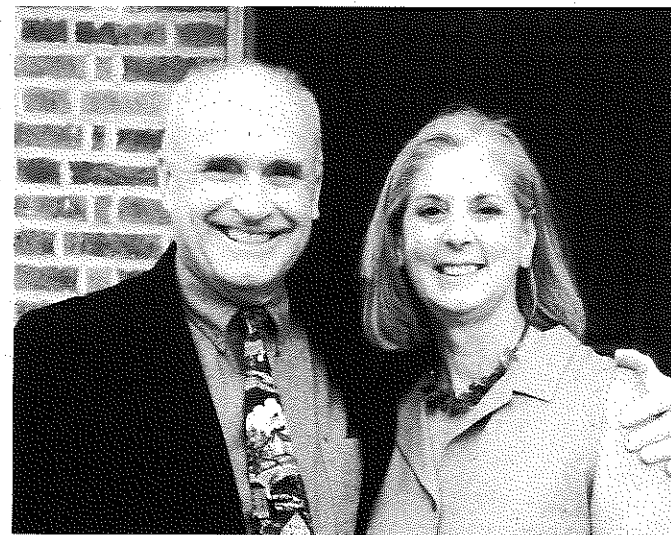
Lisa Mazzone
Rev. & Mrs. David H. McAlpin, Jr.
Dr. & Mrs. T. J. McNeill
Frances M. Merritt
Susan Michniewski
Mr. & Mrs. McKinley Miller
Robert B. Miller
Mr. & Mrs. Robert More
Paula Morgan
Mr. & Mrs. A. Perry Morgan, Jr.
Mr. & Mrs. Paul B. Mott, Jr.
Mr. & Mrs. Julian Moynahan
Winona Nash
Bob Neise
Greenie & Ned Neuburg
Marsha Novick
Mr. & Mrs. Harry Olson
Dr. & Mrs. William H. Olson
Ono Pharma USA, Inc.
Mr. & Mrs. William H. Osborne, III
Mr. & Mrs. Steven Ott
Mr. & Mrs. Joseph Parsons
Jean Alison Peebles
Bonnie Piper & Gregory Ordonez
George Pitcher
Elyse Plunid & Norman Glickman

Katie W. Poole & Howard H. Tomlinson
Lucile Proctor
Mr. & Mrs. K. R. Ramaprasad
David C. Reeve
Mr. & Mrs. Eric Regh
Lois A. Richard
Lois Riskin
Leon M. Rosenson
Diane Ruble & Dr. William M. Green
Mr. & Mrs. Jeffrey C. Salton
Mr. & Mrs. Kenneth S. Samoil
Paul Schindel
Anne McBride Schreiber
Helmut Schwab
Roger M. Schwarz
Jane Scott & Taysen Van Itallie
Inez & Richard Scribner
Dr. & Mrs. Daniel W. Shapiro
Mr. & Mrs. John Sheats
Mr. & Mrs. Robert Siani
Dr. Myrna L. Soriano
William P. Starr, Jr.
Mr. & Mrs. Donald Stuart, III
Mr. & Mrs. Michael Suber
Dorris P. Suppers
Martha Stocking Swanson & Len Swanson

Paul Taylor
Mr. & Mrs. Greg Temple
Frederick E. Tetzeli
Mr. & Mrs. Raymond Thompson
Ron Tindall
Judy, Melody & Charles Ting
Roger S. Tobie
Kathryn Trenner
Mr. & Mrs. Daniel Tsui
Mr. & Mrs. Carlton Tucker
Peg Van Patton
Lee & Melinda Varian
Mr. & Mrs. Jay Vawter
Adele Vexler
William & Dorothy Wardell
Jonathan P. Weiss
Sylvia C. Weld
Mr. & Mrs. Thomas Wilfrid
Mr. & Mrs. David Wilkinson
Mary S. Wilson
Mr. & Mrs. Ernest Winter
Ariana Wittke
Mr. & Mrs. Lucien Yokana
Mr. & Mrs. Matthew Young
Virginia Zakian & Robert Sandberg
Carolyn Zangara & Kevin Psarianos

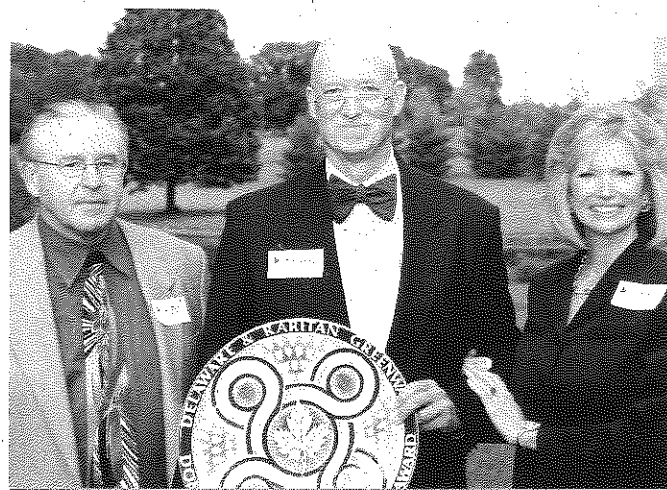
MAPLE LEAF DONORS (\$50 to \$99)

Mr. & Mrs. Ernest Anastasio
Ilonka Angalet
Nicholas Angarone
Mr. & Mrs. Howard L. Arnould
Mr. & Mrs. Stuart Azarchi
Mr. & Mrs. Rod Bass



Lester and Barbara Robbins celebrate the protection of their Robbinsville property

Mr. & Mrs. Louis R. Beck, Jr.
Joleen Benedict
Mr. & Mrs. Gerald Berkelhammer
Kathleen Bird
Ruth A. Blattenberger
Michael P. Bolan
Nancy & Tom Breden
Barbara P. Broad
Mary Nelson Brown & John A. Brown, Jr.
Olive S. Brown
Dr. Janice Bush & Dr. Eric Hagestad
Timothy Byrne
Mr. & Mrs. David Calabro
Ann Cannon
Mr. & Mrs. Phil Carlson
Julie Carman
Mrs. Rene Carrillo
Mr. & Mrs. David Carter
Dr. & Mrs. James J. Chandler
Mr. & Mrs. Richard Chrisman
Stacey C. Cibelli
Barbara Clements
Mr. & Mrs. Whitney Cookman
Mr. & Mrs. Peter L. Cooper
Virginia Craig
Emily Croll & Clifford Zink
Michael Cucinotta
Mr. & Mrs. Tony Culmone
Mr. & Mrs. Robert Dalle Paze
Sara Davies
Helge Staby Deaton
Mr. & Mrs. Alejandro Diez
Cynthia Dixon & Stephen Highcock
Mr. & Mrs. Richard Dodds
Mr. & Mrs. Norbert Donelly
Mr. & Mrs. Richard A. Dutko
Elizabeth L. Ebel
Drs. Joan & David Ehrenfeld
Mr. & Mrs. Zvi Eiref
Jack Ellis
Mary Enright & David Carroll
William Enslin



Bill and Linda Swain receiving the Donald B. Jones award with Greenway chair Neil Upmeyer (center)

Mr. & Mrs. Morris Fabian
Fran Ferrone
Mr. & Mrs. Dudley Fitzpatrick
Betty & Robert Fleming
Mr. & Mrs. Klaus Florey
Branka & Neville Ford
Mr. & Mrs. Mark Freda
Mr. & Mrs. Robert Gargiullo
Nancy Genung
Annette Giordano
Stefan W. Goff
Elizabeth Goheen
David Goldfarb
Dr. & Mrs. Thomas Gorrie
Evelyn, Spud & Leah Grammar
Mr. & Mrs. Richard Gratton
Wendy Grohol
Lawrence Gustin
Mr. & Mrs. Carl Haag
Township of Hamilton
Sheila Handel
Jean Harrington
Benjamin Hart, Jr.
Harriette Hawkins
Mr. & Mrs. Kenyon Hayes
Michael E. Heenehan
Mr. & Mrs. Isaac M. Held
Mr. & Mrs. David Herbst
Lee W. Herrick
Lois B. Hilimire
Mr. & Mrs. Albert Hirschman
Mr. & Mrs. Henry Hoffman, Jr.
Township of Hopewell
Mr. & Mrs. Oliver Houghton
Mr. & Mrs. Nat Howe
Mr. & Mrs. Michael Hurley
Mr. & Mrs. John W. Jacobson
Barbara Johnson
Maryann Kampmann
Michael Kerr
Virginia W. Landgraf
Tom Ledwith
Mr. & Mrs. Milton Levin
Mr. & Mrs. Harry Levine
Mr. & Mrs. Andrew Link
Mr. & Mrs. Daniel Lister

Eileen Marin
Linda Materna & Tom Newman
Dorothy Matsui
Mr. & Mrs. Kenneth Maugle
Timothy M. McCann
Mr. & Mrs. Frank McDougald, Jr.
Maria McGann
David McGrail
The McGrath Pharmacy
Suzanne McSorley & Thomas Baker
Mr. & Mrs. Seymour Meisel
Mr. & Mrs. John Merritt, III
Nancy Miller
Mr. & Mrs. Joshua Milstein
Mr. & Mrs. Warren Mitchell
Mr. & Mrs. William Moody
Paul Muldoon & Jean Hanff Korelitz
Mr. & Mrs. James Nowicki
Linda Oppenheim & Robert Karp
Dr. Susan B. Packer
Ruth Palmer
Tari L. Pantaleo
Amy Pearlmuter & James Andrews
Jeanne Perantoni
Judy Perrine
Dolores A. Phillips
Dr. & Mrs. Gerald L. Picard
Barbara Prince & Barry Sagotsky
Andrea Rabel
Adam Ratner
Diana M. Reid & Robert M. Beals
Mr. & Mrs. Keith Reid-Green
James Richardson
Helen Ringus
Janet E. Robbins & Gary C. Woodward
Mr. & Mrs. David Robertson, Jr.
Mr. & Mrs. Raymond Rosen
Barbara T. Ross
William J. Ruggero & Jacqueline A. Davie-Ruggero
Mr. & Mrs. Norman Russell, Jr.
Mr. & Mrs. Jon Salmon
William Schluter
Mr. & Mrs. Carl Schorske
Mr. & Mrs. Charles Schwartz
Mr. & Mrs. Stuart Schwartz
Mr. & Mrs. David C. Scott
Mr. & Mrs. Howard Seidman
Mr. & Mrs. Thomas H. Shelley, III
Dr. & Mrs. Owen A. Shteir
Denise Shungu
Rachelle Simon & Ned Wingreen
David E. Smith
James B. Smith
Mr. & Mrs. Raymond J. Smith
Aurelle Sprout & James Hake

Suzanne Stahl
Sandra Tait & Hal Foster
Althea S. Thornton
Carl Thune
Roul Tunley
Tony Turrin & Kelly Smith
Misses Irene & Marion Updike
Marian van Buren
Mr. & Mrs. Brad Van Treuren
Le Roy E. Warren
Marianne Waterbury
Trishka Waterbury
Alex & Barbara Waugh
Martha Weinstein
Ruth Wells & Gary Lapera
Carol Ann Welsch & Allen Brown
Miquelon L. Weyeneth
Eileen Wigner
Elena Williams
Julie Willmot & Jeff Wagner
Ruth & Nick Wilson
Inge Wimmers
Mr. & Mrs. Mark R. Witmer
Elizabeth Zaic

FRIENDSHIP DONORS

Jean Aller
Anonymous
Jennifer Arrowsmith & Ryan Stansfield
Susan K. Attix
Carleen M. Baily
Mr. & Mrs. Christopher Baldwin
Louise Baratta
Linda J. & Robert H. Barth
Mr. & Mrs. Duane E. Bath
Nancy G. Beer
Dr. Robert Berkowitz
Mr. & Mrs. Alan Bilanin
Raymond J. Blicharz
Mr. & Mrs. Martin Bloomenthal
Melissa Bohl & Ronald Sverdllove
Drs. Arlene & Stephen Bowes
Mr. & Mrs. Richard Braverman
Nadeene Brunini
Jack Burns
John F. Cantilli
Joseph P. Capalbo
Tracy & Paul Carluccio
Mary Ellen Carson
Mr. & Mrs. Andrew Carstensen
Mr. & Mrs. Joseph Ciarka
Jack & Ronnie Cimprich
Mr. & Mrs. James Cleak
Mr. & Mrs. Robert Cleary
Mr. & Mrs. Larry Coffey
Richard M. Cohn
Barbara J. Conover
Maura Coughlin & Mark Kelly
Mr. & Mrs. Charles Greesy
Priscilla Damiani
James J. D'Arcy
David Davies
Mr. & Mrs. Joseph Debellis



Happy donors at a press conference announcing preservation of the former Robert Wood Johnson estate, renamed 'Greenway Meadows'

Eloise H. DeFalco
Mr. & Mrs. John Delaney
Delaware Valley Regional Planning Commission
Christie & Jamey Deming
Roslyn & Norman Denard
Mr. & Mrs. John H. Denny, Sr.
Nancy & John Derrico
Janice DiClaudio
Mr. & Mrs. Archibald Douglas
Township of East Amwell
Jessie M. Ebischbach
John Edge
Joanne Elliott
Mr. & Mrs. John Ellis
Jeanne B. Epstein
Mr. & Mrs. Peter Esposti
Mr. & Mrs. Robert Faherty, Sr.
Dr. Coralie Farlee
Mr. & Mrs. Joseph Feinberg
Lesley McKillop Feldstein
Mr. & Mrs. Charles Fisher
Janet Fittipaldi
Mr. & Mrs. George Fluck
Mr. & Mrs. Douglas Forer
Mr. & Mrs. John Franzini
Dr. & Mrs. Stuart Freedendfeld
Kim Friend & Michael Ward
Thomas Fulmer
Ruth Gibson & Dottie Dreas
Mr. & Mrs. Joseph A. Giordmaine
Mr. & Mrs. William Golden, Sr.
Mr. & Mrs. R. Jack Graham
Mrs. James C. Gray
Great Swamp Watershed Association
Fred & Barbara Greenstein
William Gross
Claudia Guenther
Lee & Robert Gunther-Mohr
Ira Guterman
Mr. & Mrs. James Haba
John P. Hanley
Mr. & Mrs. James Harford
Mr. & Mrs. Roger Harris
Mr. & Mrs. Mark W. Holmes
Wendy & Arthur Hopper

Mr. & Mrs. James M. Howie
James Hritz
Janet Hubbard & Chris Lahoda
Mr. & Mrs. James W. Hughes
Robert & Mary Hulme
Lynn F. Hunt
Mr. & Mrs. Ivan Ivahnenko
Robert Jackson
Erik Jalajas
Lorayne Jenkins
Douglas Kane
Mr. & Mrs. William J. Kane
Saul D. Kanter
Martin & Dorothy Katz
Edith Kawano
Mrs. John H. Keating, Jr.
Mr. & Mrs. Henry A. King
Sylvia & Koke Kokatnur
William Krisak
Katherine Krupinski
Esther LaFranco
Laurie Larson
Will Lieberman
Mr. & Mrs. James Lustenader
Mr. & Mrs. John MacChesney
Peter Macholdt
Dr. & Mrs. Winton Manning
Marguerite C. Martin
Robert Mason
Mr. & Mrs. Timothy McGrath
Peggy McNutt
Richard McNutt
Mr. & Mrs. Charles T. McVicker
Annette Merle-Smith
Leland G. Merrill
Mr. & Mrs. Jonathan M. Metzger
Frank Middleton
Kerry Miller
Susan Miller
Lynni & Maung Min
Ronald Monaco
Margaret Morgan
Mr. & Mrs. John P. Moroze
David H. Morris
Doris Mount
Karol Nawarynski

Mr. & Mrs. Louis D. Nepote
Eve Niedergang & Andy Weiss
Ocean County Board of Agriculture
Mr. & Mrs. Philip Osborne
Mr. & Mrs. Andrew Outerbridge
Peter Palaitis
Dr. & Mrs. Donald E. Parlee
Mr. & Mrs. R. William Pauley
Mr. & Mrs. Michael Pettola
Mr. & Mrs. John R. Piazza
Joanne Pizza
Township of Plainsboro
Mr. & Mrs. Allen Porter
Mr. & Mrs. Karl Posselt
Carol A. Prykanowski
Patricia Orban Quinby
Martin Rapp
Denyse Reid
Mr. & Mrs. Michael Reiss
Margaret Bush Riccardi
Timothy Riegert
Mr. & Mrs. N. J. Rieur
Mr. & Mrs. Victor Rizzo
Mr. & Mrs. Denny Rodgers
Mr. & Mrs. William R. Rossmassler
Mr. & Mrs. Steven Rowley
Mr. & Mrs. Paul Sauerland
Albert Schaufler
Mr. & Mrs. James J. Schulz, Jr.
Michael Schuman
Anne N. Shapiro
Mr. & Mrs. Edwin S. Shecter
Patricia Sheridan & Mark Herzberg

Agnes Sherman
Jenny Shinkfield
Mr. & Mrs. Joseph Sieger
Elliott & Ruth Sigal
Dr. Norman J. Sissman
Mr. & Mrs. Craig Smith
Gale M. Smith
Lillian Snyder
Mr. & Mrs. William A. Stoltzfus, Jr.
Janice Stone
Mr. & Mrs. Richard Stothoff
Mr. & Mrs. James Sturm
Hannah B. Suthers
Carl Swanson
Patricia Szathmary
Mr. & Mrs. Raymond Sziber
Mr. & Mrs. Larry Tatsch
Mr. & Mrs. James Thompson
Grenelle B. Tompkins, Jr.
Mr. & Mrs. Frank Torpey
Mr. & Mrs. Michael Toto
Mr. & Mrs. Herbert Tritremmel
Mr. & Mrs. Philip Tunison
Mr. & Mrs. Charles W. Ufford, Jr.
Mr. & Mrs. Matthew L. Visco
Lois Voronin
Alison J. Walstedt
Carolee Watkins & Daniel Noonan

Mr. & Mrs. Torry Watkins
Paul Weber
Mr. & Mrs. Henry Weiss
Mr. & Mrs. Russ Weiss
Richard Williams
C. Norman Woerner
Mr. & Mrs. Charles Woodford
W. M. Wright
Jean Zelinsky
Mr. & Mrs. John Zipper
Karen Fanta Zumbrunn
Virgene E. Zumbrunn

MEMORIAL GIFTS

In memory of Jessie Barcevac: Betty Barcevac
In memory of Louis Bodenheimer: Roul Tunley
In memory of Rowan Boone: Geraldine Boone
In memory of Denise Collins: William Gross
In memory of Madge Dey: Virginia Craig
In memory of Helen Fagan: Virginia Craig
In memory of Walter Fullam: Dr. & Mrs. James Barnshaw
In memory of Rex Goreleigh: Verena Edwards
In memory of Jack Green: Evann Gleeson
In memory of Sarah S. McAlpin: Gustav L. Stewart, III
In memory of David T. Morris: David H. Morris
In memory of Iona Fackler Myers: William Creed Myers
In memory of Anabele & George Post: Mr. & Mrs. N. J. Rieur
In memory of Jim Powers: Dorothy K. Powers
In memory of Elsie Purdy: Aurelle Sprout & James Hake
In memory of Frank Reisman: Chip & Marilynn Carstensen
In memory of Lee Tetzeli: Jill & John Guthrie, Frederick E. Tetzeli, Sylvia C. Weld
In memory of George & Frances Young: Mr. & Mrs. Matthew Young

HONORARY GIFTS

In honor of Moore & Audrey Gates: Mr. & Mrs. Thomas Gates
In honor of the marriage of Bob & Grace Johnston: Suzanne McSorley & Thomas Baker, Marsha Novick, Ann Reichelderfer & Doug Blair, Chris & Sue Tarr
In honor of David Prescott: Mr. & Mrs. Kenyon Hayes
In honor of Bill Swain: Dorothy K. Powers

MATCHING GIFTS

3BM Television Limited
Celanese Americas
Foundation, Inc.
Demag Delaval
Turbomachinery Corporation
Geraldine R. Dodge
Foundation, Inc.
ExxonMobil Foundation
IBM International Foundation
The Robert Wood Johnson
Foundation
Merrill Lynch & Co.
Foundation, Inc.
Mobil Foundation, Inc.
The J.P. Morgan Chase
Foundation
National Starch and Chemical
Foundation, Inc.
Vivendi Universal US
Holding Co.

IN-KIND DONATIONS

Acadia Marketing & Design
The Balloonlader & Stephanie
Anitore
Kem & Paulo Barbosa
Elizabeth Baughan
Peg Benton
Anita Bernarde
Cindy Besselaar
Dorothy Wells Bissell
Rosemary Blair
Lucinda Brockway
Jeanne Calo
Donna Case
Tom Cawley
Central Lewmar/PickQuick
Papers, Inc.
Carol Christofferson
The Classic Dessert Company
Wendell Collins
Consolidated/Drake Press
Corkscrew Wine Shop
Rhys H. Craver, Jr., Prism
Color Corporation
Betty Curtiss
Peter Dawson
Drinker Biddle & Shanley LLP
Ebet Dudley
Rick Dutko
Educational Testing Service
Elric Endersby
Clem Fiori
Miriam Friend
Francis Fullam
Christine Gadekar
Helen Gallagher
Katie Gardner
Sophie Glover
Richard S. Goldman, Esq.
Shelley Goldsmith
Karen Gordon
Carol Hanson
Millie Harford
Chuck & Mary Louise
Hartman
Ashton Harvey

Hal Haveson, Esq.
Haveson & Otis
Bart & Cindy Hoebel
The Hun School
Italian Peoples Bakery & Deli
Margaret Kennard Johnson
Robert C. Johnston, Esq.
Marie H. Katzenbach School
for the Deaf
Nancy Lee Kern
Marcus R. Knowlton
Wendy Kvalheim &
Mottahedeh Gallery
Judy Lavrich
Mary Leck
Warren Libensperger
Elizabeth Lombardi
Mahlon & Heather Lovett
Marlene & Peter Lucchesi
Wade Martin & Princeton
Garage
Frank Masi, Jr.
Rev. & Mrs. Charles
McCullough
Frank & Martha McDougald
Jeanne Pasley Messer
John D. Mitchell
Tom & Avril Moore
Bob & Sandra More
John Nevers & Nassau
Helicopters
Kim Augustus Otis, Esq.
John & Carrie Pallat
David & Peggy Prescott
Princeton Online
Princeton University Press
Patti Orban Quinby
Annabelle Radcliffe-Trenner
Bill Rawlyk
Amy Regan
Diane & Leon Rosenberg
Smith, Stratton, Wise, Heher &
Brennan
Hope Stockman
Lisa & Bob Stockman
Marie Sturken
Hannah Suthers
Terhune Orchards
Tewksbury Foot Bassets
Ethel Mae Theriault
Megan Thomas, Esq.
The Town Topics
Triumph Brewing Company
Jeff & Regan Tudor
Erik Jan & Deborah Walson
Laura Waterman
Mary Weeden
Louise Wilkens
Johanna Wirtz-Woodworth
Alex & Carol Wojciechowicz
Woodwinds Associates
Yanna

GALAS FOR THE GREENWAY COMMITTEE

Sophie Glover, chair
Kem Barbosa
Dorothy Wells Bissell

Rosemary Blair
Leslie Campbell*
Ellen Carlson*
Eve Coulson*
Liza deTuro
Liz Ebel
Alice Eno
Margo Froehlich*
Irvine Gaskin
Laura Hanson
Chuck Hartman
Carolyn Healey
Mary Hulme*
Jane Keller
Leslie Kuenne*
R. Todd Lincoln
Sharon Lorenzo
Marlene Lucchesi*
Lisa Marttila
Sandra More
JoAnn Munoz
Pat O'Connell
Caroline Pallat
Stephen Paneyko
Lois Perkins*
Meredith Peterson
Diane Rosenberg
Tibbie Samios
Mary Stange*
Amanda Stanton
Megan Thomas*
Regan Tudor
Deborah Walson
Mary Weeden
Liz Wert
Karen Wilkinson*
*Denotes New Gala Committee
Members for 2002

PREVIEW PRINCETON'S NEWEST PARK GALA COMMITTEE MEMBERS

Elizabeth Baughan
Cindy Besselaar
Judy Brodsky
Tom Byrne
Donna Case
Carol Christofferson
Wendell Collins
Liz Cutler
Ebet Dudley
Liz Ebel
Margo Froehlich
Katie Gardner
Mia Genis
Sophie Glover
Leslie Godfrey
Shelley Goldsmith
Karen Gordon
Mary Hulme
Judy Lavrich
Marlene Lucchesi

*"All the flowers of all the tomorrows
are in the seeds of today."*

—CHINESE PROVERB

Peter Lucchesi
Angie Monaghan
Nelson Obus
Carrie Pallat
Ruth Sigal
Mary Stange
Susan Wiley
Johanna Woodworth

STRATEGY 2000 COMMITTEE

Peter Dawson
Steve Doerler
Chuck Hartman
Wendy Kvalheim
Sharon Lorenzo
Wade Martin
Joseph Mollica
Tom Moore
Cindy Reed
Jesse Treu

VOLUNTEERS

AT&T volunteers
John & Jane Auciello
Peg Benton
Amy Breden
Carolyn Breden
Ben Brickner
The College of New Jersey
Environmental Club
Dale Emde
Jeff Emde
Joe Emde
Joseph Emde
Maddie Emde
Bill Grun
John & Margee Harper
Matthew Jackson
Joanne Kaiser
Matthew Levine
Warren Libensperger
Andrew Love
Stephen Mead
Diane Montagne
Jay Ottinger
Roxanna Paez
Liane Patsula
Princeton Day School Students
Princeton First Ward of the
Church of Jesus Christ of
Latter Day Saints Youth
Group
Clyde Quin
Ourania Rotou
Bonnie Sovinee
Elizabeth Stone
Hannah Suthers
Courtney Wald
Dottie Westgate
Marcus Yamashiro
Charles Zhao

A Permanent Home For Greenway

Delaware & Raritan Greenway will soon have a permanent home. When the 60-acre former RW Johnson estate on Rosedale Road was preserved, Greenway retained possession of the magnificent two-story barn and four cottages. The sale of three of the cottages to the Hun School helped finance the purchase of the property from the estate.

The barn is located in the center of the preserved open space of 55 acres and is flanked by 12 acres planned for active recreation, including two soccer fields and a girls softball field, and by the acres of passive parkland in Greenway Meadows. Built around the turn of the century, the 10,000 square foot timber frame barn is a beautifully preserved monument to the farming and pastoral roots of Princeton and a fitting new home for Greenway. Plans for renovation are under way and the total cost is estimated at \$2.5 million. Private solicitations from individuals and foundations will be the primary source of funds.

Delaware & Raritan Greenway is embarking on an ambitious plan to preserve and protect significant tracts of open space in central New Jersey over the next decade. To save these many thousands of acres in our region for wildlife protection, scenic beauty, water quality protection, and recreation will take the efforts of every facet of our communities in the coming years.

Greenway focuses its efforts on over 75 municipalities in our six county region of central New Jersey. The support and collaboration of all of these local communities will be involved in this urgent land preservation effort. The barn will serve as a central focal point for these groups to meet and collaborate to save these rapidly dwindling acres of open space still extant.

Greenway envisions part of the first floor of the barn as a home for its six permanent and three part-time staff, and the second floor as a center for the many



Greenway will have a permanent home

groups of our fellow conservation colleagues, grass-roots organizations, municipal, county, and state partners who will be a part of this ambitious plan.

Over the past five years, Greenway has earned a reputation throughout the state of New Jersey for its knowledge and professionalism in brokering

partnerships with government groups, private individuals and locally based corporations to save significant parcels of endangered land in central New Jersey. The barn will be a symbol of the determination and support for land conservation that is already a mandate from the communities in our beautiful region. ♡

IN MEMORIAM

The trustees and staff of
Delaware & Raritan Greenway
send their sympathy to the families of

Anne Dickason Rassweiler,

whose husband John is on the Greenway's
Board of Trustees, and

Alexander Wojciechowicz,

a great supporter of Greenway's mission.

Celebrating our Temporary Offices

Delaware & Raritan Greenway has moved from its former home on Mercer Road in Princeton. Our temporary headquarters are at Speiden House on Canal Road in Griggstown while the barn on the former RW Johnson property, preserved by Greenway and now called Greenway Meadows, is renovated.

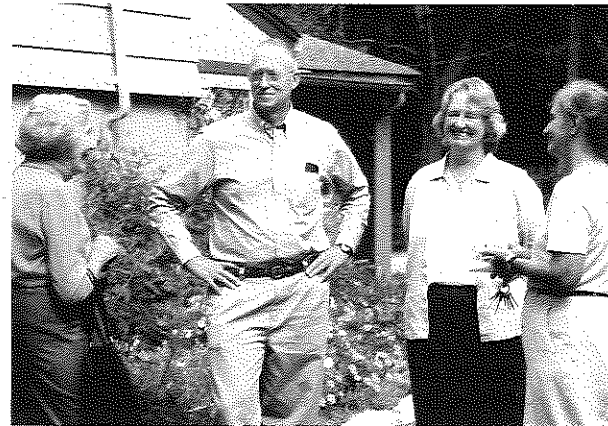
It wasn't just luck that allowed Greenway to move to this beautiful spot along the D&R Canal while it raises funds to renovate its permanent home. Over the past several years, Greenway has helped support the preservation efforts of two very important pieces of historic landscape along the Delaware & Raritan Canal in Griggstown. Bart and Cindy Hoebel's property, the 45-acre "Little Valley Farm" and the adjoining 85-acre Lois Speiden farm were preserved by Greenway in partnership with Franklin Township, Somerset County Parks,

and the New Jersey Green Acres Program. Bart Hoebel's love of this area led Greenway to Dr. Speiden, who wanted to preserve her land.

The Speiden property includes a large and comfortable farmhouse that was offered to Greenway as a temporary home by Somerset County Parks while the Greenway Meadows barn is renovated. Everyone, including Executive Director Linda Mead, agreed that there was literally "not another square foot available for staff, meetings, or private conversation, much less parking," at the Mercer Road property that had been rented from the state's Department of Environmental Protection.

As Bart Hoebel

says, "Greenway supporters ... can be proud of contributing to a beautiful recreation area, avian flyway, wildlife sanctuary, waterway and a heritage corridor in the midst of a densely populated area." And the staff of Greenway is reminded every day when they come to work that what they do for land preservation in central New Jersey is tangible, rewarding, and permanent. ♣



Celebrating our temporary offices on Canal Road at the Greenway Open House in September

Common Ground

Greenway Tops List with Green Acres

The New Jersey Green Acres Program has announced that a recent review of land trusts across the state reveals D&R Greenway to be at the top of the list in successfully completing transactions with Green Acres money to achieve land preservation results. D&R Greenway has been granted more state funding for land preservation than any other organization in New Jersey.

D&R Greenway was the first land trust in the State to complete a land preservation transaction with a Green Acres grant in 1991. Since then, we have spent 87% of the NJ Green Acres funds awarded to D&R Greenway. And with commitments currently in place for purchase of land and conservation easements, we expect to make that 100% by mid-2002.

The New Jersey Green Acres Program was established in 1961 to administer State funds for open space preservation. Green Acres purchases land and conservation easements directly, and provides grants to counties, municipalities and nonprofit organizations like D&R Greenway for open space. They make recommendations for land trust grants to the Garden State Preservation Trust, established in 1998 with a goal to protect one million acres of open space in the next ten years. D&R Greenway has received the highest level of funding from the State in each appropriation cycle in recognition of our success rate.

Dennis Davidson, Deputy Director of the NJ Green Acres Program, advised the original founders of D&R Greenway back in 1987. Dennis has watched the

progress of D&R Greenway over the years and shares, "D&R Greenway has become a critical partner in reaching the State's ambitious open space goals in central New Jersey. They know how to get things done, with their success rate growing to the highest level in the State. We will continue to support D&R Greenway in protection of the qualities that make New Jersey a special place to live."

As we look toward the future, we find that we have more landowners interested in preserving their land than there is public funding available. As good as we are at spending the available public dollars to accomplish land preservation results, we know that we will have to continue to raise private contributions at high levels in order to continue the pace of preservation we have set for ourselves.

In the end, the results speak for themselves. Together, we are making a difference by keeping the Garden State green. ♣

Galas for Greenway Get Better and Better!

We are all very pleased that Board member Sophie Glovier will continue to co-chair the Galas for Greenway events being planned right now. She will share her duties with Liz Ebel and Leslie Campbell, who have much experience with the galas as event and committee members. Artist Dorothy Bissell will continue to marshal the extraordinary talents of local artists in our region for the Galas for Greenway book, which will be released at the 2002 annual Galas for Greenway kickoff on June 9. Through the efforts of Board member Eleanor Horne, ETS will again sponsor this popular and successful fund-raising event for all members of the Greenway family. Watch for your invitation to the Kickoff sometime in early May.

It takes a lot of coordination and support by many committee members to help with the Galas events. At present the committees include: artwork, development, events, kickoff event, program book, publications, and publicity.

Here is a partial list of the many Greenway supporters who have already signed up:

Dorothy Bissell	Marlene Lucchesi
Rosemary Blair	Lisa Marttila
Leslie Campbell	Sandra More
Ellen Carlson	JoAnn Munoz
Eve Coulson	Lois Perkins
Liza deTuro	Meredith Peterson
Liz Ebel	Diane Rosenberg
Sophie Glovier	Tibbie Samios
Irvine Gaskin	Mary Stange
Laura Hanson	Amanda Stanton
Mary Hulme	Megan Thomas
Jane Keller	Regan Tudor
Leslie Kuenne	Deborah Walson
Todd Lincoln	Liz Wert
Sharon Lorenzo	Karen Wilkinson

Please call Sophie Glovier at (609) 252-1708, Liz Ebel at (609) 895-2135, or Leslie Campbell at (609) 333-0769 if you can join us to plan these great events benefiting Greenway's land preservation efforts in our community.

Just to tantalize you, here are several Galas that are in the planning stages for the 2002-03 Galas for Greenway:

- A repeat event that is becoming a tradition and is always sold out immediately is the Wine Tasting and Dinner at Tusculum hosted by Tom Moore and Chuck Hartman.
- A tethered balloon ride for the whole family at various sites preserved by Greenway along the Sourlands Ridge with lunch at one of our newest and most beautiful preserved areas.
- A tour and brunch at preserved Indian Run Nursery, famous for its many rhododendron species and hybrids—with a talk by Hank Schannen, from the

American Rhododendron Society, scheduled for the two weeks that the rhododendrons will be in bloom!

- A falconry club exhibition for the whole family: exhibitions of different birds of prey and their individual and unique flying techniques.
- A walk through Princeton: meander through properties preserved by Greenway that form a green belt around a portion of town. You will feel as though you're miles away from a city, but the trails and woods are right in your own backyard.

These are just a few of the many Galas being planned. If you have an idea, or would like to join us, please call Sophie, Liz, or Leslie. ♣



Galas chairs Leslie Campbell and Sophie Glovier pause for a moment while planning the 2002-03 Galas for Greenways (see page 8 for a picture of co-chair Liz Ebel.)



Laura Waterman and Lisa Stockman on "The Women's Hike" at the Bald Pate Mountain Gala for the Greenway

D&R Greenway, Inc.

BOARD OF TRUSTEES

Charles M. Hartman
Chair

Richard S. Goldman, Esq.
Edmund Stiles, Ph.D.
Vice-Chairs

Alan M. Hershey
Treasurer

Linda J. Mead
Secretary

Rosemary Blair
Thomas J. Cawley
Joyce M. Copleman
Alice Eno
Fred L. Gaskin
Sophie S. Glover
Ashton Harvey
Eleanor V. Horne
Robert C. Johnston, Esq.
Mary Allessio Leck, Ph.D.
Cathleen R. Litvack
Hella McVay
Thomas A. Moore
Kim Augustis Otis, Esq.
Thomas M. Poole
John Rassweiler, Ph.D.
Cynthia L. Reed
Megan E. Thomas, Esq.
James W. Trowbridge
Neil Upmeyer
John R. Weingart

ADVISORS

James C. Amon
Dennis Davidson
John and Margee Harper
John D. Mitchell
Lewis W. Parker III, CPA

STAFF

Linda J. Mead
Executive Director

Peg Benton
Office Assistant

Nancy Breden
Administrative Assistant

Katherine Buttolph, Esq.
Land Preservation Counsel

Carol Christofferson
Director of Development & Communications

Laurie Emde
Director of Internal Operations

Mary Penney
Administrative Assistant

William C. Rawlyk
Senior Land Preservation Specialist

Patricia B. Shapella
Development Officer

Louise Wilkens
Land Steward

Delaware & Raritan Greenway, Inc., is a regional, 501(c)(3) nonprofit land conservancy dedicated to the preservation of open space throughout central New Jersey. Mahlon Lovett, design; Heather Lovett, illustrations
Printed on recycled paper

New Roles for Greenway Volunteers

Two Greenway volunteers will be taking on more responsibilities in 2002. Pictured below (from left), Board member Fred Gaskin and volunteer Liz Ebel, who will co-chair our highly successful Galas for the Greenway Octoberfest celebration again this year. They are receiving thank you gifts from Board Chair-elect Chuck Hartman (right) for their great work in 2001.



Fred Gaskin, Liz Ebel and new Greenway chair Chuck Hartman at the "Octoberfest" Gala for the Greenway

Liz, along with Leslie Campbell and Board member Sophie Glover, will co-chair the 2002-03 Galas for the Greenway.

Chuck Hartman will step up to the plate as Chairman of the Board of Trustees after serving as a member of the Board since 1995 and as chair-elect during 2001. He succeeds Neil Upmeyer, who served as Chair for four years and has been a member since 1990. Neil will remain on the Board and will be a member of the Development Committee. Neil's vision and leadership have guided Greenway through a tremendous growth period. His confidence has inspired donors and partners to join with Greenway in our mission.

Greenway salutes Lisa Stockman as she steps down from the Board of the Greenway after ten years. Lisa was involved in the early days, supporting Greenway generously with her time, her talent and her home as the organization expanded to achieve a significant impact on our region. Lisa will remain involved through Galas for the Greenway events. ♡

DELAWARE & RARITAN

GREENWAY

1327 Canal Road
Princeton, New Jersey 08540
(609) 924-4646, Fax (609) 924-5577
Email info@delrargreenway.org

Nonprofit
organization
U.S. postage
PAID
Permit no. 54
Princeton, NJ