

GREENWAYS

Newsletter of
Delaware & Raritan Greenway, Inc.
Volume 11, Number 2
Summer 2003

Delaware & Raritan Greenway Facilitates Preservation of 400 Acre United Water Property

On Saturday, June 21, Linda J. Mead, Executive Director of Delaware & Raritan Greenway stood with Governor McGreevey as he announced the preservation of United Water property in Lambertville and West Amwell — protecting 400 acres of significant watershed land and ensuring the continued quality of the water supply for 1,626 United Water customers — the entire city of Lambertville and citizens of West Amwell. D&R Greenway led the negotiations, bringing the State DEP Green Acres Program and United Water together to protect this remarkable property. Now, with the completion of the United Water land, D&R Greenway has preserved over 6,000 acres of land valued at more than \$113.4 million.

As part of the negotiation process, D&R Greenway worked with both towns to ensure that their citizens would benefit.

Linda Mead commented, "D&R Greenway's expertise is in crafting deals that are advantageous to all parties concerned. It was crucial that everyone — the State, United Water and most importantly the citizens of Lambertville and West Amwell — derive a real and lasting benefit from the preservation of these 400 acres of magnificent open space."

Robert J. Iacullo, President of United Water, added, "Our agreement is a victory for everyone involved in making this historic transaction a reality. We're pleased to play a part in helping to ensure that our customers in Lambertville and the residents of West Amwell get to enjoy this land for generations to come. I'd like to thank the NJ Department of Environmental Protection and the D&R Greenway for all their assistance."

These 400 acres provide a crucial connection between the Sourland Mountain Greenway and the Dela-

ware River Greenway and will also provide passive recreation and protection of natural resources for the community. This property also forms an essential link in the *Crossroads of the American Revolution* — preserving the footpath of General Washington's troops as they marched from the Delaware, through Hopewell and on to the Battle of Monmouth in June / 1778.

D&R Greenway worked in partnership with the National Park Service to complete the initial *Crossroads of the American Revolution* study for possible designation as a National Heritage Area.

This preservation success is the culmination of almost 18 months of intense activity. Our thanks to our partners in preservation, NJ DEP Green Acres Program and United Water, for working together to make the permanent protection of this spectacular property a reality. ■

Land Preservation Update

As of June 30, 2003, D&R Greenway has preserved over 6,000 acres of land valued at more than \$113.4 million.

Inside

- New preservation focus for the Sourlands
- D&R Greenway joins with Amigos de Calakmul
- 2003 preservation update
- *Greenway Gala* photos
- *Good Time Galas for the Greenway* — make your reservations today
- Staff news
- Thank you to our supporters

State Open Space Referendum — Vote YES

The November ballot will include a referendum on a proposed amendment to the state Constitution. If passed, the amendment will increase open space funding by \$150 million. Look for the ballot question, and support open space on Question 2!



Governor McGreevey announces the preservation of the 400-acre United Water property, facilitated by D&R Greenway. U.S. Senator John Corzine and NJDEP Commissioner Bradley Campbell are to the Governor's left. D&R Greenway Executive Director Linda Mead, and U.S. Congressman Rush Holt stand behind the Governor.

A New Focus for Land Preservation: The Sourland Mountains

New Jersey's traditional mantras for land preservation have been *The Highlands* and *The Pinelands*. Now, thanks to the vision and effort of Dennis Davidson and Bill Rawlyk, D&R Greenway's Land Preservation and Stewardship experts, New Jersey has added a new chant: *The Sourlands*.

In fact, through Dennis and Bill's initiative, the state has been partnering with D&R Greenway on an innovative new funding program that will result in the acquisition of 300 acres in the Sourlands. These 300 acres are made up of 11 key properties that taken together connect the ridge top along the *Sourlands Greenway*. D&R Greenway negotiated with each property's owner to create a deal that would benefit both the landowner and the State. We brought the properties as a group to the attention of the New Jersey Department of Environmental Protection Green Acres Program. With the technical and financial details already negotiated, Green Acres' commitment was to verify clear title and identify the funding necessary to purchase the land. The final result – all 11 properties, all 300 acres, will be purchased and permanently preserved by the State. An additional benefit from this group of transactions is that the State of New

Jersey has been able to make a significant preservation impact in one fell swoop and will now keep the Sourlands in the forefront for continued preservation.

Why is saving the Sourlands so important? The 62 square mile main ridge spans the area from the Delaware River at Lambertville to the west, the Raritan River to the north near Somerville and the Millstone River and the D&R Canal to the east. The region crosses Hunterdon, Mercer and Somerset counties. The Sourland's large areas of mature, intact forests and perched wetlands provide the geological conditions necessary for the formation of the headwaters of many of the streams in our region. The intact forests protect and recharge the groundwater aquifers feeding these streams. In turn, these streams feed larger rivers, replenish watersheds and maintain our water supply. The Stony Brook, Beden's Brook, Rock Brook, Back Brook, Alexauken Creek, Swan Creek, Moore's Creek and the Neshanic River all originate in and flow from the Sourlands. Much of their volume flows into the D&R Canal, supplying water for about one million people. The quality and quantity of our region's drinking water absolutely depends on the protection of this environment, which

supports these important waterways.

In addition to their essential role in protecting our water, the large, unbroken forest and wetlands of the Sourlands also provides the required habitat for many bird, plant and other wildlife species. The wooded Sourland Mountains have been called an island of biodiversity in central New Jersey. Neotropical migrating birds such as the Scarlet Tanager breed in the Sourlands in spring and summer and winter in the forests of Central and South America. Other deep forest birds that find a home in the Sourlands include wood warblers such as the Oven Bird and songbirds like the Veery, Wood Thrush and Rose-breasted Grosbeak. All of these birds require large areas of unbroken forest interior habitat and do not breed in isolated patches of woodland. (Please see the related article on *Amigos de Calakmul*, D&R Greenway's sister land trust located on the Mexico-Guatemala border, on the facing page.)

The perched wetlands of the Sourlands contain many vernal pools that are critical breeding sites for threatened species of frogs and salamanders. Vernal pools are specialized habitats that hold water in winter and spring, but dry up in summer. As a result, vernal pools do not support fish that would otherwise prey on immature stages of breeding amphibians. If you would like to learn more about vernal pools, D&R Greenway is holding a *Gala* on March 13, 2004 to explore this springtime phenomenon. (Please see the *Galas'* listings on page 7 for more information.)

The preservation of the Sourlands provides both a refuge where wildlife can breed and thrive and a refuge where people can enjoy the land and recharge their spirits. Hiking trails currently exist through both county and privately held protected land, such as D&R Greenway's McBurney Woods and Cedar Ridge Trail, and Hunterdon and Somerset County's Sourland Nature Preserves. Many direct trail linkages have been recently acquired which connect towns such as Lambertville, Hopewell, and Pennington to some of the most scenic land in the Sourlands. With the acquisition of these 11 new properties covering 300 acres, the potential exists to greatly enhance

Continued on facing page



Mature forest and perched wetlands join with diabase geology where the headwaters of many of our region's streams begin in the Sourlands

Sourlands

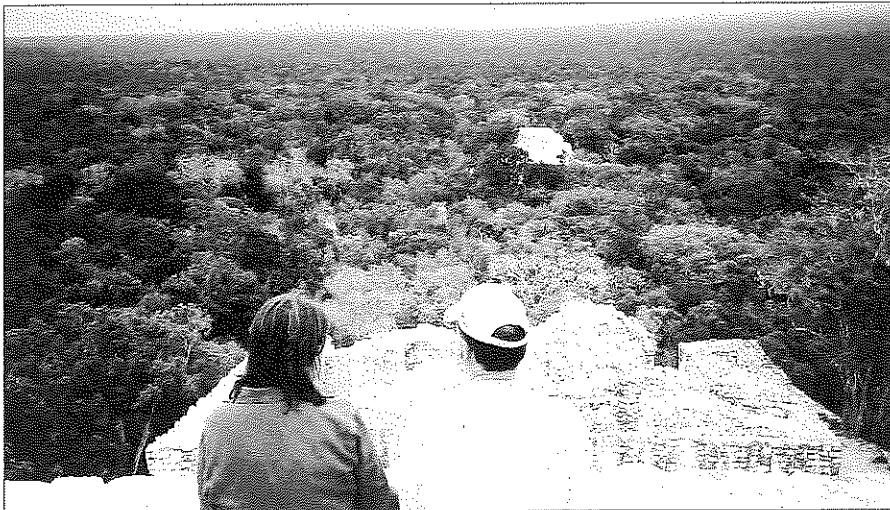
Continued from facing page

these recreational opportunities by creating a trail system that would connect protected areas throughout the region.

For more information about how you can become a Sourlands partner in preservation please contact either Bill or Dennis at brawlyk@delrargreenway.org

delrargreenway.org or ddavidson@delrargreenway.org or call 609-924-4646. ■

D&R Greenway would like to thank the Board of Directors and Staff of the Whole Earth Center in Princeton, NJ for their generous contribution in support of our work in the Sourlands.



D&R Greenway's Linda Mead and husband Steve look out over the vast forest and Mayan ruins of the Calakmul Biosphere Reserve in the Yucatan, Mexico

Common Ground

D&R Greenway and Amigos de Calakmul

What do central New Jersey and Central America have in common? They both provide a home to the Scarlet Tanager (just one of over 60 neotropical migrating birds dependent on the forests of both regions for their survival)!

One of D&R Greenway's preservation priority areas is the Sourland Mountain because of its importance to water quality and biodiversity (see the related article on the Sourlands on facing page) In support of this effort, Ted Stiles, a vice chair of the D&R Greenway Board of Trustees, suggested that D&R Greenway establish a partnership with a land trust in Central America. Amigos de (Friends of) Calakmul seems the perfect fit. The goal for both organizations is to collaborate on programs and activities that will increase awareness of the need to protect each region's forest habitat and to provide new fundraising

initiatives that will support the protection of more acres/hectares of land.

At the invitation of World Parks, an international conservation organization, D&R Greenway's Linda Mead and Bill Rawlyk attended the Fifth Interamerican Conference on Private Conservation. There they met Dr. Gerardo Ceballos, founder of Amigos de Calakmul. This pioneer organization has been working to preserve large tracts of intact forest in the Calakmul Biosphere Reserve in Mexico's Yucatan Peninsula through leasing from local Ejido landowners. An Ejido is a culturally connected group of people who collectively own land. Oftentimes these groups have limited economic resources, forcing them to log the forest that is home to jaguars, orchids, and the neotropical migrant birds that breed in the Sourlands of central New Jersey. Like D&R Greenway, Amigos de Calakmul

is focused on preserving private land and understands the essential importance of good relationships and respect for local landowners. They are successfully negotiating innovative leases with Ejido landowners that provide a good outcome for all parties. D&R Greenway shares this "win-win" philosophy and has found that strategies based on mutual benefit provide stability and lead to long-term successes in future land preservation.

In order to pursue a "Sister Land Trust" relationship with Amigos de Calakmul, D&R Greenway applied for a grant from the Beneficia Foundation, which was received at the end of May 2003. With this funding, we plan to initiate pilot projects with Amigos de Calakmul, which may include:

- Information exchanges to share technical expertise
- Tours from the U.S. to The Calakmul Biosphere Reserve on the Mexico-Guatemala border
- Creation of a photography exhibit that highlights the species common to both habitats and that can be used as a tool to raise awareness and education for both organizations
- Development of a joint conservation project that will be supported by a targeted fundraising campaign by both organizations
- Presentation of the results of the emerging partnership at the National Land Trust Rally in October 2003 to encourage other U.S.-based land trusts to form similar partnerships.

This emerging partnership between D&R Greenway and Amigos de Calakmul is the first of its kind for a regional land trust. We hope its success will serve as a model for many of the 1,260 land trusts nationwide.

And who knows — next year's *Good Times Galas for the Greenway* could feature an exciting *Gala* trip to Mexico to meet with Dr. Ceballos and see first hand the positive results of the collaboration between D&R Greenway and Amigos de Calakmul — from the Sourlands to the Yucatan.

For more information or to express an interest in attending this proposed *Gala* please call Jo-Ann Munoz at 609-924-4646 or jmunoz@delrargreenway.org. For more information on Amigos de Calakmul please visit www.calakmul.org ■

D&R Greenway Joins with Partners to Protect Open Space – 2003 Update

With New Jersey losing 50 acres of open space every day, D&R Greenway's mission is simply to preserve as much environmentally sensitive and historically significant land as we can, as quickly as we can. As leaders in central New Jersey's land preservation community, D&R Greenway is working to provide an overall vision for our region's preservation landscape. Along with this vision, we are developing strategies for identifying potential properties, strong partnerships at all levels of state, county and municipal government and an array of creative and innovative techniques we can use to accomplish our goals.

There are two fundamental approaches we apply to preservation projects; we can either *facilitate* the transaction or we can *directly acquire* the land or the conservation easement on it. Both approaches are equally valid, as both result in the protection of open space. When D&R Greenway *facilitates* a project it means that we bring the landowner together with potential funding partners and sources, provide the necessary technical expertise, negotiate a deal beneficial to all parties and successfully close the transaction. The state places a conservation restriction on the deed that prevents any further development and carefully regulates the use and management of the land. In all cases D&R Greenway endeavors to create a lasting impact, educating our facilitation partners in the tools and techniques we use, so in the future they will be able to preserve properties on their own.

With *direct acquisition*, D&R Greenway itself becomes a funding source during the facilitation process — by using our resources to either acquire the land outright or by purchasing an easement on the property. As central New Jersey's regional land trust with not-for-profit status, D&R Greenway is eligible to obtain New Jersey Green Acres funds to directly invest in land preservation. We are also entitled to solicit tax-deductible contributions from the private sector (individual and corporate) for the same purpose. Once D&R Greenway acquires a

property or an easement, using state and/or private funds, the state places the same kind of conservation restriction on the deed we hold.

How does D&R Greenway decide which properties to invest in and which to facilitate? Simply put, we try to facilitate as many deals as possible, holding our state fund allocation in reserve for those transactions that absolutely would not happen without our aid. Frequently our direct acquisitions occur in areas without a history of meaningful land preservation. Our protection of the first property raises awareness of the need for preservation and provides a successful case study for the municipality, the county or a local grass roots organi-

Greenway, an important and growing greenway vital to the protection of the Millstone River stream corridor. Also intriguing is the fact that this land enjoyed brief notoriety 65 years ago, as it was a part of the Grovers Mill countryside "invaded" during Orson Well's October 30, 1938 broadcast of *The War of The Worlds*. According to local legend, the water tower on a nearby property still retains the buckshot scars inflicted by a local farmer who mistook it for a Martian spacecraft.

Its preservation is particularly significant because of the property's highly developable character, located in the heart of a thriving residential neighborhood. In facilitating this preservation, D&R Greenway worked closely with the landowner, the New Jersey Green Acres Program, West Windsor Township and Friends of West Windsor Open Space

"It is said that the highest form of charity occurs when you give a gift and then teach the recipient how to recreate that gift by themselves. That's what D&R Greenway did for us. They facilitated the preservation of land for the citizens of West Amwell and they helped show us how to preserve our land on our own in the future."

— Peter Buchsbaum, Mayor, West Amwell Township

zation to build on. Our node of preservation becomes a rallying point for additional preservation projects that we are frequently asked to facilitate!

During the first half of 2003, D&R Greenway successfully preserved 788 acres of land valued at more than \$21.7 million using a combination of both approaches.

Since January, D&R Greenway has *facilitated* four preservation projects and the first, the *Yeger Property* in West Windsor Township, is a prime example of how the process works. The property consists of 23 acres of pristine woodland and is another link in the *Millstone River*

(FOWWOS). The land was sold to the State of New Jersey and West Windsor Township with a small interest held by FOWWOS. As a result, instead of more neighbors, traffic and congestion, residents will have a beautiful and serene natural area for hiking, biking and passive recreation.

The *Ashton Property* in West Amwell Township comprises 40 acres of woodland on the Sourland Ridge. This property forms part of the *Delaware River Greenway* and is another in a strategic series of properties (including the Wagner Property, preserved by D&R Greenway in 2002 and the Mazur

Partners

Continued from facing page

property, discussed later in this article) that will connect the Sourlands to the recently preserved United Water property and Washington Crossing State Park.

D&R Greenway worked with the landowner and West Amwell Township to design a conservation easement with public access through the property. This facilitation project was significant for West Amwell Township as it provided them with a case study on how to go from contract to completion with this type of preservation.

The Platz Farm in Montgomery Township is a 39-acre parcel near the foothills of the Sourland Mountains. This property is the second link in the emerging *Montgomery Greenway*, which is designed to link the *Sourland Mountain Greenway* to the *D&R Canal Greenway*. It was also the first project undertaken by the newly formed Montgomery Friends of Open Space. "This is really an exciting moment for us," said Loraine Otis, President of the Montgomery Friends. "We worked very hard to reach out to the property owner and to communicate our preservation goals. This property provides a crucial link to the Sourland Mountain Preserve and to the already preserved Runyon-Fulper tract to the southeast."

This facilitation posed a unique set of challenges since the property was already under contract to a developer. D&R Greenway guided Montgomery Township and Montgomery Friends of Open Space through a series of complex negotiations with the help of Wade Martin of The Martin/Arnold Group, UBS Financial Services Inc., a partner and financial advisor to both D&R Greenway and Montgomery Friends. Wade was able to provide the crucial financial planning tools to create a convincing case for preservation that both the landowner and the developer could understand.

Montgomery Township purchased the land from the developer with Montgomery Friends of Open Space paying for some of the technical costs. D&R Greenway's leadership throughout this facilitation provided the Friends with a better understand-



Rushing waters of Moore's Creek flow through the Mazur property along a protected greenway that connects Mercer County's Howell Farm to preserved United Water lands in the Sourlands

ing of how to identify and protect their open space.

They said it couldn't be done, but D&R Greenway found a way to do it! The *Kanach Property* in Branchburg consists of 210 acres of prime developable farmland in the heart of the township. The last open space parcel left in the town, it was located directly across from the municipal offices. The property had water and sewer approvals and was proposed for a conforming subdivision, needing no new variances for the construction of 200 houses. And time was very short, as the developer had already negotiated a deal with the landowner.

With the clock ticking, the township asked for our help in structuring a deal that would allow them to compete with the developer. Working with the landowner, the township and a range of public funding sources, D&R Greenway was able to negotiate a compelling and fiscally responsible scenario that allowed Branchburg Township to make an offer on the land that was compelling to the landowner. This facilitation was truly a win-win for all parties concerned.

D&R Greenway has *directly acquired* two properties so far this year. The *Pearson Property* consists of 100 acres of deep forest habitat in the Sourlands. It is an important component of the *Sourland Greenway*, connecting D&R Greenway's Northern Stony Brook Preserve in Hopewell and East

Amwell across the Sourlands towards Hillsborough. The property is also located near the Hunterdon County Sourland Preserve, leading Hunterdon County to play a major role in its acquisition with D&R Greenway's technical and funding help. This beautiful and pristine woodland has been designated for passive recreation as a Hunterdon County park.

As we go to press, we are preparing to close on the *Mazur Property*, 210 acres in West Amwell Township that fall within the *Delaware River Greenway*. The property is the final link needed to protect the Moore's Creek watershed, and also provides a scenic viewcape for West Amwell Township. D&R Greenway is preserving this land through the combination of an outright purchase of 16 acres of wooded stream corridor and the purchase of a conservation easement on 187 acres of farmland known as Fiddlers Creek Farm. Hunterdon County and the NJ Green Acres Program are the key funding partners.

No matter how it gets done, preserving open space in central New Jersey is important, time-sensitive work. Thanks to the strength of our professional land preservation staff, our vital relationships with a variety of partners, and the leadership and commitment to find a way to make it happen despite overwhelming odds, D&R Greenway is helping to keep our open space green and growing. ♡

The Greenway Gala, June 8, 2003

A Celebration of People and the Land

This year's *Greenway Gala* was a festive evening where D&R Greenway and our partners in land preservation joined together to celebrate our successes, honor a champion of open space and this year, sadly, mourn the loss of a great friend, honorary chair Frank E. Taplin.

Our thanks to ETS and D&R

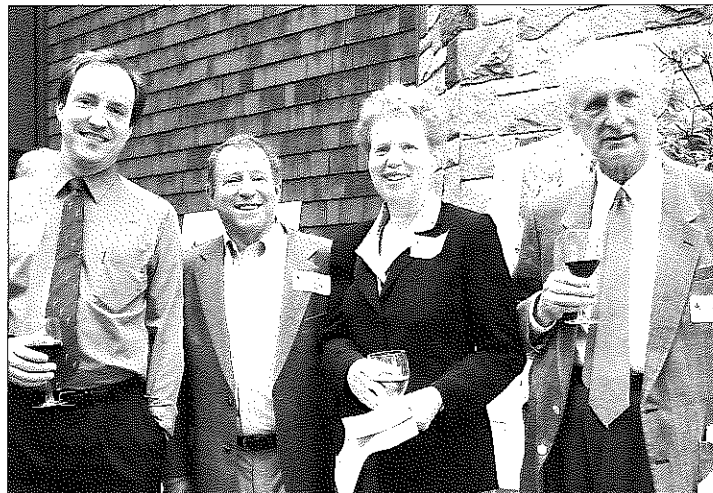
Greenway Vice Chair Eleanor Horne for hosting our event and to the 2003 Galas Committee, co-chaired by Sophie Glover and Ellen Carlson for all their help in organizing our first-ever juried art show and the 2003 *Good Time Galas for the Greenway*. The *Greenway Gala* was a tremendous success, generating \$110,000 for land preservation. 🍀



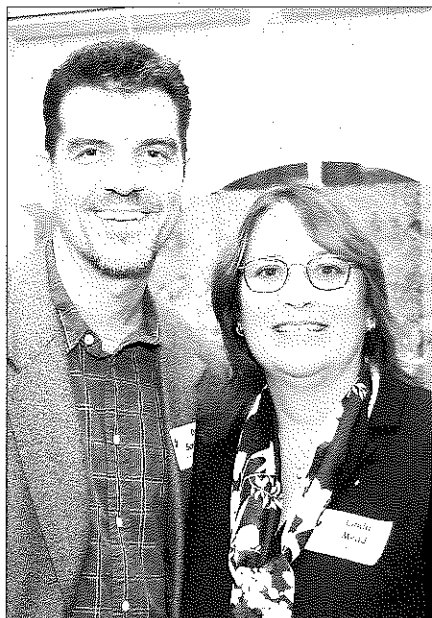
D&R Greenway Advisor John Harper presents a tribute to Greenway Gala Honorary Chair Frank Taplin



D&R Greenway Vice-Chair Eleanor Horne presents the 2003 Donald B. Jones Conservation Award to Becky Taylor



Andy Rowan, from the Stony Brook Millstone Watershed Association, D&R Greenway Treasurer Alan Hershey and wife Phyllis Frakt, and supporter Ted Chase



Acadia Marketing Principal and D&R Greenway supporter Dale Schierholt and Linda Mead



D&R Greenway Trustee and Galas Co-Chair Sophie Glover, 2002 Donald B. Jones Award Winner Pam Mount, U.S. Congressman Rush Holt, Galas Committee Member Leslie Kuenne

The Summer May Be Over, But the Fun Continues... **The Good Time Galas for the Greenway Are in Full Swing**

Once again D&R Greenway invites our partners in preservation to *The Good Time Galas for the Greenway*, a series of parties, festivals and educational events that help raise funds to support D&R Greenway's land preservation efforts in our area.

For reservations, please call us at 609-924-4646. We hope to see you at one or more of our *Galas*!

A Loop through Lawrenceville

*Sunday, September 14, 2003
5:30 p.m. (\$75 per person)*

Discover a beautiful contiguous area of open space in Lawrenceville guided by botanist Mary Alessio Leck, Rider University professor

emeritus and D&R Greenway trustee. Walk across unspoiled fields and forests to the Carson Road Woods, preserved by D&R Greenway last year, and then enjoy a Sunday picnic supper at Diane and Leon Rosenberg's farm.

Portrait in the Garden

*Sunday, September 14, 2003
10 a.m. (\$200 per family)*

You won't want to miss this special opportunity to have your family portrait taken by award-winning photographer Pryde Brown at the recently restored Sign of the Fox Farm in Princeton. After you are photographed, relax and reflect around the pond or hike down a path to the 100-acre Woodfield

Preserve. Changing accommodations available for your post-photographic ramble.

Bird Banding and Bagels

*Sunday, September 21, 2003
7:30 a.m. (\$60 per person)*

A perennial *Galas for the Greenway* favorite! Be one of only twelve lucky guests to work with Hannah Suthers, one of Central New Jersey's most celebrated ornithologists, as she captures and bands a variety of songbirds at the Sommer Park Preserve, Sourland Mountain.

Vernal Pools and Salamanders

*Saturday, March 13, 2004, 10 a.m.,
and TBD (\$60 per adult,
\$30 per child, \$120 per family)*

Vernal pools are springtime phenomenon that provide habitat to many species of amphibians, insects, reptiles, plants and other wildlife. D&R Greenway's Bill Rawlyk will introduce you to this magical world through this unique two-part *Gala*.

First attend a scheduled workshop at D&R Greenway's headquarters in Rocky Hill for an introduction to vernal pools and the creatures that breed there.

Shortly after, when conditions are right, a phone call will summon you to Sommer Park preserve in the Sourland Mountain for an early evening trek to visit vernal pools and see spotted salamanders and wood frogs in their annual breeding rituals.

Rhododendron Garden Tour

*Saturday, May 15, 2004
10 a.m. (\$35 per person;
Group Pricing Upon Request)*

Back by popular demand! Preserved by D&R Greenway in 2002, the 17-acre Indian Run Nursery in Washington, NJ has one of the oldest and finest collections of rhododendrons in the northeast. During this peak season tour you will be able to see rare specimens in full, glorious bloom. You will also have the opportunity to purchase nursery plants cloned from the Indian Run plants. Representatives from the American Rhododendron Society will provide expert advice on selection and cultivation. This is a stunning floral display, not to be missed! 🌸

Great Greenway Balloon Festival

*Saturday, October 4, 2003
3 p.m. for Family Fun
(\$60 per family)
5 p.m. for Balloon Flight
(\$250 per flyer)*

The not-to-miss event this fall is the second annual *Great Greenway Balloon Festival*, which will be held on Saturday, October 4th at Greenway Meadows Park in Princeton. As we did last year, a flotilla of hot air balloons will take to the skies about an hour before sunset and gently float their

passengers whichever way the wind blows. After touchdown, flyers will be driven back to Coventry Farm for a post-flight celebration at the home of Kathy and John Winant.

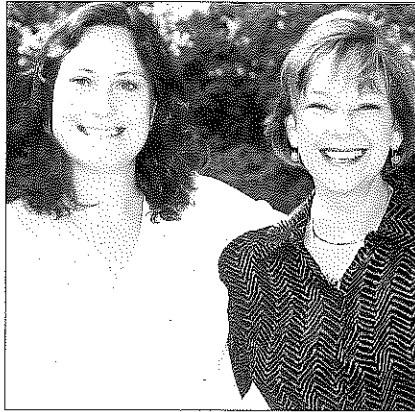
And this year we've added something special — a Family Fun Festival for non-flyers. This will also be held at Greenway Meadows Park on Saturday October 4th, from 3:00 p.m. until the balloons take off. Guests will enjoy arts and crafts, entertainment, games, traditional refreshments and, of course, the spectacular sight of hot-air balloons rising high into the late afternoon sky.



Balloons about to take-off at the 2002 Balloon Festival

Greenway Staff News

D&R Greenway wishes a fond farewell to Carol Christofferson whose leadership as our Director of Development and Communications has helped us to achieve many goals over the past two years. Carol has contributed greatly to our work through her development expertise, helping us with major donors, foundation and corporate grants and fundraising for Greenway Meadows, Rosedale Road Woods, and The Greenway Center. Carol has also been a major donor to D&R Greenway on a personal level. Although moving out of the area, Carol hopes to remain involved as a



Jo-Ann Munoz and Carol Christofferson

supporter and advisor to assist our fundraising efforts.

We are happy to announce that Jo-Ann Munoz, a Princeton resident who has served as the staff liaison for the *Greenway Galas*, has been promoted to Director of Communications. Jo-Ann will apply the marketing and communications skills acquired during her 15 years in the advertising industry, most recently as a Senior Vice President at McCann-Erikson Advertising, to promote the importance of saving land.

We also welcome Zac Anglin as a part-time office assistant this summer. He has done a terrific job organizing our office space and files, making a nicer and more comfortable working environment for all of us. ♣

In Memoriam

Two Very Special Members of Our D&R Greenway Family

Christopher Florian Walson

Christopher Florian Walson, age 6, died suddenly in a swimming accident on June 23, 2003. Christopher was a smiling and lively kindergartener who loved playing games with his siblings Cecile, Sinclair, Margaux, and Adelaide. In 1999, Christopher joined with family members when parents Erik Jan and Deborah Walson placed a conservation easement on their property, protecting forever a significant historic landscape. The family property, Willow Gate, is an eighteenth century farm in Lawrenceville where the Walsons hosted an Easter Egg Hunt in support of D&R Greenway this past spring.

Christopher will be remembered for the happiness he easily shared, just as Willow Gate will forever remain a place of beauty. Our love and prayers go out to the Walson family.

Thomas Frederick Breden

Tom Breden, husband of D&R Greenway staff member Nancy Breden, passed away suddenly on July 1, 2003. As Administrator of the Office of Natural Lands Management in DEP, Tom helped identify the state's most significant natural areas by managing an inventory of rare plant and animal species. He was also a founding board member of

NatureServe, a non-profit network that provides the scientific information and tools needed to help guide effective conservation action.

Tom believed that it was our responsibility to care for the natural world that God created. He was passionate about things like moths and butterflies, milkweeds and gentians, plovers and periwinkles, and made it his life's work and mission to protect the places where plants, insects, birds and other wildlife lived.

Tom's legacy lives on through the places and people he touched with his dedication to conservation. As a colleague so eloquently noted, "Mother Earth has lost one of her greatest champions. The sky weeps but Tom's contributions will live on."

D&R Greenway celebrates Tom's life and offers our love and support to Nancy and daughters Carolyn and Amy. ♣

Bequest Information

We hope that you have put D&R Greenway in your will as a recipient for a Bequest. Sample wording to give to your attorney for inclusion in your will:

"I devise and bequeath to DELAWARE & RARITAN GREENWAY, INC., a not-for-profit corporation whose address is 1327 Canal Road, Princeton, New Jersey, the sum of \$_____ [or _____ percent of my residuary estate] for its general uses and purposes."

Including Delaware & Raritan Greenway in your will is one of the most significant things you can do to save our landscape for your heirs. It is a true legacy. If you are interested in other giving opportunities such as a charitable remainder trust or the donation of your land for tax benefits, call Linda Mead at D&R Greenway (609-924-4646).



Green Darner
(*Anax junius*)

THANK YOU to All our Partners in Preservation

Delaware & Raritan Greenway relies on your contributions to enable our success in preserving environmentally sensitive and historically significant land in central New Jersey. Public acknowledgement of the extraordinary generosity we enjoy from all of you is very important to us.

Sponsors of The Greenway Gala

The Greenway Gala is D&R Greenway's annual opportunity to join together with our partners in preservation to celebrate our past year's success. This event would not be possible without the incredible support of Educational Testing Service and Eleanor Horne, Vice Chair of our Board of Trustees, and it would not be a *Gala* without the generous support of the sponsors listed below. Our thanks to each and every one of you — and remember to mark your calendars for next year's *Greenway Gala*, planned for Sunday, June 6, 2004.

Corporate Sponsors

GREENWAY LEADERS (\$10,000+)

Bristol-Myers Squibb Company
Educational Testing Service
Larson Land Fund
The Martin/Arnold Group, UBS
Financial Services Inc.

GREENWAY BENEFACTORS (\$2,500+)

Acadia Marketing & Design
Bloomberg
U.S. Trust Company

GREENWAY PARTNERS (\$1,000+)

Steven J. Doerler – Doerler
Landscapes Inc.
Elizabethtown Water Company
Charles Jones, LLC
Smith Stratton Wise Heher &
Brennan, LLP

GREENWAY TRIBUTARY SPONSORS (\$500+)

Central Lewmar/Pick Quick Papers, Inc.
R.A. Curini Appraisal Co., Inc.
Drinker Biddle & Reath LLP
Ford Farewell Mills & Gatsch,
Architects, LLC

Tom Rodriguez Associates
Terhune Orchards

GREENWAY WOODLAND SPONSORS (\$350+)

Banisch Associates, Inc.

Garden Club of Princeton
Heritage Restoration Management, LLC
Martin Appraisal Associates, Inc.
Pinto and Butler
Trap Rock Industries

GREENWAY TRAIL SPONSORS (\$200+)

Mason, Griffin & Pierson, P.C.
Pharos Studios, Inc.
Camillo Pirone & Son Inc.

Individual Sponsors

GREENWAY BENEFACTORS (\$2,500+)

Charles and Mary Louise Hartman

GREENWAY PARTNERS (\$1,000+)

Mr. and Mrs. Alexander K. Buck
Mervin R. Dilts, Ph.D.
Eleanor V. Horne
Helen M. Hunt
Emile and Nancy Schoffelen
Elizabeth Stetson

GREENWAY TRIBUTARY SPONSORS (\$500+)

Ellen and Charlie Baber
Peter and Wendy Benchley
Micaela de Lignerolles
Elizabeth C. Dilworth
Curtis and Sophie Glover
Laura and Alex Hanson
Tom and Archer Harvey
Alan M. Hershey and Phyllis M. Frakt
Charlotte and Pat O'Connell
Anne and Jack Rabinowitz
Robert N. Ridolfi
Lisa and Bob Stockman
Scott and Alexis Weiner
Caroline and Helmut Weymar
Dick Zimmer and Marfy Goodspeed

GREENWAY WOODLAND SPONSORS (\$350+)

B.J. and Kevin Booth
Theodore and Victory Chase
Carol Christofferson
Brian and Karen Fullerton
Irvine and Fred Gaskin
Samuel M. Hamill, Jr.
Cate and Jim Litvack
Lewis Maltby and Beth Van Hoeven
Cheryl and Brad Mills
Joseph and Mary Jean Mollica

Tom and Jane Poole
John Rassweiler
Gregory and Elizabeth Samios
Neil and Mimi Upmeyer
Barbara Vanderkolk and Tom Gardner
Susan and Donald Wilson

GREENWAY TRAIL SPONSORS (\$200+)

Kathleen and Jim Amon
Theodossios and Elaine Athanassiades
Elizabeth and Peter Baughan
Phoebe T. Biddle
Helen and Peter Bienstock
Kimberly and David Bitterman
Rosemary and David Blair
Sheila Bodine
Barbara P. Broad
Enid and Byron Campbell
Helen R. Cannon
Lisa and Phil Caton
Tom and Adele Cawley
Milt and Liz Charbonneau
Joyce Copleman
Andrew J. Cosentino
Eve Coulson
Craig and Ellie Deardorff
Renee and Chris Donahy
Erin Enright and Stuart Essig
Allen and Sova Fisher
Mrs. Walter F. Fullam
Bonnie Galloway and Bob Robinson
Mr. and Mrs. Lloyd Gang
Dr. Alexandra Gerry
Eugene Gladston
Jay Gompper
Assemblywoman Linda Greenstein
Peter and Lilian Grosz
Assemblyman Gary L. Guear, Sr.
Patricia Haneline and Alan Kozikowski
Mr. and Mrs. John F. Harper
Ashton and Marion Harvey
Robert F. Hendrickson
Ava and Edward Herbert
Connie O. and James W. Hughes
Libbie and Dave Johnson
Bob and Lynn Johnston
Stephanie Jones and David Starkey
Peter Josten
Sylvia Kay
Leslie and Christopher Kuenne
Leonard Lance
Stephen and Carina Laubach
P. Lawson-Johnston
Mary and Charles Leck
Peter and Marlene Lucchesi
Pam and Roland Machold
Wendy Mager and Eric Monberg
Lisa and Kurt Marttila
Lisa M. Mazzone
Martha and Frank McDougald
Molly McDougald and Dan Auslander
Frances M. Merritt
Jo-Ann and Tim Munoz
Tom and Carol Nied
Nelson Obus
Stephen H. Paneyko
Alex and Howie Powers
David and Margaret Prescott
Lucile S. Proctor
Peter N. Rayner
Marvin and Ingrid Reed

D&R Greenway, Inc.

Board of Trustees

Chair

Charles M. Hartman

First Vice-Chair

Richard S. Goldman, Esq.

Vice-Chairs

Eleanor V. Horne

Edmund Stiles, Ph.D.

Treasurer

Alan M. Hershey

Secretary

Linda J. Mead

Trustees

Rosemary Blair

Thomas J. Cawley

Joyce M. Copleman

Stuart M. Essig, Ph.D.

Fred L. Gaskin

Sophie S. Glover

Ashton Harvey

Robert C. Johnston, Esq.

Mary Alessio Leck, Ph.D.

Cathleen R. Litvack

Thomas A. Moore

Kim Augustus Otis, Esq.

John E. Pallat III

Thomas M. Poole

John Rassweiler, Ph.D.

Megan E. Thomas, Esq.

James W. Trowbridge

Neil Upmeyer

Advisors to the Board

James C. Amon, John F. Harper,

Margaret T. Harper, John D. Mitchell,

Lewis W. Parker III, CPA,

Gregory Romano

D&R Greenway Staff

Executive Director

Linda J. Mead

Land Preservation

Director of Land Preservation and Stewardship

Dennis B. Davidson

Senior Land Preservation Specialist

Bill Rawlyk

Land Preservation Counsel

Kate Buttolph, Esq.

Land Steward

Louise Wilkens

Land Preservation and Stewardship Assistant

Emily Goldman

Development and Outreach

Director of Communications

Jo-Ann C. Munoz

Director of Development

Carol Christofferson

Administration

Director of Internal Operations

Laurie Emde

Administrative Assistant

Nancy Breden

Administrative Assistant

Mary Penney

Office Assistant

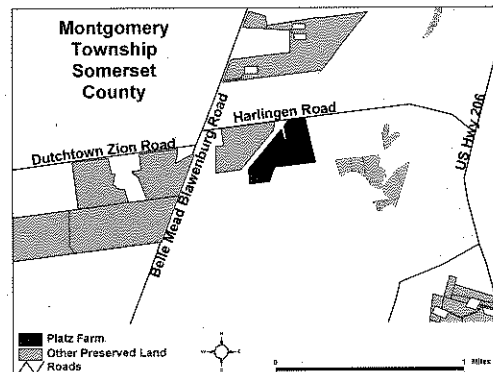
Zac Anglin

D&R Greenway Partners with Montgomery Friends of Open Space, June 2003 The Platz Farm

• Preservation facilitated by D&R Greenway in partnership with Montgomery Friends of Open Space and Montgomery Township

• 39-acre parcel is the second link in the emerging Montgomery Greenway, a connector to the Sourland Greenway

• Case study for Montgomery Friends of Open Space of the tools, techniques, and procedures required for land preservation



Delaware & Raritan Greenway, Inc., is a regional, 501(c)(3) nonprofit land conservancy dedicated to the preservation of open space throughout central New Jersey. Mahlon Lovett, design; Heather Lovett, illustrations. Printed on recycled paper

DELAWARE & RARITAN

GREENWAY

1327 Canal Road
Princeton, New Jersey 08540
(609) 924-4646, Fax (609) 924-5577
Email info@delrargreenway.org

Nonprofit
organization
U.S. postage
PAID
Permit no. 54
Princeton, NJ

Individual Sponsors continued

Philip D. Reed, Jr.
Jay and Amy Regan
Jeanine and Bill Rosen
Holly and Chris Schade
Hal and Janie Shute
Ruth and Elliott Sigal
Todd and Ofelia Silva
Grace and Frank Sinden
Christine and Mark Solomon
Edmund W. Stiles and Michele S. Byers

Mary C. Tanner
Mr. and Mrs. Stowe H. Tattersall
Barbara and Robert Trelstad
Liz and Alexander Wert
Barbara and Peter Westergaard
Mr. and Mrs. Larry D. Wiley
Mr. and Mrs. Thomas R. Wilkinson
Myra and Van Zandt Williams, Jr.
Carol N. Wojciechowicz
Mr. and Mrs. Samuel T. Woodworth
Matthew and Valerie Young

Other Donations Received April 1, 2003 – June 30, 2003

GREENWAY LEADERS (\$10,000 TO \$49,999)

Beneficia Foundation
Mariana T. Berry
Mary Owen Borden Foundation
J. Seward Johnson, Sr. 1963 Charitable
Trust
Gabriella Klein Trust

GREENWAY CONSERVATORS (\$5,000 TO \$9,999)

John & Carrie Pallat

GREENWAY BENEFACTORS (\$2,500 TO \$4,999)

Richard & Cheryl Goldman
Mr. & Mrs. Charles Porter

GREENWAY PARTNERS (\$1,000 TO \$2,499)

David H. & Carol Ann Fulmer

TRIBUTARY DONORS (\$500 TO \$999)

David Ciavarella
Stanley & Marion Cohen
Olivia Cox-Fill & Andrew Love
Kathleen & Michael France
Mr. & Mrs. Bern Gallagher
Fred & Gael Gardner

Sherman & Barbara Gray
Mr. & Mrs. John J. Heins
John & Margaret Kemmerer
Eleanor & John Kuser
Joe & Barbara Marshall
Kenneth & Eileen Miller
William & Leigh Segal
Jean Snyder
Penny & Ted Thomas
Jerome Zeldis & Sharon Stamm

WOODLAND DONORS (\$250 TO \$499)

Rosemary & David Blair
Gordon & Ann Bryant
Peggy & David Dondero
Catherine Drake
Kathi & Kurt Hoffman
John K. Kim & Linda A. Lyu
Arnold & Gabriella Miyamoto
Mr. & Mrs. Ralph F. Peters
Scott & Alexis Weiner
John Weingart & Deborah Spitalnik

TRAIL DONORS (\$150 TO \$249)

Anita & Luis Berrizbeitia
East Amwell Environmental Commission
Michael K. Kennedy

Michelle & Chang-rae Lee
Greg & Anne Elise Matthews
Haveson and Otis
Elisa & Richard Rosen

WILDFLOWER DONORS (\$100 TO \$149)

Patrick & Deborah Agnew
Joleen Benedict
Mr. & Mrs. Leonard Berlik
Helena & Peter Bienstock
Janet M. Christman
Charles & Cindy Clark
Philip Clippinger
Kathleen & Patrick Dwyer
Mr. & Mrs. Francis H. Dyckman, III
Eden Institute Foundation Inc.
Herman & Nancy Espenhorst
Charles Gillispie
Neil & Patti Habig
Mr. & Mrs. Randall Hack
Dr. & Mrs. William Haynes, Jr.
Brian M. Hughes
MaryAnn & Robert Isham
Charles & Daphne Jones
Haig & Carol Kasabach
Les & Linda Koepplin
Joyce & Bill Lathbury
Sharon & Frank Lorenzo
Sandra & Bob More
Kate & Matthew Morgan
Laurie & Jeff Morris
Judy & Oye Olukotun
Kim & Loraine Otis
Frances Preston
Princeton Recreation Department
Richard & Jill Reid
Mr. & Mrs. William H. Reuter
Bill & Maeryn Roebing
Bill & Nancy Schluter
Karin Stanley
Edmund W. Stiles & Michele S. Byers
Hunt & Margaret Stockwell
Jeff Sussman
Judy Teller
Ron Tindall
James & Susan Trowbridge
Gail & Richard Ullman
Harriet & Jay Vawter
Herbert Vollers
Mr. & Mrs. Terrence Wadsworth
Betty & Bill Wolfe
Amy & William Worthington

MAPLE LEAF DONORS (\$50 TO \$99)

Ilonka Angalet
Mikey Azzara
Ellie Swain Ballard
Karen Bannister
Kathleen Bird
Timothy Brill
Leslie Campbell
Mr. & Mrs. Edward M. Crane, Jr.
Al Csapo
Betty & Pat Curtiss
James P. Degnen
Mrs. David Dodge
Verena U. Edwards
Martha Falcone-McLoughlin & Scott
McLoughlin
Charles M. Fisher
Lisa K. Fritzinger



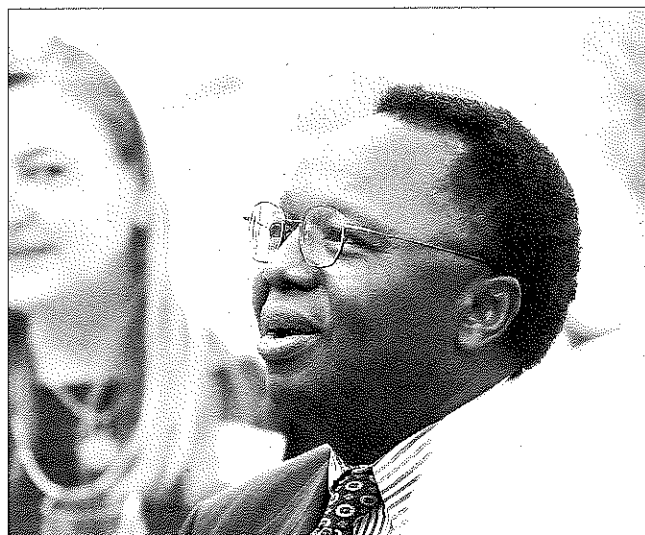
*Land Preservation and Stewardship Assistant Emily Goldman and
First Vice Chair Rich Goldman*

Stefan W. Goff
 Ford & Katherine Graham
 Claudia Hafler
 Eleanor V. Horne
 Nat Howe
 Helen M. Hunt
 Thomas Huntington
 Erik Jetzt
 James M. John
 Mr. & Mrs. Robert C. Johnston
 Mary & Charles Leck
 Marge & George Levine
 Tim Martin
 Maser Consulting P.A.
 Jose Mundassery
 David L. Pasicznyk
 Shari & Warren Powell
 Edward J. Raser
 Josh Raymond
 Regional Planning Partnership
 Hollis Robbins & Michael Rothman
 Kathleen Russo
 Richard S. Snedeker
 Rush Taggart & Dorothy Bedford
 Township of Lawrence
 Regan & Jeff Tudor
 Charles & Letitia Ufford
 Rhonda Utley-Herring
 Brad & Cathy Van Treuren
 Ron Weinstein
 Sylvia C. Weld
 William C. Wowk

FRIENDSHIP DONORS

Luke J. Antonacci
 Suzanne & Donald Brown
 Charles & Gretchen Creesy
 Margaret & Robert Gargiullo
 Cynthia Goldsmith
 Florence K. Gray
 Millie & Jim Harford
 Elizabeth A. Holland & Daniel P. George
 Nancy Howarth

*Hopewell
 landowner
 Oye
 Olukotun*



Stephen Kern
 William Krisak
 William R. Rossmassler & Wendy B. Moore
 Richard K. Shaw
 Linda Siecke
 Township of Plainsboro
 Brian Weeks
 Valerie B. Williams

MEMORIAL GIFTS

In memory of Rex Goreleigh: Verena U. Edwards
 In memory of Evelyn Mercer: Haig & Carol Kasabach
 In memory of Frank Taplin: Mariana T. Berry, Thomas Huntington
 In memory of Lee Tetzeli: Sylvia C. Weld

HONORARY GIFTS

In honor of Bill Swain: Ellie Swain Ballard

MATCHING GIFTS

IBM International Foundation
 Merrill Lynch & Co. Foundation, Inc.
 The J.P. Morgan Chase Foundation

IN-KIND DONATIONS

Acadia Marketing & Desing
 John & Prudence Boulton
 Central Lewmar/PickQuick Papers, Inc.
 Educational Testing Service
 Italian Peoples Bakery & Deli
 Pharos Studios, Inc.

STRATEGY COMMITTEE

Stu Essig, Co-Chair
 Chuck Hartman, Co-chair
 Peter Dawson
 Steve Doerler
 Wendy Kvalheim
 Sharon Lorenzo
 Wade Martin
 Jim Mitchell
 Joseph Mollica
 David Prescott
 Jesse Treu
 Jim Trowbridge

VOLUNTEERS

George & Leona Fluck
 Bill Grun
 Alex Hanson
 Beth Healey
 Andrew Love
 Anne Reeves
 Marguerite d'April Smith
 Mark Solomon, Esq.



D&R Canal Commission Executive Director Jim Amon, D&R Greenway Trustee Bob Johnston and Galas artist Grace Previty Johnston, Marty Davidson and Director of Land Preservation and Stewardship Dennis Davidson

