

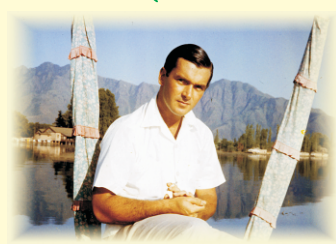


Charles Evans Children's Discovery Trail

Gift of The Charles Evans Foundation

The Charles Evans Children's Discovery Trail is named in memory of Charles Evans (1927-2007).

Mr. Evans was a successful fashion designer and businessman. Founder of the Evan-Picone fashion label, Charles Evans designed women's skirts and pants that became very popular in the 1950s. When Mr. Evans sold the company in 1962, Evan-Picone was one of the best-known names in fashion.



Later in his life, Charles Evans became a movie producer. One of the movies he produced was a funny and popular movie called Tootsie starring Dustin Hoffman and Jessica Lange. It was nominated for 10 Academy Awards, and Jessica Lange won Best Supporting Actress for her role. A place important to Charles Evans was his beach house on New York's Long Island. His house was in between the ocean and the bay. Across from his window was a bird sanctuary where he enjoyed watching and listening to birds. His son, Charles Evans, Jr., and his granddaughter, Charle Lily Evans, live there now.

Linda J. Munson, President of The Charles Evans Foundation, was responsible for the gift of the Charles Evans Children's Discovery Trail. She remembered enjoying nature as a little girl and wanted children to have a special place where they could explore nature and learn to love it, too. As you enjoy this trail today, remember Charles Evans and think about all he did in his life. What will you do?



Linda J. Munson with Charles Evans' granddaughter, Charle Lily and son, Charles, Jr.

"To me a lush carpet of pine needles or spongy grass is more welcome than the most luxurious Persian rug." - Helen Keller (who grew up without sight or hearing)

D&R GREENWAY
LAND TRUST
www.drgreenway.org

About the Trail

Welcome!
This is your trail.

Be an explorer!



How many new things can you discover as you walk along the trail?

Experience
the sights



and sounds
of nature.



Learn about the plants



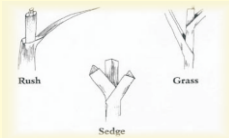
and animals that live here.



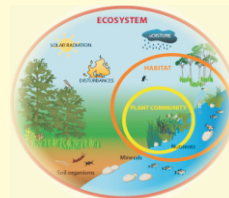
Some people use rhymes to help them remember information.

Here is one used by botanists:

Sedges have edges,
Rushes are round.
Grasses have segments,
Down to the ground.



Find out how everything connects
to everything else in nature.
This is called the Ecosystem.



Take your photo at Halfway Point and post it on D&R Greenway's website.
Tell us what you found and what you like about the trail at www.drgreenway.org.
This trail is Kid-Approved. Special thanks to the Freundlich family, especially Madeleine.

Explore the Trail



Be Safe!



Wear Walking Shoes.

**Bring
Water.**



**Don't Touch
Poison Ivy.**



Check For Ticks



When You Are Done.

The trail changes with every season.

Spring



Summer



Fall



Winter



Come back again!

Visit us at the Johnson Education Center
One Preservation Place, Princeton, NJ
609-924-4646

Scan this code with your
smart phone to go to the
Charles Evans Children's
Discovery Trail homepage.

