

# GREENWAYS

Newsletter of  
D&R Greenway Land Trust  
Volume 33, Number 2  
Fall 2024

Land Preservation Update

Since 1989, D&R Greenway has preserved 329 properties totaling 22,301 acres.  
*Celebrating 35 Years of Connecting ~ People ~ Wildlife ~ Community ~ Land*

## A Treasured Bequest: A Lifetime Speaks of Love for the Land

*Eulogy ~ A poem by Joseph Shannon with reflections by Linda Mead*

*We are the edge of two worlds,  
Harvesting a fallen glory from  
steps and walks.*

Joseph Shannon was a man of many talents. An artist who taught at Columbia. A pianist who played a Steinway made for 19th century composer Edvard Greig. A poet who heard the call of the land.

*Our leaf-rakes scrape the glassy chill.  
We wear unaccustomed parkas, gloves,  
visible breath.*

It is easy to imagine which room in the house was his favorite. Blue, green, purple, red and yellow glassware create a kaleidoscope of color as sun rays reach through a south-facing window. It feels like walking into a rainbow.

*All the familiar footholds are  
deeply camouflaged in  
crimson over orange, russet over  
purple, amber, chartreuse.*

From the living room window, crystal glitters on mirrored glass, reflecting a view of the sky, trees and the Alexauken Creek.

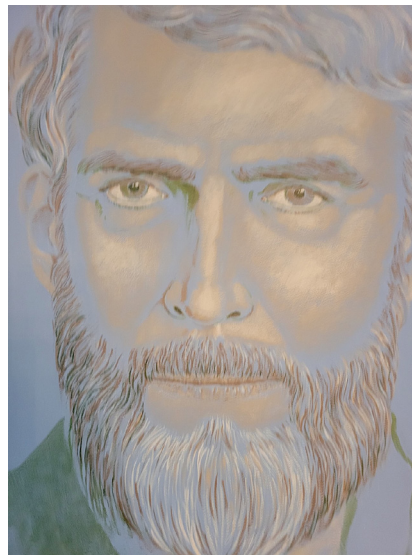
*Just yesterday,  
every tree sang hallelujah  
as gentle wind synchronized  
an arbor chorus  
in flickering, colored light-shows.*

The bridge over the creek was washed away in Hurricane Ida. Simply rebuilt, you picture him looking over the twig-like railing, drinking in the view.

*Now the vainglory has crashed,  
leaving a crunchy carpet of  
fallen swatches.*

*A smoking creek  
looks through bare branches  
for the first time.*

A stone fireplace in the forest contrasts shiny silver, wine glasses,



*Self Portrait, Joseph Shannon*



FOR SALE: Woodland home with stunning views of nature, just 5 minutes from Lambertville. Former home of artist Joseph Shannon. Proceeds benefit D&R Greenway's land preservation and stewardship work. Call Lisa Theodore for a showing at Compass Real Estate, 908-872-1840.

Proudly reaccruited in 2023!  
Excellence.Trust. Permanence.



### Inside

- A Legacy of Partnership
- The River Runs Through Us
- The Awakening Sculpture at St. Michaels Farm Preserve Inspires Visitors
- Scenes from the 1778 Reenactment at Hillside Farm
- Join us for a Legacy Estate Sale December 15, 1–5 p.m.
- When the Land Calls Art Exhibit

candlesticks and music that speak of dinner parties with friends who laughed together in this special place. Once, working in New York, Joseph designed an album cover for the great opera singer Maria Callas. You wonder if the stereos throughout the house were synchronized, filling the space with its own concert, singing louder than the birds overhead.

*Geese fly nightly,  
barking companionship on their  
long retreat.*

The art studio holds lifetime treasures. Photos on the wall tell of ancestors, a beloved pet poodle, friends and family held close. A sister's fashionable portrait leads to discovery of his sibling's career in fashion illustration, with 1960s-era drawings of a ruffled vest and "mod" clothes.

In a large case sit photos and sketches that can be traced to landscape paintings on the walls, revealing the process of creation. A series of flowers, a woodland series. Pen and ink  
*Continued on page 2*

## Joseph Shannon

*Continued from page 1*

drawings of a rocky shoreline and colorful scenes of fanciful architecture share places visited, near and far. A red barn, a lake, mountains, tall trees, colored skies look out from paintings just as the artist looked out the window at his woodlands, no other house in sight.

*Left over from summer,  
a lone dragonfly pirouettes  
in the icy brilliance of late afternoon.  
He traps a dying sun  
in cellophane wings.  
Is the happy stunt-pilot aware of  
this dissolving world?  
Shouldn't he be counting down?*

Inching closer to the infinite, you can feel that the places, people and experiences that provided joy and comfort became even more cherished.

*No. He's celebrating an instant  
borrowed from the hundred-million  
years of the earth.*

Joseph Shannon gave a remarkable gift to D&R Greenway this spring, just as new life blossomed on the Earth. Through his land, his art, and all that speaks of the things he valued, he has left us with his legacy.

Joseph Shannon's words, carefully crafted in his bequest:

**"In recognition of the outstanding accomplishments of D&R Greenway in preserving the health and beauty of the landscape of New Jersey, I donate my beloved home and contents therein to them... Included with this gift**



*A sparkling view of nature from the living room window*



*Alexauken Creek on the Shannon property*

**are a large and diverse art collection, furnishings by international designers Saarineen, Nelson, Eames, and a Steinway grand piano of the Norwegian composer Edvard Grieg. I request that the forest surrounding my house, and the Alexauken Creek that flows through my property, be preserved in their own natural beauty forever."**

Being entrusted with the immense legacy of a lifetime is a great honor. The land and house that Joseph loved will be preserved and sold, allowing a new owner the opportunity to live in the woods, listen to birdsong and grow a love for the land.

The hundreds of pieces of artwork that Joseph left us will be featured in numerous exhibits yet to come. Mid-century furniture and lamps, drafting tables and desks, art tools, and a collection of art books will be offered at a "garage sale" next spring.

Over the holidays, we will pass along Joseph's love of land and beautiful things as we offer selections from his glass, pottery, art and music collections at a legacy sale. All proceeds will fuel the mission of D&R Greenway: to preserve and care for land, and inspire a conservation ethic, now and forever.

Support provided by Joseph Shannon will live on in new lands preserved, and through people inspired by his generous spirit and love of land. His is a gift that truly keeps on giving.

Each of us makes a statement about our values and beliefs by how we live our lives and what we leave behind. If your values align with D&R Greenway's mission, you too can create a legacy that will keep on giving. Land and all its benefits last forever when we respect the land as a part of ourselves and pass it on. 🌿

To discuss your own legacy wishes, contact D&R Greenway President and CEO Linda Mead at [lmead@drgreenway.org](mailto:lmead@drgreenway.org), or Director of Donor Engagement Nancy Faherty at [nfaherty@drgreenway.org](mailto:nfaherty@drgreenway.org), or call us at 609-924-4646.

*Those interested in purchasing furnishings by international designers Saarineen, Nelson, Eames, and the Steinway grand piano are requested to call 609-924-4646 or write to [info@drgreenway.org](mailto:info@drgreenway.org) for an appointment.*

## Regional Connections:

# Partners Monmouth Conservation Foundation and NJ Audubon Join with D&R Greenway to Save Land

Most of D&R Greenway's work takes place in central New Jersey. By connecting green swaths of land, and adding to our signature preserves, we make a big impact.

Sometimes, strategically reaching beyond our core area allows us to expand our effect. Using expertise gained over 35 years of leading hundreds of land preservation transactions, we share what we've learned to help communities and sister land trusts accomplish their goals. That was the case when Monmouth Conservation Foundation (MCF) asked us to join with them to solve a land ownership dilemma.

The Scudder Preserve is slated to become MCF's new headquarters. A 91-acre property with a creek, pond, trails, grasslands, and hills, the preserve was partly donated to NJ Audubon in 2007 by Elizabeth and Richard Scudder. The remainder of the property was donated in 2012 through Richard's will. Richard Scudder was a newspaper publisher and an avid outdoorsman who

served on the board of the Princeton Environmental Institute.

When D&R Greenway opened the Johnson Education Center in 2006, Professor Stephen Pacala, Ph.D., of the Princeton Environmental Institute, was among the early lecturers. Sharing a pie chart that illustrates how many actions taken together can mitigate climate change, he ended by advocating for land preservation as an important part of the solution.

Monmouth Conservation Foundation has a decades long history with the Scudder Preserve. The organization has a similar mission to D&R Greenway Land Trust. They were the recipients of conservation easements on the Scudder property, donated by the former owners, on the land was subsequently gifted to NJ Audubon.

When MCF was offered the opportunity to acquire the property for perpetual stewardship, a legal merger would have joined the deed and the easement together, eliminating the conservation easement already in place. This is where D&R Greenway stepped in.

The solution—to avoid merger and keep the conservation easement intact—was this: D&R Greenway became a legal co-owner of the conservation easement, allowing the deed to be transferred by NJ Audubon to MCF while still protecting the natural resources and open space. We will join in annual easement monitoring and ensure the conservation values remain.

Visiting the property on a beautiful day, you can see why it's the perfect place to bring people together to inspire conservation. Just as D&R Greenway welcomes visitors to its Johnson Education Center surrounded by Greenway Meadows park, preserved in 2001, the Scudder Preserve contains a building that will become the new home of MCF, with trails and natural areas that can be enjoyed by the public.

This is the first preserve that Monmouth Conservation Foundation owns outright. The new headquarters property will provide them a space to hold educational and promotional events. D&R Greenway is proud to help our partner organizations any way that we can, especially if it serves our combined mission of preserving New Jersey's beautiful open space. 🌿



*D&R Greenway holds a conservation easement on Monmouth Conservation Foundation's Scudder Preserve.*

## A Blacks Creek Paddle

By Susan Charkes

Early on a Sunday morning in August, sun streamed through stands of wild rice along the banks of Blacks Creek, the grains sparkling like diamonds. A throng of red-winged blackbirds descended to feast on the rice, excitedly cackling about their good fortune, while a raft of kayakers chattered with equal delight about our own good fortune to experience this magic moment.

The fifteen of us were exploring Blacks Creek on a D&R Greenway paddle. We had begun the journey at Bordentown Beach, the waterfront park in Bordentown City. Here Blacks Creek joins the Delaware, as does Crosswicks Creek (gateway to the Abbott Marshlands) and the Delaware & Raritan Canal.

Our group included Watershed Ambassador Doressa Williams, and Kayak Program Manager Lisa Bruno, plus special guest Rick Van Noy. A Titusville native and author of *Borne by the River*, Rick's 2024 book tells his journey of canoeing the Delaware from Hancock to Trenton with his dog Sully.

We headed upstream at slack tide (before high tide goes out); it felt like paddling a still pond more than a flowing waterway. Past steep banks lined with trees, we reached a railroad bridge. Underneath it we saw two spans: the active freight line to Perth Amboy, and the newer track for the River Line light rail, whose gleaming white cars we spotted during our paddle. Doreen pointed out that waterways like Blacks Creek served as analogous transportation corridors for the indigenous Lenape.

Past the bridge, highway noise faded. Above us was Bordentown City's Lime Kiln Park, created by D&R Greenway and the City in 2013 with half a dozen preservation transactions. To our right was a broad freshwater tidal marsh, carpeted with nine-foot tall wild rice, in its summer glory with feathery tops crowning a threaded necklace of rice grains. At the creek edges were aquatic flowering plants sporting a rainbow of colors: spatterdock (yellow), jewelweed (orange), saggittaria (white),



*Looking for bald eagles on the kayak trip with Rick Van Noy. D&R Greenway's Kayak Program Coordinator Lisa Bruno shares, "Our kayak trips bring great excitement while having fun and bonding together to experience nature."*

and pickerelweed (purple). Sycamore, silver maple, box elder and green ash trees along the shore provided perches for songbirds like wrens and goldfinches. A mallard burst from cover and flew overhead. We scanned the sky periodically for bald eagles—this marsh, with its broad channel and adjacent forest, is an eagle foraging area—but none were cooperating this morning.

Rick shared his experience with bald eagles along the Delaware. He saw many of the majestic birds—yet still found each sighting remarkable, all the more so because J. Wallace Hoff's account of his 1892 river trip—which partly inspired Rick's book—did not mention eagles at all. Logging had destroyed nesting habitat and pollution had depleted the fish. Rick's book celebrates the Delaware's rebirth as a healthy habitat for wildlife and humans.

Our creek journey was in many ways a literary one. Rick, a professor of English at Radford University, weaves many writers into his book, including Thoreau, Burroughs and

McPhee, easily quoting passages while we paddled. Doressa brought Charles Conrad Abbott into our floating book discussion, observing that he writes about birds, wildlife, even trees, as if they were communicating directly to him.

A pocket of low grey clouds raced overhead, spattering raindrops. Fortune smiled upon us and the rainclouds skittered away as we made the turn for home. Re-gaining our land legs, we headed to nearby Point Breeze, preserved by D&R Greenway in 2020. There, at its Discovery Center, we enjoyed a lively talk on Joseph Bonaparte, who lived here from 1816–1839.

Rick capped the day by sharing some final observations from his trip. A recurring theme is how ordinary folks act for the river, from organizing opposition to the Tocks Island dam, to organizing annual cleanups. Reflecting on his Titusville upbringing, much of which was spent on the water, he writes, "I knew I was on the side of the river—literally." 🍀

## Volunteer Opportunities at the Discovery Center at Point Breeze

Seeking educational tour guides (docents) for two-hour shifts on weekends to welcome our guests and discover our amazing history together! Guide volunteers should be 18+ years old and available Saturday/Sunday, noon–2 p.m. or 2–4 p.m. 🐾

ptbreezemanager@drgreenway.org



101 East Park Street  
Bordentown, NJ

Join us February 22 at 2 p.m.  
“Picturesque Point Breeze” with Rebecca Flemer



## D&R Greenway Receives Inaugural Partner Award

Friends of Hopewell Valley Open Space (FoHVOS) recognized D&R Greenway with its inaugural Partner Award in September 2024.

Celebrating many years of partnering to protect thousands of acres of land, including the popular Woosamonsa Ridge Preserve, are retired FoHVOS leader (l) Lisa Wolff, FoHVOS Vice President and Hopewell Borough Mayor Ryan Kennedy, Mercer County Executive Dan Benson, FoHVOS Executive Director Jenn Rogers, D&R Greenway’s Linda Mead, Hopewell Twp. Committee member Uma Purandare, Hopewell Borough Council member Samara McAuliffe, and Rick Lear of D&R Greenway. 🐾

“[create] a world that is not only sustainable, functional and equitable, but also deeply desirable...”

“Water is our lifeblood.”—Richard McNutt of Bucks County, PA, was a lifelong advocate for protection of the Delaware River. His famous red Del-AWARE jumpsuit



is on display at Point Breeze, alongside a dreamcatcher representing his indigenous heritage that inspired him to protect the Delaware for “seven generations.”

Richard’s philosophy: “How to bring into being a world that is not only sustainable, functional and equitable, but also deeply desirable. It’s a question of leadership, ethics, vision and

courage—properties not of computer models but of the human heart and soul.”

A carving by Jane Walkingstick Roop, representing his life commitment, can also be seen at the Discovery Center at Point Breeze. 🐾



## Alliance for Watershed Education Annual Fellowship Program

Our AWE-SOME Fellows (l) Dan Kapner and Mike Sherr presented projects on protecting the cultural and environmental resources of the Delaware River to the Alliance for Watershed Education consortium of 23 nature centers.

This annual Fellowship program engages young people to inspire careers in conservation. Dan created a video with interviews of our Lenape partners at the Discovery Center at Point Breeze. Mike wrote stories for our next TravelStorys walking tour at Point Breeze, available soon. 🐾

# “The Awakening” at St. Michaels Farm Preserve Impacts and Inspires Visitors

A giant sculpture by Seward Johnson will continue on public display through Fall of 2025. The public art, in collaboration with the Johnson Atelier, the Hopewell Valley Arts Council, and the Atlantic Foundation, a Johnson Family foundation, draws visitors from the greater region and around the world.

Funding from The Atlantic Foundation enabled D&R Greenway to establish a native wildflower meadow surrounding the sculpture. The meadow enhances the value to pollinators by extending the Phyllis Marchand Wildflower Meadow.

“We are thrilled to see people experience this outdoor art as they are introduced to our preserve,” says Linda Mead. “It is by engaging people’s hearts and minds—and sense of fun—that we reach to the sky in meeting our mission.”

Responses to the Hopewell Valley Art Council’s photo contest and on Google:

“My dad has never been to this country before. It has been almost 23 years that I have lived here, and I



Suzanne Vaucher (The Vaucher Revolutionary Preserve at Steele’s Gap) with Donna Lazartic, in awe at the “Awakening”

wanted to show him our town. I could not think of another way than to bring him to *The Awakening*, which he loved very much.” —Maria Laura

“Worth a quick trip to see the giant emerging from the earth! Families

with kids will enjoy easy access from the nearby free parking lot. There are trails through old fields for those who want to stretch their legs, and a coffee or lunch are a short drive around the corner.” —Paul Matzo 🍂

## Reenactment and Filming at Hillside Farm Highlights D&R Greenway’s Fall Fundraiser

The former Betty Wold Johnson property, Hillside Farm, was the setting for reenactment of a historical encampment that took place on that very ground June 23–25, 1778.

The NJ Fife and Drum Corp and the New Jersey Grays, representing the 3rd Regiment of the Continental Army, led colonial-clothed attendees on a march to commemorate the event.

A grant from the Mercer County Cultural and Heritage Commission funded the making of a short film about this crucial gathering, just three days prior to the 1778 Battle of Monmouth. Stay tuned for the red carpet premiere of the film. 🍂



New Jersey Fifes and Drums and the Town Crier led a march to the reenactment site. (photos by Philip S. Getty and Mary M. Michaels)

# Estate Sale, Legacy Collections of Joseph Shannon

## *Features Glass, Pottery, Art and Music of Lambertville Artist*

### Special Sneak Preview:

*Thursday, December 12, 3 p.m. – 6 p.m.*

*\$5 per person. RSVP required; visit [drgreenway.org](http://drgreenway.org)*

Help us celebrate the season — and the land — in an unforgettable holiday shopping experience.

Enjoy collectible signed pottery, colorful art glass and a selection of remarkable artwork by local artist Joseph Shannon who generously bequeathed his estate collections to D&R Greenway.

Make your holiday shopping meaningful by knowing that your entire purchase supports the work of D&R Greenway to preserve and protect land. 🌿



**Join us December 15th for an Estate Sale and Art Opening 1–5 p.m., Artist Talk 2 p.m.**

Bring your holiday vinyl record for DJ Dan to play on Joseph’s vintage turntable while you enjoy refreshments! Johnson Education Center, 1 Preservation Place, Princeton, NJ

## *When the Land Calls*

# An Art Exhibit Featuring Jewelry and Sculpture

*Exhibit open through February 2025*

*Guest Curator David Scott Lawson*

**L**and calls to those who listen. When Plainsboro resident Yvonne Amalina De Carolis was recovering from a lengthy illness, the land’s healing voice called her with a clear vision. One person’s will, determination, and passion for uniting the beauty of our natural world with art led Yvonne to our featured artists, Ellen Rebarber and Mike Benevenia.

In her ninth decade, Ellen presents a lifetime legacy of work with her decorative glass pieces, delicate paper bowls, and fused glass jewelry. She teaches and makes art at her Highland Park studio.



*Ellen Rebarber, “Circle of Life”*



*Mike Benevenia, “Double Trouble”*

Mike was a recipient of a Fulbright-Nehru research fellowship in 2019. His work uses a wide range of materials, including steel, fiberglass, wood, and found objects. His art pushes physical limits, addressing the duality of fragility and resilience.

**All art sales support land preservation and stewardship. 🌿**

One Preservation Place  
Princeton, New Jersey 08540  
Tel 609-924-4646  
info@drgreenway.org  
www.drgreenway.org

Nonprofit Org  
U.S. postage  
PAID  
Princeton, NJ  
Permit #47

## D&R Greenway Land Trust, Inc.

D&R Greenway Land Trust is a regional 501(c)(3) nonprofit land conservancy dedicated to preserving and caring for land and inspiring a conservation ethic, now and forever.

### Board of Trustees

*Co-Chairs*

Michael Kunst  
Jeanne Perantoni

*Vice Chairs*

Adrian Huns  
Diana Moore

*Treasurer*

Dan Motto

*Secretary*

Heather McCusker, Esq.

*Assistant Secretary*

Michael Bramnick

*Trustees*

Lisa Butler, Esq.  
Peter Carril, Jr.  
James Fiorentino  
Johan Firmenich  
Jack Gallagher  
Jeffrey Gradone, Esq.  
Kenneth K. Guilmartin

Wendy Kvalheim  
James Lynch, Jr.  
William C. Martin  
Patrick L. McDonnell  
Linda J. Mead\*  
Laura Napoli  
Jim Waskovich  
\* President & CEO



*In Memoriam*

Phyllis L. Marchand  
Chair 2016–2018

Brian H. Breuel  
Chair 2014–2016

Charles M. Hartman  
Chair 2002–2004

Neil Upmeyer  
Chair 1998–2001

### D&R Greenway Staff

*President & CEO*

Linda J. Mead

*Executive Assistant to the President & CEO*

Deb Kilmer

*Senior Director of Land Protection and Planning*

Rick Lear

*Financial Manager*

Ann Zawartkay, CPA,  
CGMA, Non-Profit  
Accounting Solutions, LLC

*Bookkeeper*

Valarie Bay

*Land Stewardship Team*

*Director of Land Stewardship*  
Tina Notas

*Site Manager, St. Michaels*

*Farm Preserve*  
Dave Smithers

*Land Stewards*

Dan Kapner  
Carley Lebowitz

*Seasonal Land Steward*

Luke Annand

*Facilities*

Bob Novobilsky

*Landscaping*

Sowsian's Landscapes  
Sunny Garden

*Community Conservation Team*

*Director of Donor and Community Engagement*  
Nancy Faherty

*Education and Outreach*

Susan Charke  
Sharon Fink  
A. Thomas

*Public Management, Discovery Center at Point Breeze*

Melanie Mead, M.Ed.

*Head Gardener,*

*Historic Garden at Point Breeze*

Brooke McMinn

*Manager, Kayak Program*

Lisa Bruno

*Summer Fellows*

Savannah Alizio

Mike Sherr

*Founder, Decoy Collection*

Jay Vawter

*Newsletter Design*

Mahlon Lovett

"Land Trust Accreditation Commission" and the Accreditation Seal are trademarks owned by the Land Trust Accreditation Commission and are used under license. Printed on recycled paper.



❄️  
With Gratitude,  
D&R Greenway Wishes  
You Peace and Joy  
This Holiday Season  
❄️

Princeton Public Library  
partnered with D&R Greenway  
to showcase native planters on  
Hinds Plaza. Enjoy the holiday  
colors with 'Fire Alarm'  
coral bells and 'Snow Flurry'  
white heath aster.

